

ultracraft®

REALITIES





Evanston door style in Oak with Platinum Grey stain.

Realities

Kitchens.....	4-63
Baths.....	64-85
Living Spaces	86-95
Accessories.....	96-103

In an era when people are focused on creating great experiences and lasting values for themselves and their families, UltraCraft delivers.

Our cabinetry is more than a place to store things, and more than a personal expression of the look you love. We create homes, family hubs, and community.

Kitchens with islands and extended counters respect your choice to order home delivery, power up for homework, or spend time with friends. Bathrooms with charging drawers and makeup vanities keep you decluttered and comfortable. Living spaces with entertainment units become social centers, and offices with bookshelves become orderly retreats that will even impress your virtual assistant.

Our cabinetry provides a great experience and lasting value. Discuss your wants and needs with your UltraCraft designer and before you know it, your dream of the perfect space has become a reality.



Plainview Wide door style with Rag & Bone paint. Designer: Tres Jolie Maison. Photo: Kim Smith Photo.

Kitchens

You do a lot in your kitchen—cook, clean, go through your mail, charge your mobile devices, entertain. It's got to function, and you need to enjoy your time there. UltraCraft cabinetry makes that a reality.

Work with your UltraCraft designer to define what you like, visually. White or neutral cabinets, open shelving, and oversized dining islands are ever-popular. Or you can go ultra-sleek with high gloss cabinetry, stainless hardware, and a few glass doors. Contemporary cottage, simply streamlined, modern metro or something yet undefined and only you—UltraCraft gets you there.

Designing the perfect kitchen doesn't stop once you've selected door styles and colors. Your kitchen should be customized to your lifestyle.

Would a sink or stove built into your island help make you more efficient? Would base cabinets with drawers give you easier access to cookware? Need appliance garages to hide your compost bin or Instant Pot®?

There are endless options and combinations of door styles, colors, finishes and accessories your UltraCraft designer can bring together to accommodate your life and style.

Mount Vernon door style in Cherry with Chestnut stain. Designer: Kitchen & Bath Design + Construction Design Team. Photo: Chipper Hatter.



Andover door style with Arctic White paint and Brown Linen glaze. Designer: Samina Datta, Reico Kitchen & Bath. Photo: BTW Images, LLC.





Stickley door style in Rustic Alder with Natural stain and Lakeway door style in Blue Ash paint.



Adriatic door style in Horizontal Dark Ebony Thermofoil and South Beach door style in Pure White UltraLux. Designer: Dan Smith, Kitchens by Ambiance, Photo: LDR Photography.

Greco door style in Satin White Thermofoil and Fairlawn door style in Cherry with Bordeaux stain and Brown glaze. Designer: Kitchen & Bath Design + Construction Design Team. Photo: Chrissy Racho.



Breckenridge door style in Arctic White paint. Designer: Katherine Dashiell, Reico Kitchen & Bath. Photo: BTW Images, LLC.





Plainview door style in Cherry with Wenge stain Low Sheen and Slab door style in Bamboo Vertical Deluxe Veneer with Coastal Grey stain.



Charlotte door style with Malted Brie.
Designer: Jenny Roush Newman, West
End Cabinet Company. Photo: J. Sinclair
Photography.



Crystal Lake door style in Lunar Gray paint with Nickel Linen glaze. Designer: Terry Peacock, Peacock Cabinetry.



Sagamore door style in Beach White and Stone paint. Designer: Tina Rodda, Kitchen Cove Cabinetry and Design.



Daytona door style in Maple with Melted Brie and Custom Paint (Benjamin Moore Color #1680 Hudson Bay), Low Sheen. Designer: Debbie Davis, CMKBD, CAPS, Kitchens by Wedgewood. Photo: Virtuance.com.





Sarasota door style in Stone paint with Brown Linen glaze and in Cherry with Porcini stain with Brown glaze. Designer: Carina Stephenson, Sr. Design Consultant at Design Studio by Raymond; Architectural & Building Services provided by KTS Group.



Shaker door style with Rag & Bone paint.
Designer: Jenny Roush Newman, West
End Cabinet Company. Photo: J. Sinclair
Photography.



Shaker door style in Melted Brie paint and Frisco door style in Cherry with Coastal Grey stain.
Designer: Jessica Fabbri, Showcase Kitchens.
Photo: Kyle Adams Photography.

Lakeway door style in Maple with Lunar Gray paint and Cocoa stain, Low Sheen; Broadline Stainless Steel with Clarion Glass; and Piper door style in Kona Horizontal Textured Melamine. Philadelphia Design Home. Photo: Jay Greene Photography.





Shaker door style in Melted Brie paint.
Designer: Kitchen & Bath Design +
Construction Design Team. Photo:
Chrissy Racho.



Piper door style in Charred Vertical and Archicrete Textured Melamine and Finline Aluminum door style with Black Etch Tech Glass inserts.



Kitty Hawk door style in Rift White Pine
Textured Melamine and Chesapeake door
style in Mineral Grey paint.

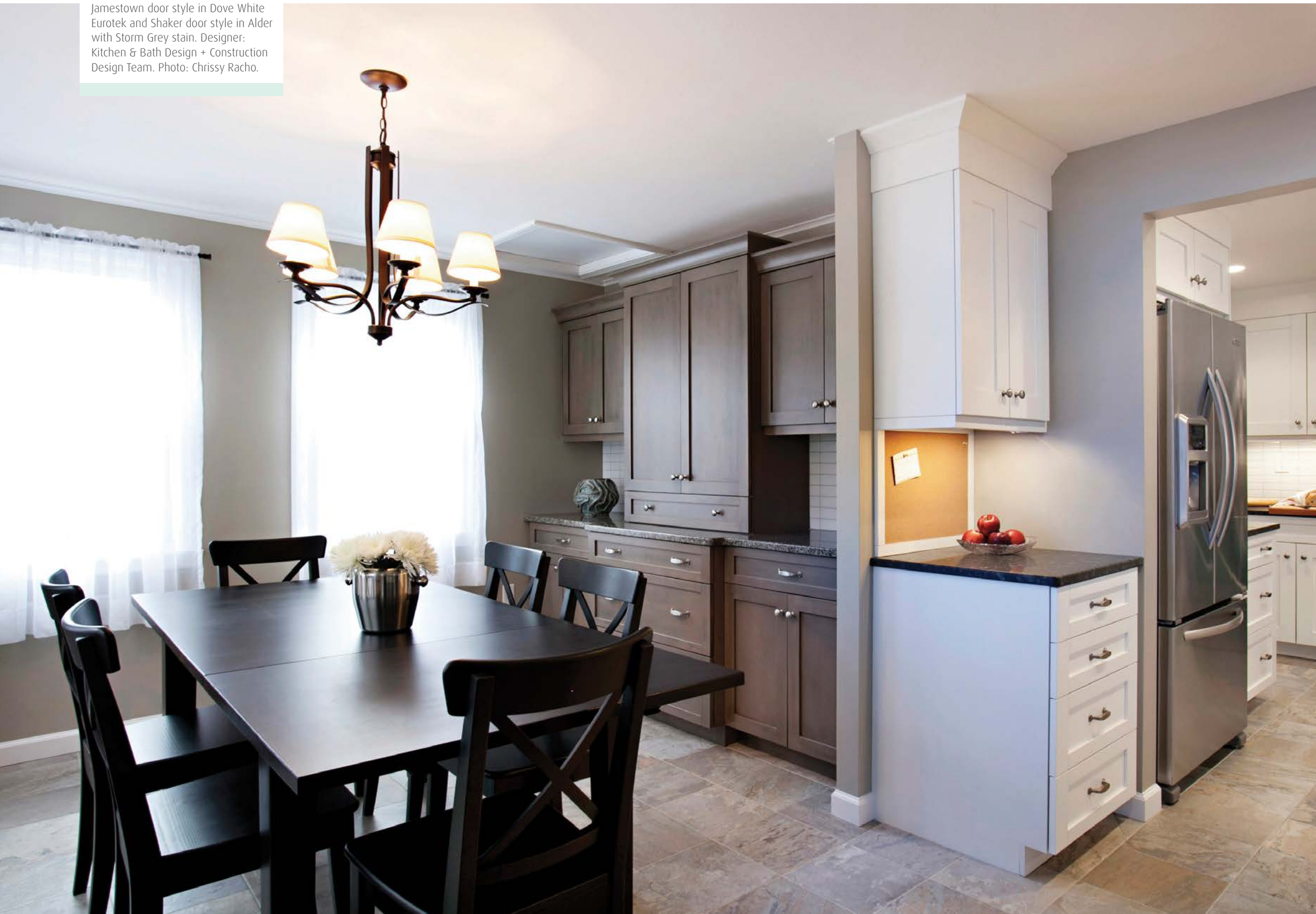


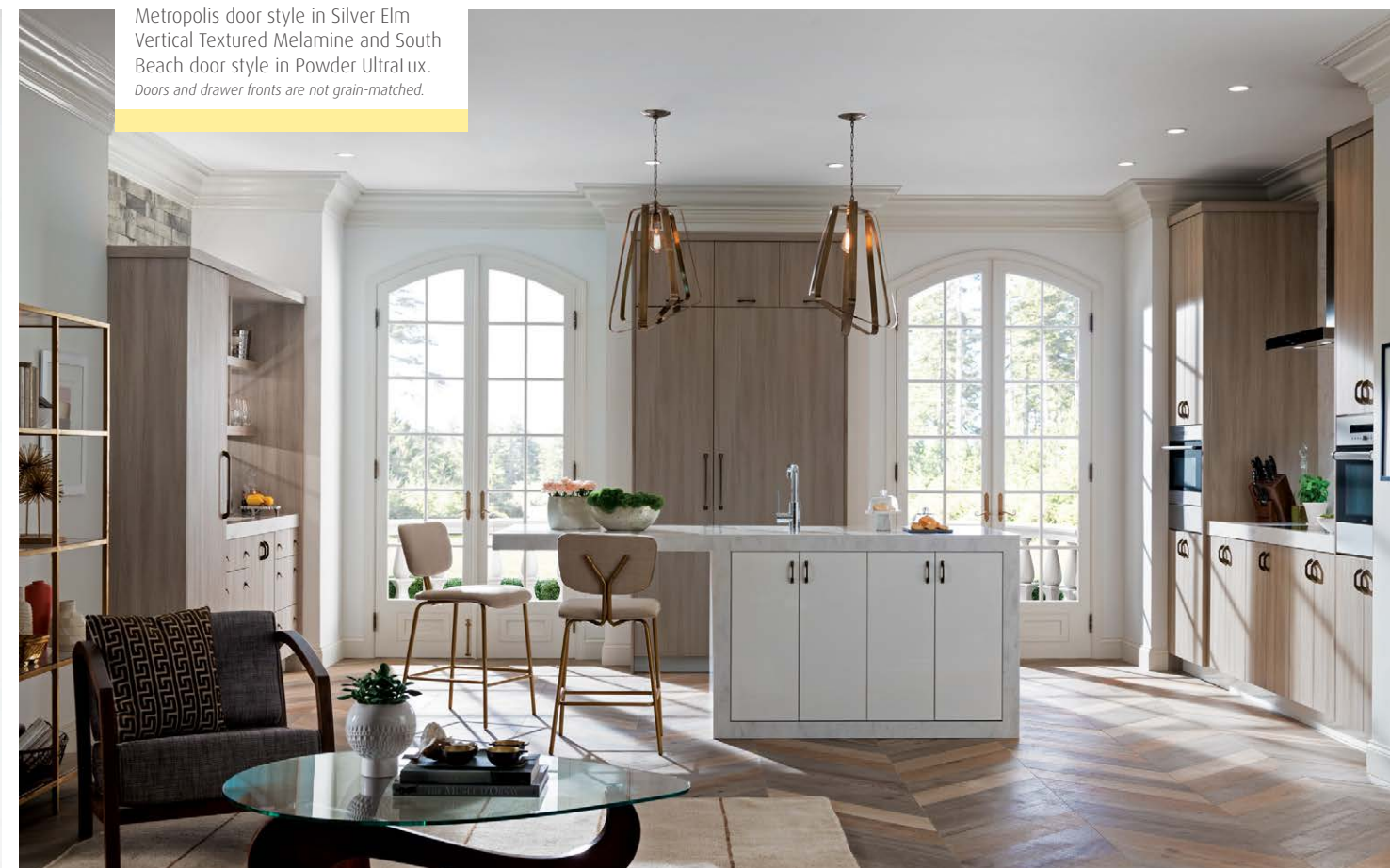
Kitty Hawk door style in Wired Silver Textured Melamine.

Breckenridge door style with Melted Brie paint. Designer: Jenny Roush Newman, West End Cabinet Company. Photo: J. Sinclair Photography.



Jamestown door style in Dove White Eurotek and Shaker door style in Alder with Storm Grey stain. Designer: Kitchen & Bath Design + Construction Design Team. Photo: Chrissy Racho.





Metropolis door style in Silver Elm
Vertical Textured Melamine and South
Beach door style in Powder UltraLux.
Doors and drawer fronts are not grain-matched.





Adriatic, Gloss White. Designed by Elizabeth Aurandt for mercerINTERIOR. Photographed by Emily Gilbert.





Piper door style in Kona Vertical Textured Melamine and Oakland Park door style in Melted Brie paint.



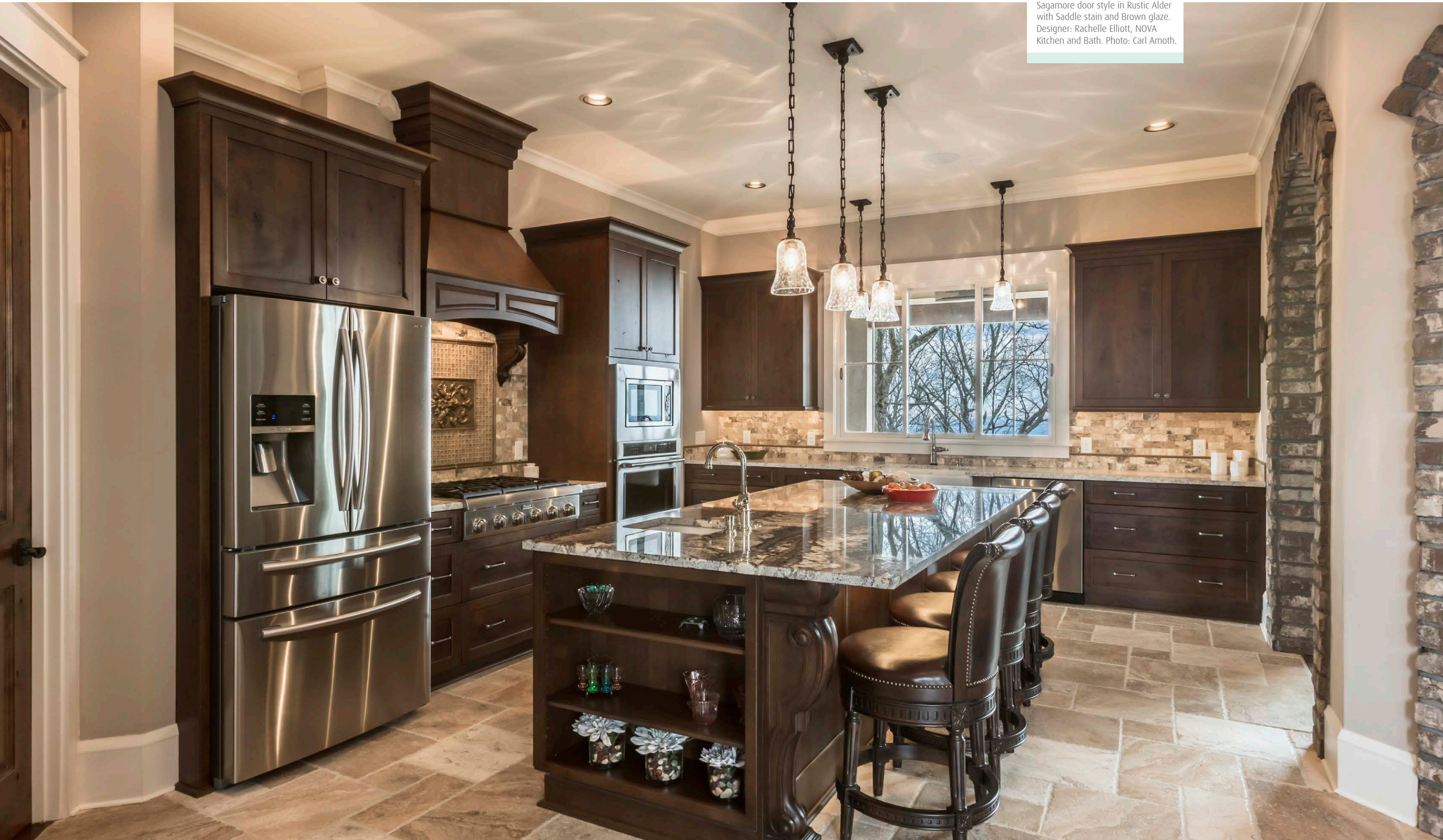
Lafayette door style in Rag & Bone paint and Slab door style in Bamboo Vertical Deluxe Veneer with Coastal Grey stain.



Piper door style in Kona Vertical Textured Melamine and South Beach door style in Linear Bronze UltraLux. The New American Home, Las Vegas, NV.

Frisco door style in Arctic White paint and Plymouth door style in Cherry with Chestnut stain and Brown glaze. Photo: Moondog Photography.





Sagamore door style in Rustic Alder with Saddle stain and Brown glaze.
Designer: Rachele Elliott, NOVA
Kitchen and Bath. Photo: Carl Amoth.

Piper door style in Kona Vertical Textured Melamine. The New American Home, Las Vegas, NV.



Baths

What's more important than self-care? Nothing, so let's create a bathroom that indulges you, emotionally and functionally. A comfortable place to go.

How do you want to feel in your retreat? Relaxed, organized, expansive, elegant, like a guest in a five-star hotel? Talk to your UltraCraft designer about the door styles you like and then move on to colors, finishes, and hardware until you find the combination that excites you.

Don't limit your thinking to just sink vanity cabinets. You may like tall cabinets with clothes hampers, wardrobe cabinets and countertop hutches, designed to keep your space organized and tidy. Display towels or art in open cabinets and store toiletries in drawers. Need a place to put on makeup and do your hair? Medicine hideaway? Bench seating? That, and much more, is all do-able.

Think about what you want, think about what you need, then be guided to the reality of a bathroom beyond any you've ever experienced.



Stickley door style in Arctic White paint.



Adriatic door style in Shark Thermofoil.
Designer: Jorge A. Martinez, CKD,
Designer Kitchens LA.





Adriatic door style in Dark Ebony Horizontal Thermofoil. Designer: Heather Jasper, Powell Construction Services. Photo: Clarence Sormin.

Acrilux II door style in Linear Bronze UltraLux. Designer: Joe Combest, Combest Cabinets. Photo: Michelle Anderson, Pinkle Toes Photography.



Slab door style in Bamboo Vertical Deluxe Veneer with Natural stain.
Designer: Jorge A. Martinez, CKD,
Designer Kitchens LA.





Sagamore door style in Rustic Alder with Saddle stain and Brown glaze. Designer: Rachelle Elliott, NOVA Kitchen & Bath. Photo: Carl Amoth.



Hampton door style in Eggshell. Designer: Heather Jasper, Powell Construction Services. Photo: Clarence Sormin.

Englewood door style in Cherry with
Peppercorn stain. Designer: Debbie
Davis, CMKBD, CAPS, Kitchens by
Wedgewood. Photo: Virtulance.com.





Avon door style in Arctic White paint.



Carnegie door style in Cherry with Amber stain and Brown glaze. Designer: Blake Howell, Allied ASID and Bette Raburn, ASID, The Works. Photo: Joel Silverman.

Mount Vernon door style in Cherry with Chestnut stain. Designer: Kitchen & Bath Design + Construction Design Team.





Shaker door style in Urban Gray paint.
Designer: Angela Goodall, Kitchen
Choreography. Photo: Jason Hulet.

Living Spaces

UltraCraft cabinetry doesn't just belong in your kitchen or bath. It belongs everywhere you need storage. Where else are you going to put all that stuff?

Cabinetry, hutches, and shelving in your living room and den give you options for storage and display and can help define spaces and traffic flow. UltraCraft cabinetry can be designed to look like furniture, complement your home décor, or to have a character all its own.

As home offices trend upwards, UltraCraft base cabinets, wall cabinets, desk areas, bookcases and more, are being designed into custom spaces with intention and purpose to support your work needs.

Dreaming of a picture-perfect laundry room? The reality is that cabinets, shelves, drawers, cubbies, hampers, and counters help you work efficiently while minimizing clutter. Same for your pantry or mudroom. No more chaos!

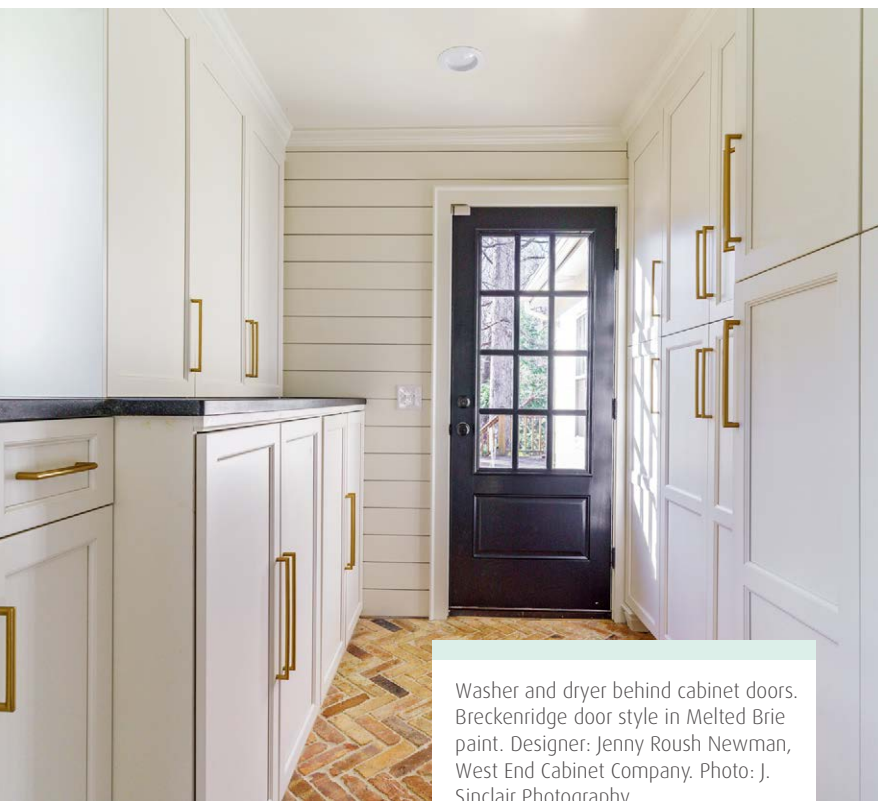
Every room can benefit from cabinetry—kids' rooms, closets, rec rooms, sunrooms, bonus rooms. Discuss your needs with your UltraCraft designer. You'll be amazed at the solutions presented.

Metropolis door style with Argent Oak Vertical Textured Melamine. Designer: Danielle Melchione, CKD, Reico Kitchen & Bath. Photo: BTW Images, LLC.





Shaker door style in Urban Gray paint. Designer: Angela Goodall, Kitchen Choreography. Photo: Jason Hulet.



Washer and dryer behind cabinet doors. Breckenridge door style in Melted Brie paint. Designer: Jenny Roush Newman, West End Cabinet Company. Photo: J. Sinclair Photography.



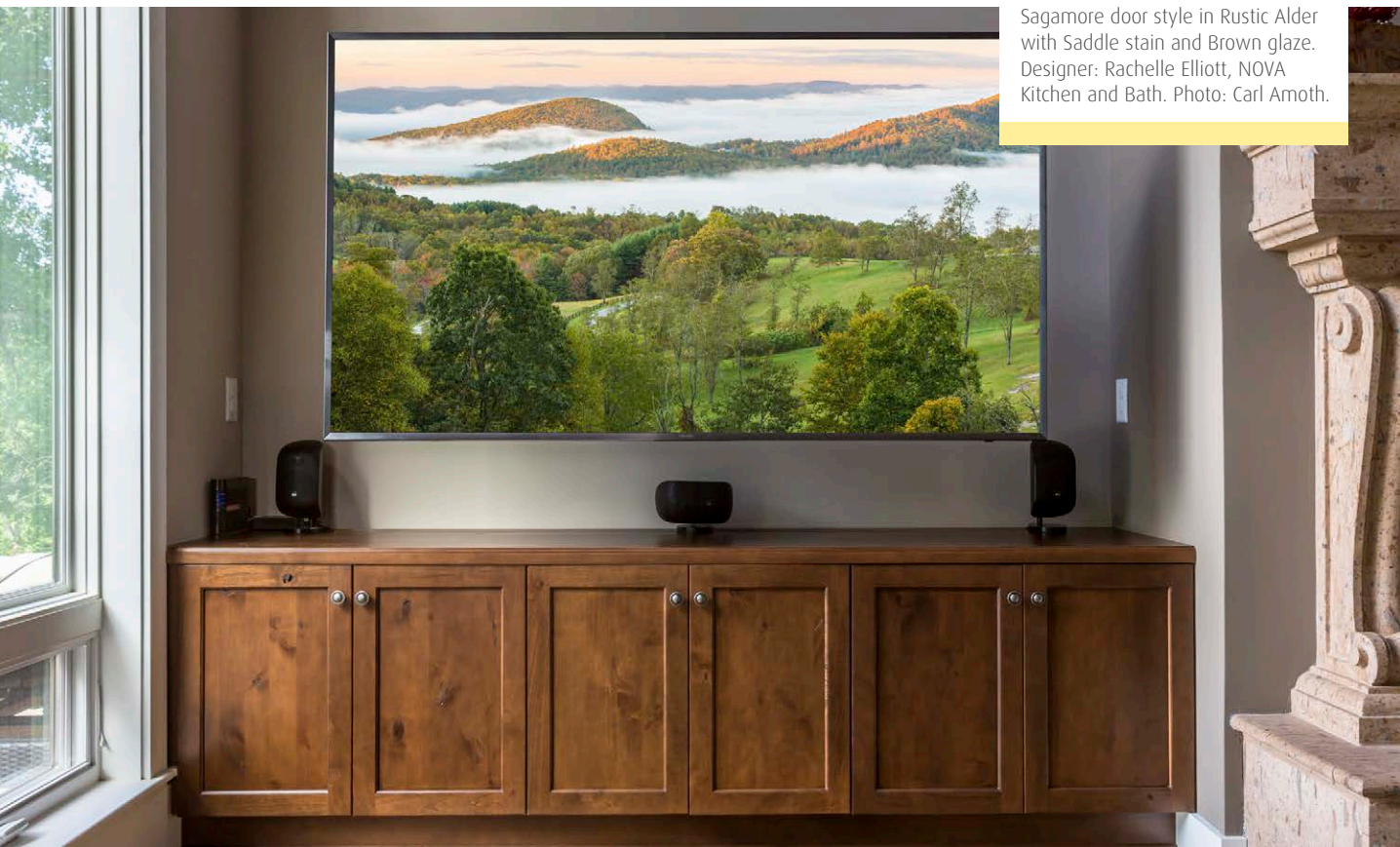
Martin door style in Kodiak Textured Melamine.



Evanston door style in Oak with Platinum Grey stain.



South Beach door style in Linear Bronze UltraLux. Designer: Brian Bene of TOPCO Distributing. Photo: Robert Trawick, Six One Six Studios.



Sagamore door style in Rustic Alder with Saddle stain and Brown glaze. Designer: Rachelle Elliott, NOVA Kitchen and Bath. Photo: Carl Amoth.



South Beach door style in Linear Bronze UltraLux. The New American Home, Las Vegas, NV.



Rockford door style in Eggshell paint with Brown Linen glaze. Designer: Angela Goodall, Kitchen Choreography. Photo: Jason Hulet.



Blum® Metal Drawer Divider System

Accessories

The fun of designing a new kitchen kicks up a notch when you're choosing accessories. We offer components that display, hide, pull out, spin, illuminate and organize.

The cooks in your family will appreciate how well we organize spices, pots and pans, and how we free-up counter space with dedicated storage for idle counter appliances.

When you entertain, LED lighting mellows the mood, Soft Close drawer glides cushion the noise, and built-in wine racks add a sophistication to the evening.

In the ultimate UltraCraft kitchen, everything has a place. The pantries arrange neatly, drawers stay organized, lazy Susans save time, trash bins hide, and the bi-fold, swing-out and flip-up doors are ... well, they're just cool.

Enjoy the process of working with your UltraCraft designer and then revel in your UltraCraft reality!



Fineline Cutlery Tray System



Wood Dovetail Drawers with Soft Close



Wood Dovetail Pull-outs with Soft Close



Metal Drawers with Soft Close



Metal Drawers with Soft Close and Touch-To-Open



Metal Pull-outs with Soft Close



Fineline Pegboard System for Deep Drawers



Blum Metal Drawer Divider System for Top Drawers



Blum Metal Drawer Divider System for Deep Drawers



Fineline Move Boxes for Drawers and Pantries



Dovetail Cutlery Insert



Stainless Steel Drawer Dividers



Wood Knife Block



K Cup Drawer Insert



Spice Drawer



Plate Holders



Bread Bin



Farm Sink Base



Sink Mat Kit



Tilt-out Tray



Chrome Wire Pull-outs Blind Corner Base Cabinet



Kessebohmer Tall Larder, Dispensa and Pantry Cabinets



Kessebohmer Pantry Base Cabinets



Kessebohmer Pull-outs



Kessebohmer Lemans Pull-outs for Blind Corner Base Cabinets



Kessebohmer Twister Lazy Susans



Kessebohmer Chrome Rail Lazy Susans



Wood Lazy Susans



Century Waste Bin Base Cabinets



Kessebohmer Waste Basket Base Cabinets



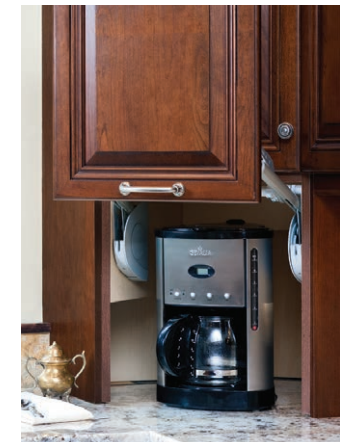
Hanging Trash Bins Base Cabinets



Revolving Recycle Bins



Bi-Fold, Flip Up, and Swing Up Doors



Appliance Garages



Century Pantry Tall Cabinets



Century Organizer Base Cabinets



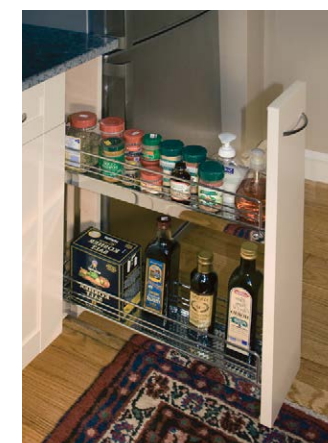
Century Cookie Tray Base Cabinets



Century Canister Pull-out Base Cabinets



Glideware Pot and Pan Rack



Spice Pull-outs and Organizers



Mixer Storage



Kessebohmer Sink Caddy



LED Lighting and Glass Shelves



Spice Drawers



Letter File



Decorative Range Hoods



Wicker Basket Cabinet



Electronics Pull-out Shelf



X Wine Rack



Wine Cubes



Wine Accessories



Appliance Panels



Metal Base Pedestal



Euro Island Cabinets with Feet



Decorative Brackets, Corbels, Feet, Legs and Posts



Wainscoting



Mouldings & Trim



Light Rails



Decorative Valances



Open Wall Shelves



Integrated Door & Drawer Pulls



KITCHEN CABINET MANUFACTURERS ASSOCIATION
ENVIRONMENTAL STEWARDSHIP PROGRAM.
ALL PRODUCTS IMPACT THE ENVIRONMENT.
FOR ESP PROGRAM CRITERIA, VISIT KCMA.ORG



©2020 UltraCraft. UltraCraft Cabinetry
is a Norcraft Companies brand. Norcraft
Companies is part of the MasterBrand
Cabinets Family.



\$25.00

Printed 3/28/19 PDF Updated 4/27/20

UltraCraft Advantages

- Hundreds of doors in every popular material, finish and style from traditional to ultra-modern
- Soft Close Drawers and Doors
- First class Wood Dovetail and Metal Drawer systems
- Free, custom size modifications for most cabinets; ask your designer for details
- Designer colors and modern Low Sheen finish at no upcharge
- Custom paint colors
- Popular paint, glaze, linen and distressed finishes at low upcharges
- All-Plywood or Engineered Furniture Core construction
- Full Access construction means more storage, easy-to-clean, and precise alignment
- Full-depth, adjustable shelves
- Made in America from domestically- and globally-sourced components
- 100-year Limited Warranty

Front Cover – Piper door style in Deep Burn Vertical and Archicrete Textured Melamine, and Broadline Aluminum door style with Timber Black Etch Tech Glass inserts.

Back Cover – Crystal Lake door style in Maple with Melted Brie paint. Designer: Terry Trefry, Peacock Cabinetry. Photo: Randy Jeffcoat Builders.

ultracraft®

800.803.2315
www.ultracraft.com