

FLUSH & MOLDED DOORS

REEB® IN-STOCK FLUSH & MOLDED CATALOG



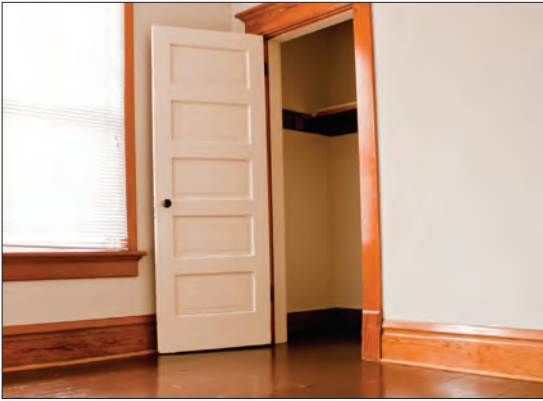
Simple & Cost Effective

Reeb® offers a wide variety of molded doors designed to replicate the look and feel of a traditional wood door at an affordable price.

With layout options from modern and minimalist to classic and conventional, molded interior doors are a popular option in both residential and light-commercial applications.



Door Styles



Molded Doors

Molded doors are constructed when a series of panels or design is stamped by a mold into a hardboard fiber material to create the door face. They are manufactured to resemble the look of an interior stile and rail wood door. Solid Particle Core molded doors are available in a variety of designs and can replicate the heavy weight and feel of a real wood door while providing the benefit of noise reduction for a peaceful environment.



Finishing

Molded doors are available in smooth or textured surfaces. They arrive primed and ready for painting after a light sanding and minor preparation. Because of the materials used in their construction, staining is not an option. Always make sure to finish all six sides.



Flush Doors

Flush doors are constructed using a mixture of wood and wood-fiber components and feature a completely flat surface for a simple and economical design option. They are available in a variety of wood species, most of which can be painted or stained. Some flush doors also come in a primed hardboard or woodgrained pre-finished option.

Finishing

Flush doors are available in paint-grade, stain-grade and primed hardboard options. Primed flush doors require only a light sanding and cleaning before applying a base coat.



Stain-Grade:

Birch and Oak doors feature solid wood edges and all the pleasing color variations and grain patterns found in a natural wood product. They look great painted or stained.



Paint-Grade:

Lauan doors typically feature irregular colors and grain patterns that most homeowners will opt to paint over. Flush hardboard doors are factory primed and ready for painting.

Door Applications

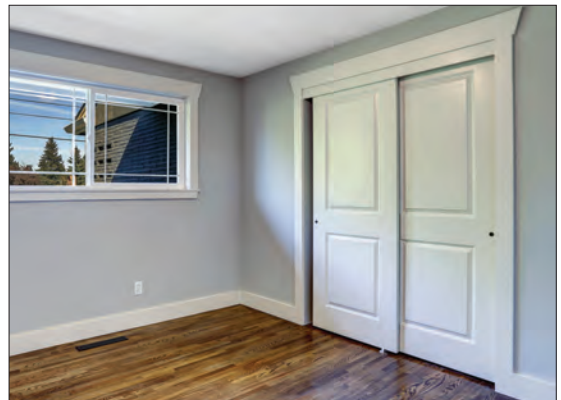


Bifold Doors

Bifold doors are a popular option for saving room in closet areas or other tight spaces throughout your home. These doors provide better access to small areas and take up minimal space. All Reeb® molded bifold doors feature panels on both sides.

Sliding Bypass Doors

Sliding Bypass doors are configured by hanging two or more interior doors mounted to a track. They do not swing and are typically useful in areas with little available floor space.



Pocket Doors

Pocket doors slide similarly to a bypass door, but are generally a single door mounted to an overhead track that slides into the wall, hiding the components and saving space.

Custom Sized Doors

For odd sized openings, doors can be crafted from standard flush and molded components, for example, attic access and under the stairs storage. Flush doors can be reduced to any height to fit your requirements. Depending on the specific design, some molded doors can also be reduced to fit custom applications.



Barn Door Track Hardware

Barn Door Track Hardware allows the door to slide horizontally beyond the opening on a track mounted above the door. This allows you to make the most of your available living space while adding a rustic, yet elegant look.

See page 36 for more information on Barn Door Track Hardware.

Slab or Door Unit

Single Door
(No Frame)

Pre-Hung Unit
(Fully Assembled)



Doors can be purchased as a single door only (no frame) or fully assembled pre-hung units.

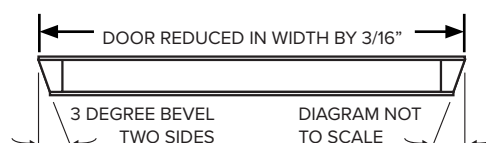
In a pre-hung unit, the door comes mounted in a frame with hinges already attached to a door jamb. Reeb® stocks several paint-grade and stain-grade jamb options to complement the door.

See page 32 to learn more.

Reeb stocks interior doors with the option of either "full and square" or pre-fit and beveled edges.

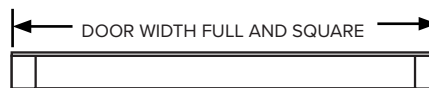
Pre-fit and Beveled Edges

Typically used on pre-hung door units, edges are undersized by 3/16" and feature a 3 degree bevel on both sides, eliminating the need to field-trim the door to fit the frame.



Full and Square Edges

Typically used for replacements, these doors feature a 90 degree angle on all edges, allowing the door to be field-trimmed if necessary.



Construction Types

Solid Particle Core (SC)

- Weight and feel of a wood door
- Reduces sound transmission
- Reeb® stocks Solid Particle Core doors with a bottom rail and wood stiles and rails for additional screw holding power
- Great for residential and light-commercial applications like living rooms, bedrooms, hallways and large storage areas
- Can be fire-rated up to 20 minutes with certified frames and hardware

See pages 8-9 for more information on Solid Particle Core construction.



Hollow Core (HC)

- Standard offering includes wood stiles for added screw holding power and easy size reductions
- Also available with MDF/Fiber stiles
- Commonly used in residential applications where sound transmission and durability is not a primary concern

See pages 10-11 for more information on Hollow Core construction.



Solid Particle Core (SC)

Construction

1. **Wood Stiles & Rails:** Made of solid wood for extra screw holding power
2. **Face:** 1/8" molded hardboard skin available in smooth or textured painting surface
3. **Core:** Solid particle board core routed to match molded skin design
4. **Thickness:** Available in 1-3/8" & 1-3/4"
5. **Height:** Available in 6/8, 7/0 & 8/0



A Wood Rail

Field-trimming can affect fire ratings. To ensure proper ratings, doors must be factory trimmed by Reeb®)

Rail (6/8 height, 1-3/8" thickness doors):

Fiber top and bottom rail. Cannot be field-trimmed without reblocking. If trimming is required, please consider purchasing doors with wood stiles.

Rail (6/8 height, 1-3/4" thickness doors):

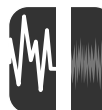
1" top rail and 2" bottom rail, allowing the door to be field-trimmed up to 1"

Rail (7/0 & 8/0 height): All doors in 7/0 and 8/0 height have a 1" top rail and a 2" bottom rail allowing the door to be field trimmed up to 1"



Fire Rating

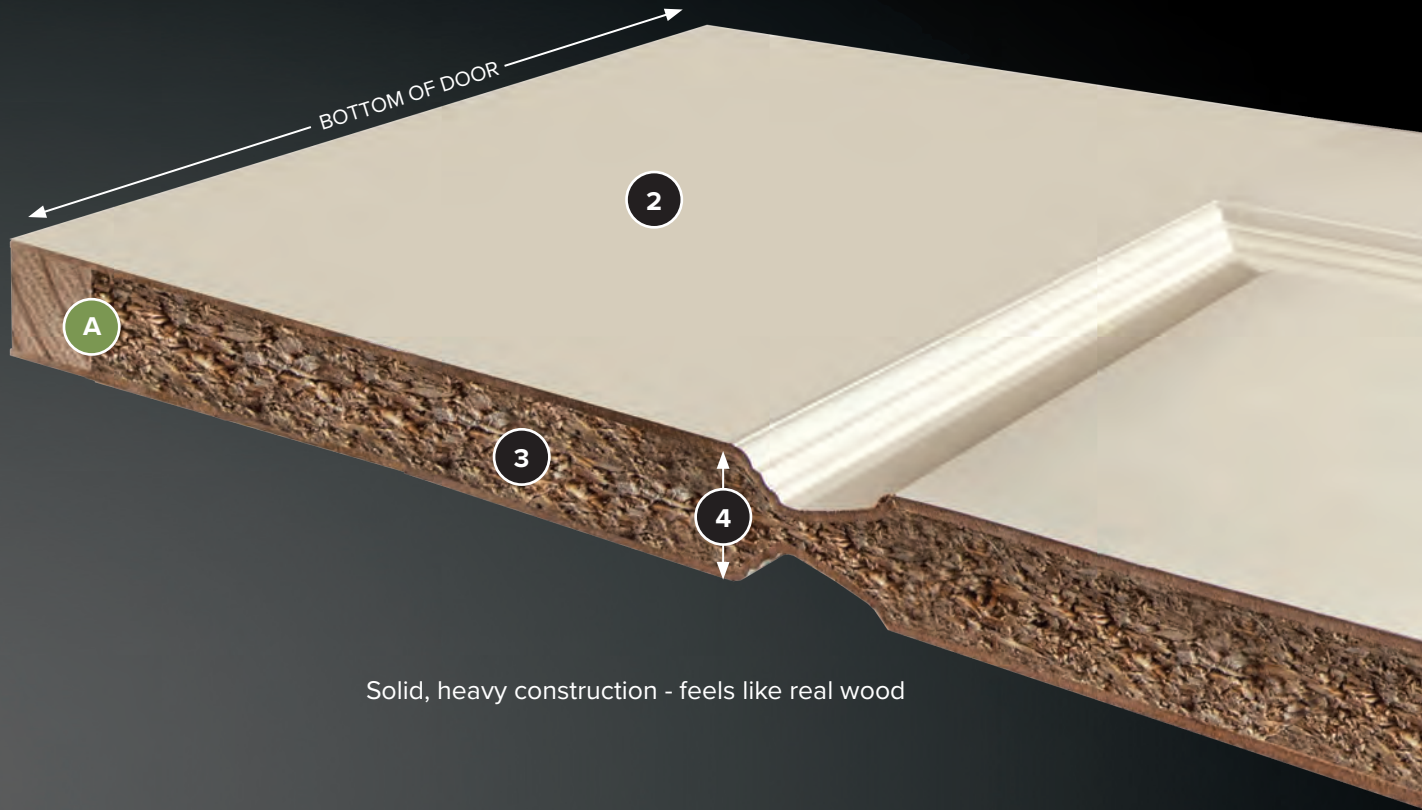
UP TO 20 MINUTES
1-3/4" ONLY



Sound Benefits

REDUCED SOUND
TRANSMISSION

Solid Particle Core molded doors are used in a variety of residential and light-commercial interior applications. The advantages of solid particle core construction are added security and reduced sound transmission while the heavier weight and feel is similar to a wood stile and rail door. Reeb® offers a wide variety of designs with smooth or textured surfaces.



Solid, heavy construction - feels like real wood

Panel Options

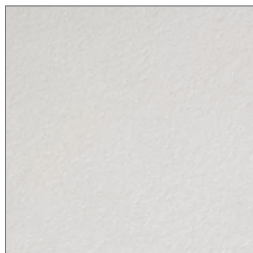


Raised Panel

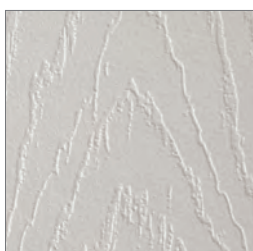


Flat Panel

Surface Options

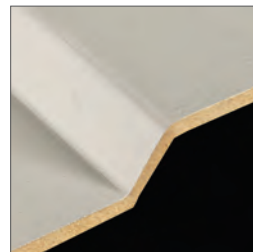


Smooth Surface



Textured Surface

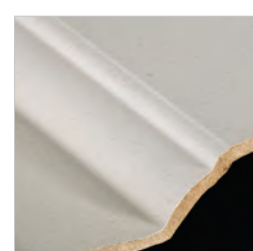
Sticking Options



Craftsman Sticking



Cove & Bead Sticking



Ovolo Sticking



Step Sticking

Hollow Core (HC)

Construction

1. **Wood Stile (Left Side):** Wood stiles for additional screw holding power
2. **Fiber Stile (Right Side):** Medium density fiberboard (MDF) stiles
3. **Blocking:** Provides support for door faces
4. **Face:** 1/8" molded hardboard skin available in smooth or textured painting surface
5. **Core:** Hollow core routed to match molded skin design
6. **Thickness:** Available in 1-3/8" Only
7. **Wood Stile Height (Left Side):** Available in 6/8, 7/0 & 8/0
8. **Fiber Stile Height (Right Side):** Available in 6/8 Only



A Wood Stile Hollow Core Door

Rail (6/8 height, 1-3/8" thickness doors): Fiber top and bottom rail. Cannot be field-trimmed without reblocking. If trimming is required, please consider purchasing doors with wood stiles.

Rail (7/0 & 8/0 height, 1-3/8" thickness doors): 1" fiber top rail and a 2" fiber bottom rail, allowing the door to be field-trimmed up to 1"

B Fiber Stile Hollow Core Door

Rail: (6/8 Height, 1-3/8" thickness doors): Fiber top and bottom rail. Cannot be field-trimmed without reblocking. If trimming is required, please consider purchasing doors with wood stiles.

Hollow Core molded doors offer a lighter-weight, economic alternative to wood stile and rail interior doors. Available in a variety of designs with smooth or textured surfaces.



Panel Options



Raised Panel

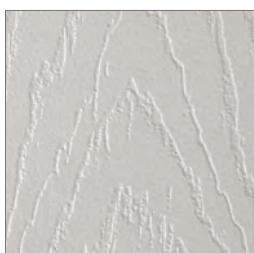


Flat Panel

Surface Options

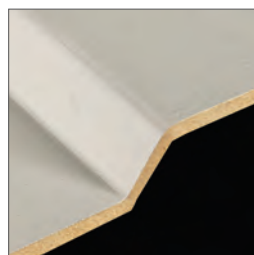


Smooth Surface



Textured Surface

Sticking Options



Craftsman Sticking



Cove & Bead Sticking

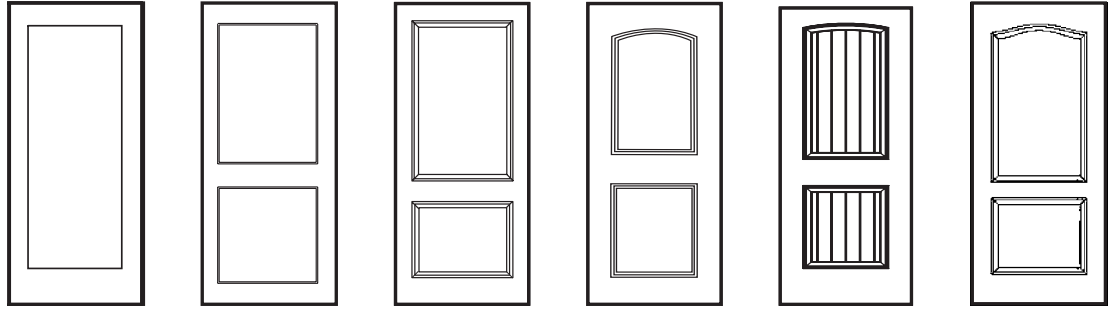


Ovolo Sticking



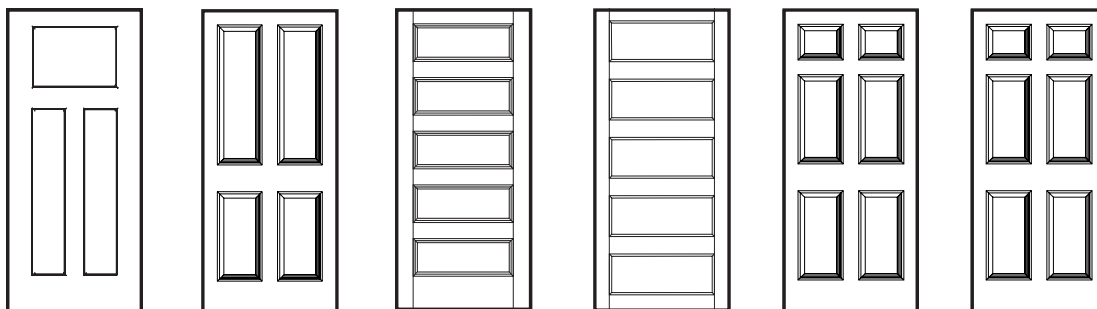
Step Sticking

Layouts



MOLDED DOORS	Maddox	Montgomery	Cambrian	Connelly	Sandhurst	Camdale
LAYOUT	1 Panel	2 Panel	2 Panel	2 Panel	2 Panel	2 Panel
PANEL TYPE	Flat Panel	Flat Panel	Raised Panel	Raised Panel	V-Groove Plank	Raised Panel
SURFACE	Smooth	Smooth	Smooth	Smooth	Smooth	Textured
STICKING	Craftsman	Craftsman	Cove & Bead	Cove & Bead	Ovolo	Cove & Bead
Solid Particle Core						
HEIGHT	6/8, 7/0, 8/0	6/8, 8/0	6/8, 7/0, 8/0	6/8, 7/0, 8/0	6/8, 7/0, 8/0	6/8
THICKNESS	1-3/8" & 1-3/4"	1-3/8" & 1-3/4"	1-3/8" & 1-3/4"	1-3/8" & 1-3/4"	1-3/8" & 1-3/4"	1-3/8" & 1-3/4"
FIRE RATING	20 Minute	20 Minute	20 Minute	20 Minute	20 Minute	20 Minute
Hollow Core						
HEIGHT	6/8	6/8, 8/0	6/8, 7/0, 8/0	6/8, 7/0, 8/0	6/8, 7/0, 8/0	6/8
THICKNESS	1-3/8"	1-3/8"	1-3/8"	1-3/8"	1-3/8"	1-3/8"
FIRE RATING	None	None	None	None	None	None
PAGE	page 14	page 15	page 16	page 17	page 18	page 19

* 1-3/4" Available in 6/8 & 8/0 Only



MOLDED DOORS	Crayburn	Keystone	Rochele	Connivo	Colburn Smooth	Colburn Textured
LAYOUT	3 Panel	4 Panel	5 Panel	5 Panel	6 Panel	6 Panel
PANEL TYPE	Flat Panel	Raised Panel	Raised Panel	Flat Panel	Raised Panel	Raised Panel
SURFACE	Smooth	Smooth	Smooth	Smooth	Smooth	Textured
STICKING	Craftsman	Cove & Bead	Cove & Bead	Step	Cove & Bead	Cove & Bead
<i>Solid Particle Core</i>						
HEIGHT	6/8, 7/0	6/8	6/8, 7/0, 8/0	6/8, 7/0	6/8, 7/0, 8/0	6/8, 7/0
THICKNESS	1-3/8" & 1-3/4"	1-3/8" & 1-3/4"*	1-3/8" & 1-3/4"	1-3/8" & 1-3/4"†	1-3/8" & 1-3/4"	1-3/8" & 1-3/4"†
FIRE RATING	20 Minute	20 Minute	20 Minute	20 Minute	20 Minute	20 Minute
<i>Hollow Core</i>						
HEIGHT	6/8, 7/0	6/8	6/8, 7/0, 8/0	6/8, 7/0	6/8, 7/0, 8/0	6/8, 7/0, 8/0
THICKNESS	1-3/8"	1-3/8"	1-3/8"	1-3/8"	1-3/8"	1-3/8"
FIRE RATING	None	None	None	None	None	None
PAGE	page 20	page 21	page 22	page 23	page 24	page 25

† 1-3/4" Available in 6/8 Only

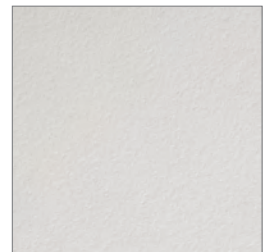
Maddox

LAYOUT OPTIONS

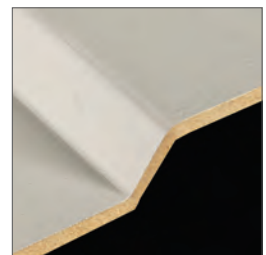


		STANDARD				TALL	
HEIGHT		6/8		7/0		8/0	
THICKNESS		1-3/8"	1-3/4"	1-3/8"	1-3/4"	1-3/8"	1-3/4"
Door Sizes							
STANDARD WIDTH	1/0	SC/HC					
	1/2	SC/HC					
	1/3	SC/HC					
	1/4	SC/HC					
	1/6	SC/HC	SC	SC/HC		SC	
	1/8	SC/HC		SC			
	1/10	SC/HC					
	2/0	SC/HC	SC	SC/HC	SC	SC	
	2/2	SC/HC					
	2/4	SC/HC	SC	SC/HC	SC	SC	
	2/6	SC/HC	SC	SC/HC	SC	SC	SC
	2/8	SC/HC	SC	SC/HC	SC	SC	SC
	2/10	SC/HC	SC	SC	SC	SC	
	3/0	SC/HC	SC	SC/HC	SC	SC	SC

6/8	
1-3/8"	
Bi-Fold Sizes	
2 DOOR	
2/0	SC/HC
2/4	
2/6	SC/HC
2/8	
3/0	SC/HC
4 DOOR	
4/0	SC/HC
4/8	
5/0	SC/HC
5/4	
6/0	SC/HC



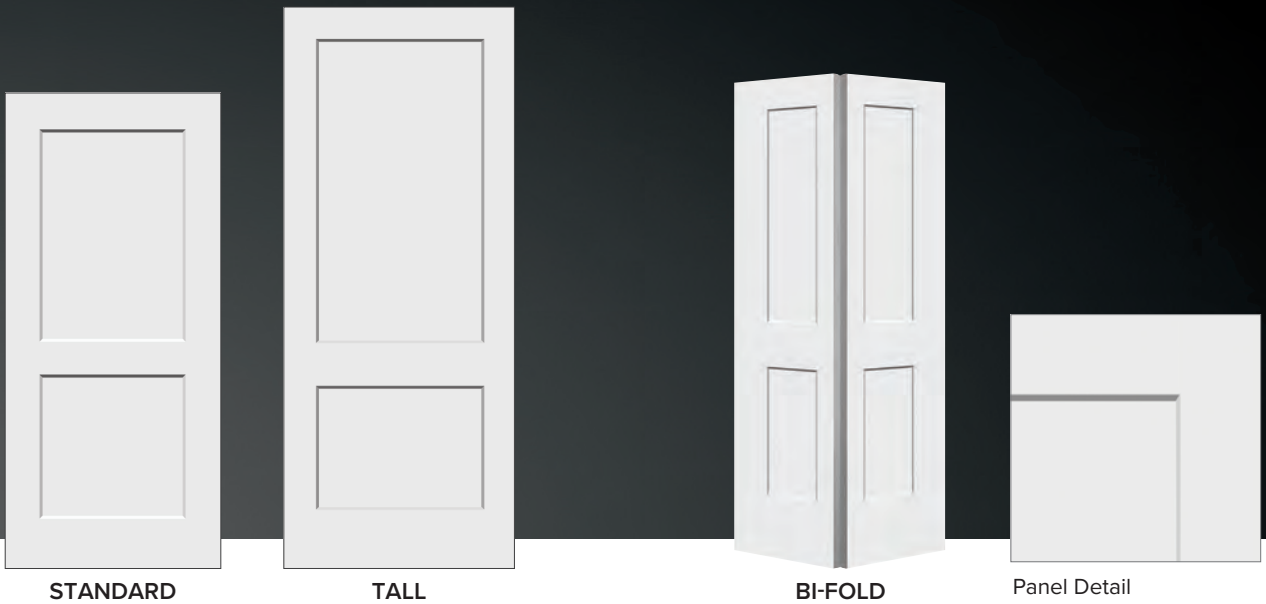
Smooth Surface



Craftsman Sticking

Montgomery

LAYOUT OPTIONS



STANDARD

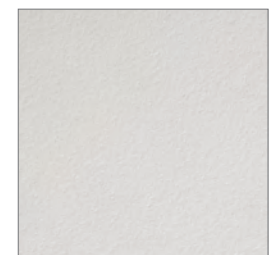
TALL

BI-FOLD

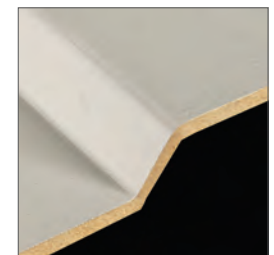
Panel Detail

		STANDARD				TALL	
HEIGHT		6/8		7/0 - N/A		8/0	
THICKNESS		1-3/8"	1-3/4"	1-3/8"	1-3/4"	1-3/8"	1-3/4"
Door Sizes							
STANDARD WIDTH	1/0	HC					
	1/2	HC					
	1/3	HC					
	1/4	HC					
	1/6	SC/HC		HC		SC/HC	
	1/8	HC					
	1/10	HC					
	2/0	SC/HC		HC		SC/HC	
	2/2	HC					
	2/4	SC/HC		HC		SC/HC	
	2/6	SC/HC		HC		SC/HC	
	2/8	SC/HC	SC	HC		SC/HC	SC
	2/10	SC/HC					
	3/0	SC/HC	SC	HC		SC/HC	SC

6/8	
1-3/8"	
Bi-Fold Sizes	
2 DOOR	
2/0	SC/HC
2/4	
2/6	SC/HC
2/8	
3/0	SC/HC
4 DOOR	
4/0	SC/HC
4/8	
5/0	SC/HC
5/4	
6/0	SC/HC



Smooth Surface



Craftsman Sticking

SC = Solid Particle Core Construction
 HC = Hollow Core Construction
 ☒ = No Standard Bore Possible

Cambrian

LAYOUT OPTIONS



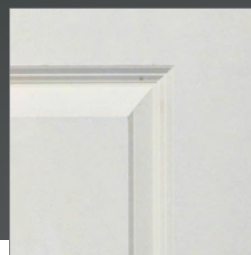
STANDARD



TALL



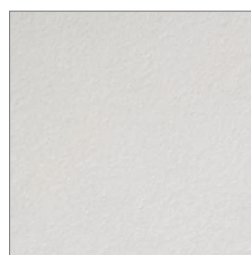
BI-FOLD



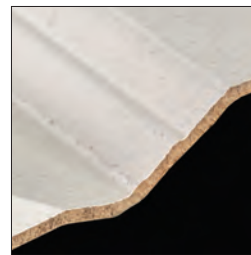
Panel Detail

		STANDARD				TALL	
HEIGHT		6/8		7/0		8/0	
THICKNESS		1-3/8"	1-3/4"	1-3/8"	1-3/4"	1-3/8"	1-3/4"
Door Sizes							
STANDARD WIDTH	1/0	SC/HC		SC/HC		SC/HC	
	1/2	SC/HC		SC/HC		SC/HC	
	1/3	SC/HC		SC/HC		SC/HC	
	1/4	SC/HC		SC/HC		SC/HC	
	1/6	SC/HC	SC	SC/HC	SC	SC/HC	SC
	1/8	SC/HC		SC/HC		SC/HC	
	1/10	SC/HC		SC/HC		SC/HC	
	2/0	SC/HC	SC	SC/HC	SC	SC/HC	SC
	2/2	SC/HC		SC/HC		SC/HC	
	2/4	SC/HC	SC	SC/HC	SC	SC/HC	SC
	2/6	SC/HC	SC	SC/HC	SC	SC/HC	SC
	2/8	SC/HC	SC	SC/HC	SC	SC/HC	SC
	2/10	SC/HC	SC	SC/HC	SC	SC/HC	SC
	3/0	SC/HC	SC	SC/HC	SC	SC/HC	SC

6/8	
1-3/8"	
Bi-Fold Sizes	
2 DOOR	
2/0	SC/HC
2/4	HC
2/6	SC/HC
2/8	HC
3/0	SC HC
4 DOOR	
4/0	SC/HC
4/8	HC
5/0	SC/HC
5/4	HC
6/0	SC/HC



Smooth Surface



Cove & Bead Sticking

6/8 Hollow Core 1-3/8" doors are stocked with fiber stiles in the following sizes:

1/6, 2/0, 2/4, 2/6, 2/8, 2/10, 3/0

Connelly

LAYOUT OPTIONS



STANDARD

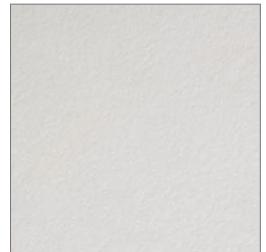
TALL

BI-FOLD

Panel Detail

		STANDARD				TALL	
HEIGHT		6/8		7/0		8/0	
THICKNESS		1-3/8"	1-3/4"	1-3/8"	1-3/4"	1-3/8"	1-3/4"
Door Sizes							
STANDARD WIDTH	1/0	SC/HC		SC/HC			
	1/2	SC/HC		SC/HC			
	1/3	SC/HC		SC/HC			
	1/4	SC/HC		SC/HC			
	1/6	SC/HC	SC	SC/HC	SC	SC/HC	SC
	1/8	SC/HC		SC/HC		SC/HC	
	1/10	SC/HC		SC/HC		SC/HC	
	2/0	SC/HC	SC	SC/HC	SC	SC/HC	SC
	2/2	SC/HC		SC/HC		SC/HC	
	2/4	SC/HC	SC	SC/HC	SC	SC/HC	SC
	2/6	SC/HC	SC	SC/HC	SC	SC/HC	SC
	2/8	SC/HC	SC	SC/HC	SC	SC/HC	SC
	2/10	SC/HC	SC	SC/HC	SC	SC/HC	SC
	3/0	SC/HC	SC	SC/HC	SC	SC/HC	SC

6/8	
1-3/8"	
Bi-Fold Sizes	
2 DOOR	
2/0	SC/HC
2/4	HC
2/6	SC/HC
2/8	HC
3/0	SC/HC
4 DOOR	
4/0	SC/HC
4/8	HC
5/0	SC/HC
5/4	HC
6/0	SC/HC



Smooth Surface



Cove & Bead Sticking

6/8 Hollow Core 1-3/8" doors are stocked with fiber stiles in the following sizes:

1/6, 2/0, 2/4, 2/6, 2/8, 2/10, 3/0

SC = Solid Particle Core Construction
 HC = Hollow Core Construction
 ☒ = No Standard Bore Possible

Sandhurst

LAYOUT OPTIONS



STANDARD



TALL



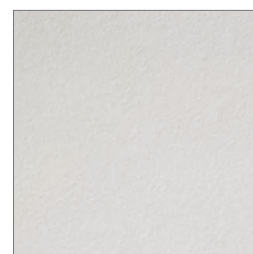
BI-FOLD



Panel Detail

		STANDARD				TALL	
HEIGHT		6/8		7/0		8/0	
THICKNESS		1-3/8"	1-3/4"	1-3/8"	1-3/4"	1-3/8"	1-3/4"
Door Sizes							
STANDARD WIDTH	1/0	SC/HC					
	1/2	SC/HC					
	1/3	SC/HC					
	1/4	SC/HC					
	1/6	SC/HC	SC	SC/HC		SC/HC	
	1/8	SC/HC		SC/HC		SC/HC	
	1/10	SC/HC					
	2/0	SC/HC	SC	SC/HC		SC/HC	
	2/2	SC/HC					
	2/4	SC/HC	SC	SC/HC		SC/HC	
	2/6	SC/HC	SC	SC/HC	SC	SC/HC	SC
	2/8	SC/HC	SC	SC/HC	SC	SC/HC	SC
	2/10	SC/HC	SC				
	3/0	SC/HC	SC	SC/HC	SC	SC/HC	SC

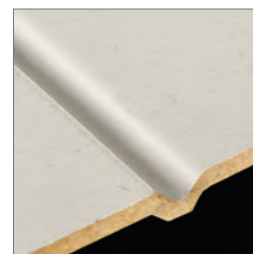
6/8	
1-3/8"	
Bi-Fold Sizes	
2 DOOR	
2/0	SC/HC
2/4	HC
2/6	SC/HC
2/8	HC
3/0	SC/HC
4 DOOR	
4/0	SC/HC
4/8	HC
5/0	SC/HC
5/4	HC
6/0	SC/HC



Smooth Surface



Ovolo Sticking



V-Groove Plank

Camdale

LAYOUT OPTIONS



STANDARD



BI-FOLD



Panel Detail

		STANDARD				TALL	
HEIGHT		6/8		7/0 - N/A		8/0 - N/A	
THICKNESS		1-3/8"	1-3/4"	1-3/8"	1-3/4"	1-3/8"	1-3/4"
Door Sizes							
STANDARD WIDTH	1/0	SC/HC					
	1/2	SC/HC					
	1/3	SC/HC					
	1/4	SC/HC					
	1/6	SC/HC					
	1/8	SC/HC					
	1/10	SC/HC					
	2/0	SC/HC					
	2/2	SC/HC					
	2/4	SC/HC					
	2/6	SC/HC	SC				
	2/8	SC/HC	SC				
	2/10	SC/HC					
	3/0	SC/HC	SC				

6/8	
1-3/8"	
Bi-Fold Sizes	
2 DOOR	
2/0	SC/HC
2/4	HC
2/6	SC/HC
2/8	HC
3/0	SC/HC
4 DOOR	
4/0	SC/HC
4/8	HC
5/0	SC/HC
5/4	HC
6/0	SC/HC



Textured Surface



Cove & Bead Sticking

6/8 Hollow Core 1-3/8" doors are stocked with fiber stiles in the following sizes:

1/4, 1/8, 1/10, 2/0, 2/2, 2/4, 2/6, 2/8, 2/10, 3/0

SC = Solid Particle Core Construction
 HC = Hollow Core Construction
 ☒ = No Standard Bore Possible

Crayburn

LAYOUT OPTIONS



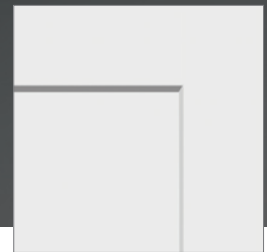
NARROW



STANDARD



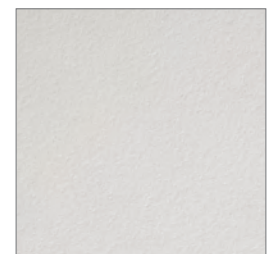
BI-FOLD



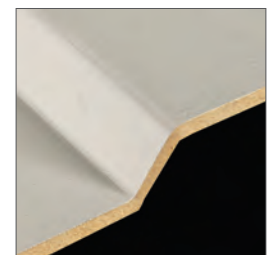
Panel Detail

		STANDARD				TALL	
HEIGHT		6/8		7/0		8/0 - N/A	
THICKNESS		1-3/8"	1-3/4"	1-3/8"	1-3/4"	1-3/8"	1-3/4"
Door Sizes							
NARROW WIDTH	1/0	SC/HC		SC/HC			
	1/2	SC/HC		SC/HC			
	1/3	SC/HC		SC/HC			
	1/4	SC/HC		SC/HC			
	1/6	SC/HC	SC	SC/HC			
	1/8	SC/HC		SC/HC			
	1/10	SC/HC		SC/HC			
STANDARD WIDTH	2/0	SC/HC	SC	SC/HC			
	2/2	SC/HC		SC/HC			
	2/4	SC/HC	SC	SC/HC			
	2/6	SC/HC	SC	SC/HC	SC		
	2/8	SC/HC	SC	SC/HC	SC		
	2/10	SC/HC	SC	SC/HC			
	3/0	SC/HC	SC	SC/HC	SC		

6/8	
1-3/8"	
Bi-Fold	
2 DOOR	
2/0	SC/HC
2/4	
2/6	SC/HC
2/8	
3/0	SC/HC
4 DOOR	
4/0	SC/HC
4/8	
5/0	SC/HC
5/4	
6/0	SC/HC



Smooth Surface



Craftsman Sticking

Keystone

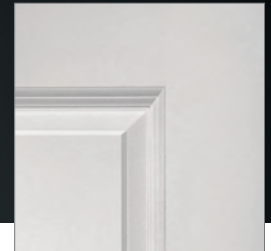
LAYOUT OPTIONS



STANDARD



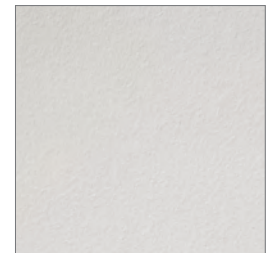
BI-FOLD



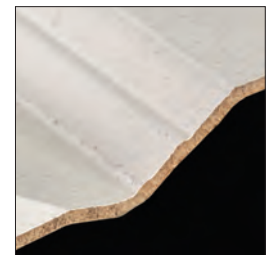
Panel Detail

		STANDARD				TALL	
HEIGHT		6/8		7/0		8/0	
THICKNESS		1-3/8"	1-3/4"	1-3/8"	1-3/4"	1-3/8"	1-3/4"
Door Sizes							
NARROW WIDTH	1/0	SC/HC					
	1/2	SC/HC					
	1/3	SC/HC					
	1/4	SC/HC					
	1/6	SC/HC					
	1/8	SC/HC					
STANDARD WIDTH	1/10	SC/HC					
	2/0	SC/HC					
	2/2	SC/HC					
	2/4	SC/HC					
	2/6	SC/HC	SC				
	2/8	SC/HC	SC				
	2/10	SC/HC					
	3/0	SC/HC	SC				

6/8	
1-3/8"	
Bi-Fold Sizes	
2 DOOR	
2/0	SC/HC
2/4	
2/6	SC/HC
2/8	
3/0	SC/HC
4 DOOR	
4/0	SC/HC
4/8	
5/0	SC/HC
5/4	
6/0	SC/HC



Smooth Surface



Cove & Bead Sticking

6/8 Hollow Core 1-3/8" doors are stocked with fiber stiles in the following sizes:

1/6, 2/0, 2/4, 2/6, 2/8, 3/0

SC = Solid Particle Core Construction
 HC = Hollow Core Construction
 ☒ = No Standard Bore Possible

Rochele

LAYOUT OPTIONS



STANDARD

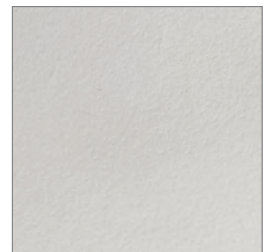
TALL

BI-FOLD

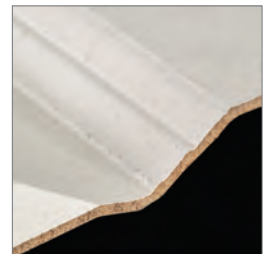
Panel Detail

		STANDARD				TALL	
HEIGHT		6/8		7/0		8/0	
THICKNESS		1-3/8"	1-3/4"	1-3/8"	1-3/4"	1-3/8"	1-3/4"
Door Sizes							
STANDARD WIDTH	1/0	SC/HC					
	1/2	SC/HC					
	1/3	SC/HC					
	1/4	SC/HC					
	1/6	SC/HC	SC	SC/HC		SC/HC	
	1/8	SC/HC		SC/HC		SC/HC	
	1/10	SC/HC				SC/HC	
	2/0	SC/HC	SC	SC/HC		SC/HC	
	2/2	SC/HC				SC/HC	
	2/4	SC/HC	SC	SC/HC		SC/HC	
	2/6	SC/HC	SC	SC/HC	SC	SC/HC	SC
	2/8	SC/HC	SC	SC/HC	SC	SC/HC	SC
	2/10	SC/HC	SC			SC/HC	
	3/0	SC/HC	SC	SC/HC	SC	SC/HC	SC

6/8	
1-3/8"	
Bi-Fold Sizes	
2 DOOR	
2/0	SC/HC
2/4	HC
2/6	SC/HC
2/8	HC
3/0	SC/HC
4 DOOR	
4/0	SC/HC
4/8	HC
5/0	SC/HC
5/4	HC
6/0	SC/HC



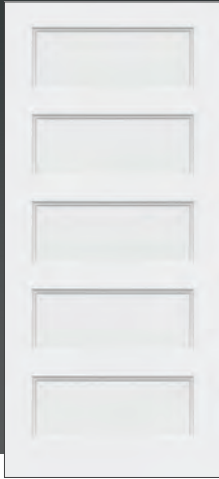
Smooth Surface



Cove & Bead Sticking

Connmivo

LAYOUT OPTIONS



STANDARD



BI-FOLD



Panel Detail

		STANDARD				TALL	
HEIGHT		6/8		7/0		8/0 - N/A	
THICKNESS		1-3/8"	1-3/4"	1-3/8"	1-3/4"	1-3/8"	1-3/4"
Door Sizes							
STANDARD WIDTH	1/0	SC/HC					
	1/2	SC/HC					
	1/3	SC/HC					
	1/4	SC/HC					
	1/6	SC/HC		SC/HC			
	1/8	SC/HC		SC/HC			
	1/10	SC/HC					
	2/0	SC/HC		SC/HC			
	2/2	SC/HC					
	2/4	SC/HC		SC/HC			
	2/6	SC/HC	SC	SC/HC			
	2/8	SC/HC	SC	SC/HC			
	2/10	SC/HC					
	3/0	SC/HC	SC	SC/HC			

6/8	
1-3/8"	
Bi-Fold Sizes	
2 DOOR	
2/0	SC/HC
2/4	
2/6	SC/HC
2/8	
3/0	SC/HC
4 DOOR	
4/0	SC/HC
4/8	
5/0	SC/HC
5/4	
6/0	SC/HC



Smooth Surface



Step Sticking

SC = Solid Particle Core Construction
 HC = Hollow Core Construction
 ☒ = No Standard Bore Possible

Colburn

(Smooth)

LAYOUT OPTIONS

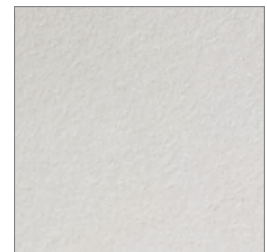


		STANDARD				TALL	
HEIGHT		6/8		7/0		8/0	
THICKNESS		1-3/8"	1-3/4"	1-3/8"	1-3/4"	1-3/8"	1-3/4"
Door Sizes							
NARROW WIDTH	1/0	SC/HC		SC/HC		SC/HC	
	1/2	SC/HC		SC/HC		SC/HC	
	1/3	SC/HC		SC/HC		SC/HC	
	1/4	SC/HC		SC/HC		SC/HC	
	1/6	SC/HC	SC	SC/HC	SC	SC/HC	
	1/8	SC/HC		SC/HC		SC/HC	
STANDARD WIDTH	1/10	SC/HC		SC/HC		SC/HC	
	2/0	SC/HC	SC	SC/HC	SC	SC/HC	SC
	2/2	SC/HC		SC/HC		SC/HC	
	2/4	SC/HC	SC	SC/HC	SC	SC/HC	SC
	2/6	SC/HC	SC	SC/HC	SC	SC/HC	SC
	2/8	SC/HC	SC	SC/HC	SC	SC/HC	SC
	2/10	SC/HC	SC	SC/HC	SC	SC/HC	SC
	3/0	SC/HC	SC	SC/HC	SC	SC/HC	SC

6/8	
1-3/8"	
Bi-Fold Sizes	
2 DOOR	
2/0	SC/HC
2/4	HC
2/6	SC/HC
2/8	HC
3/0	SC/HC
4 DOOR	
4/0	SC/HC
4/8	HC
5/0	SC/HC
5/4	HC
6/0	SC/HC



Panel Detail



Smooth Surface



Cove & Bead Sticking

6/8 Hollow Core 1-3/8" doors are stocked with fiber stiles in the following sizes:

1/6, 2/0, 2/4, 2/6, 2/8, 2/10, 3/0

Colburn

(Textured)

LAYOUT OPTIONS



STANDARD



TALL



BI-FOLD



Panel Detail

		STANDARD				TALL	
HEIGHT		6/8		7/0		8/0	
THICKNESS		1-3/8"	1-3/4"	1-3/8"	1-3/4"	1-3/8"	1-3/4"
Door Sizes							
NARROW WIDTH	1/0	SC/HC				HC	
	1/2	SC/HC				HC	
	1/3	SC/HC				HC	
	1/4	SC/HC				HC	
	1/6	SC/HC				HC	
	1/8	SC/HC				HC	
STANDARD WIDTH	1/10	SC/HC		SC/HC		HC	
	2/0	SC/HC		SC/HC		HC	
	2/2	SC/HC		SC/HC		HC	
	2/4	SC/HC		SC/HC		HC	
	2/6	SC/HC	SC	SC/HC		HC	
	2/8	SC/HC	SC	SC/HC		HC	
	2/10	SC/HC		SC/HC		HC	
	3/0	SC/HC	SC	SC/HC		HC	

6/8	
1-3/8"	
Bi-Fold Sizes	
2 DOOR	
2/0	SC/HC
2/4	HC
2/6	SC/HC
2/8	HC
3/0	SC/HC
4 DOOR	
4/0	SC/HC
4/8	HC
5/0	SC/HC
5/4	HC
6/0	SC/HC



Textured Surface



Cove & Bead Sticking

6/8 Hollow Core 1-3/8" doors are stocked with fiber stiles in the following sizes:

1/0, 1/2, 1/4, 1/6, 1/8, 1/10, 2/0, 2/2, 2/4, 2/6, 2/8, 2/10, 3/0

SC = Solid Particle Core Construction

HC = Hollow Core Construction

ⓧ = No Standard Bore Possible

Flush Doors



SC

Wood bottom rail for added durability and ease of trimming

(Note: Field-trimming can affect fire ratings. To ensure proper ratings, doors must be factory-trimmed by Reeb®)



Fire Rating

UP TO 20 MINUTES
1-3/4" ONLY



Sound Benefits

REDUCED SOUND
TRANSMISSION

Solid Particle Core (SC)

Solid, heavy construction - feels like real wood

Stile: Wood stiles for additional screw holding power

Rail (6/8 height, 1-3/8" thickness doors):

1" top rail and 3" bottom rail, allowing the door to be field-trimmed up to 2"

Rail (6/8 height, 1-3/4" thickness doors):

1" top rail and 2" bottom rail, allowing the door to be field-trimmed up to 1"

Rail (7/0 & 8/0 height): All doors in 7/0 and 8/0 height have a 1" top rail and a 2" bottom rail, allowing the door to be field-trimmed up to 1"

Core: Solid Particle Core manufactured for up to 20-minute fire label requirements

Face: 1/8" face consisting of a 1/64" veneer affixed to an MDF substrate

Height: Available in 6/8, 7/0 & 8/0

Finish: Available in Birch, Lauan, Primed Hardboard and Oak

Thickness: Available in 1-3/8" & 1-3/4"



HC

Hollow Core (HC)

Lighter weight, economic alternative

Stile: Wood stiles for additional screw holding power

Rail (6/8 height, 1-3/8" thickness doors): 1" fiber top rail and 3" fiber bottom rail, allowing the door to be trimmed up to 2"

Rail (7/0 & 8/0 height, 1-3/8" thickness doors): 1" fiber top rail and a 2" fiber bottom rail, allowing the door to be trimmed up to 1"

Core: Honeycomb blocking

Face: 1/8" face consisting of a 1/64" veneer affixed to an MDF substrate

Height: Available in 6/8, 7/0 & 8/0

Finish: Available in Birch, Lauan, Primed Hardboard and Oak

Thickness: Available in 1-3/8" & 1-3/4"



Solid Wood Core (WC)

Heaviest, most durable construction

Stile: Wood stiles for additional screw holding power

Rail (6/8 & 7/0 heights, 1-3/8" & 1-3/4"

thickness doors): 1" wood top rail and 2" wood bottom rail, allowing the door to be trimmed up to 1"

Core: Structural composite lumber

Face: 1/8" face consisting of a 1/64" veneer affixed to an MDF substrate

Height: 6/8 & 7/0

Finish: Available in Birch and Oak

Thickness: Available in 1-3/8" & 1-3/4"

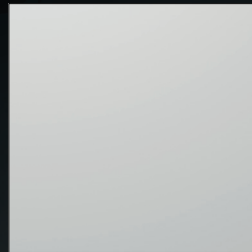
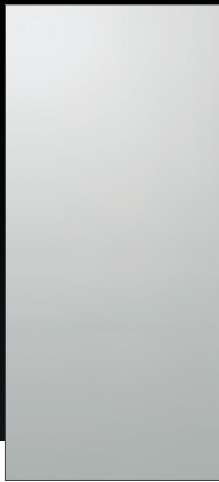


Sound Benefits

REDUCED SOUND
TRANSMISSION



Flush Primed

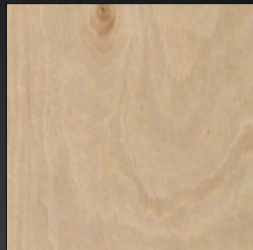


Close-Up

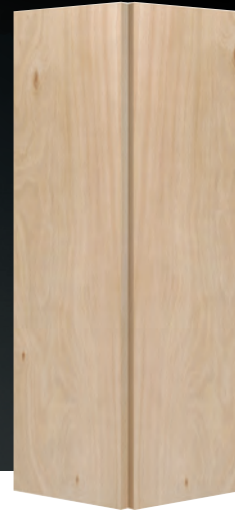
HEIGHT		6/8		7/0		8/0	
THICKNESS		1-3/8"	1-3/4"	1-3/8"	1-3/4"	1-3/8"	1-3/4"
Door Sizes							
STANDARD WIDTH	1/0	SC/HC	SC/HC	SC/HC	SC/HC		
	1/2	SC/HC	SC/HC	SC/HC	SC/HC		
	1/3	SC/HC	SC/HC	SC/HC	SC/HC		
	1/4	SC/HC	SC/HC	SC/HC	SC/HC		
	1/6	SC/HC	SC/HC	SC/HC	SC/HC	SC/HC	SC/HC
	1/8	SC/HC	SC/HC	SC/HC	SC/HC		
	1/10	SC	SC	SC/HC	SC/HC		
	2/0	SC/HC	SC/HC	SC/HC	SC/HC	SC/HC	SC/HC
	2/2	SC	SC	SC/HC	SC/HC		
	2/4	SC/HC	SC/HC	SC/HC	SC/HC	SC/HC	SC/HC
	2/6	SC/HC	SC/HC	SC/HC	SC/HC	SC/HC	SC/HC
	2/8	SC/HC	SC/HC	SC/HC	SC/HC	SC/HC	SC/HC
	2/10	SC	SC	SC/HC	SC/HC		SC
	3/0	SC/HC	SC/HC	SC/HC	SC/HC	SC/HC	SC/HC

6/8 - N/A	
1-3/8"	
Bi-Fold Sizes	
2 DOOR	
2/0	
2/4	
2/6	
2/8	
3/0	
4 DOOR	
4/0	
4/8	
5/0	
5/4	
6/0	

Flush Lauan



Close-Up



BI-FOLD

HEIGHT		6/8		7/0		8/0	
THICKNESS		1-3/8"	1-3/4"	1-3/8"	1-3/4"	1-3/8"	1-3/4"
Door Sizes							
STANDARD WIDTH	1/0	SC/HC		HC		HC	
	1/2	SC/HC		HC		HC	
	1/3	SC/HC		HC		HC	
	1/4	SC/HC		HC		HC	
	1/6	SC/HC		SC/HC		HC	
	1/8	SC/HC		SC/HC		HC	
	1/10	SC/HC		HC		HC	
	2/0	SC/HC	SC/HC	SC/HC	SC	HC	
	2/2	SC/HC	SC	HC	SC	HC	
	2/4	SC/HC	SC	SC/HC	SC	HC	
	2/6	SC/HC	SC/HC	SC/HC	SC	HC	
	2/8	SC/HC	SC/HC	SC/HC	SC	HC	
	2/10	SC/HC	SC	HC	SC	HC	
	3/0	SC/HC	SC/HC	SC/HC	SC/HC	HC	

6/8	
1-3/8"	
Bi-Fold Sizes	
2 DOOR	
2/0	HC
2/4	HC
2/6	HC
2/8	HC
3/0	HC
4 DOOR	
4/0	HC
4/8	HC
5/0	HC
5/4	HC
6/0	HC

Hollow Core Flush Lauan 1-3/8" doors are also stocked in 6/0 and 6/6 heights

SC = Solid Particle Core Construction
 HC = Hollow Core Construction
 WC = Solid Wood Core Construction

Flush Birch



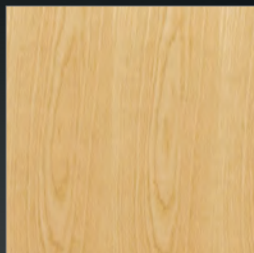
BI-FOLD

HEIGHT		6/8		7/0		8/0	
THICKNESS		1-3/8"	1-3/4"	1-3/8"	1-3/4"	1-3/8"	1-3/4"
Door Sizes							
STANDARD WIDTH	1/0	SC/HC	SC/HC	SC/HC	SC/HC		SC/HC
	1/2	SC/HC	SC/HC	SC/HC	SC/HC		SC/HC
	1/3	SC/HC	SC/HC	SC/HC	SC/HC		SC/HC
	1/4	SC/HC	SC/HC	SC/HC	SC/HC		SC/HC
	1/6	SC/HC	SC/HC	SC/HC	SC/HC	SC	SC/HC
	1/8	SC/HC	SC/HC	SC/HC	SC/HC		SC/HC
	1/10	SC/HC	SC/HC	SC/HC	SC/HC		SC/HC
	2/0	SC/HC/WC	SC/HC/WC	SC/HC	SC/HC/WC	SC/HC	SC/HC
	2/2	SC/HC	SC/HC	SC/HC	SC/HC	HC	SC/HC
	2/4	SC/HC/WC	SC/HC/WC	SC/HC	SC/HC/WC	SC/HC	SC/HC
	2/6	SC/HC/WC	SC/HC/WC	SC/HC	SC/HC/WC	SC/HC	SC/HC
	2/8	SC/HC/WC	SC/HC/WC	SC/HC	SC/HC/WC	SC/HC	SC/HC
	2/10	SC/HC	SC/HC/WC	SC/HC	SC/HC/WC	HC	SC/HC
	3/0	SC/HC/WC	SC/HC/WC	SC/HC	SC/HC/WC	SC/HC	SC/HC
	3/4		WC		WC		
	3/6	SC/HC	SC/HC/WC		SC/HC/WC		SC/HC
	3/8				WC		
	4/0		WC		WC		

6/8	
1-3/8"	
Bi-Fold Sizes	
2 DOOR	
2/0	HC
2/4	HC
2/6	HC
2/8	HC
3/0	HC
4 DOOR	
4/0	HC
4/8	HC
5/0	HC
5/4	HC
6/0	HC

Hollow Core Flush Birch 1-3/8" doors are also stocked in 6/0 and 6/6 heights

Flush Oak



BI-FOLD

HEIGHT		6/8		7/0	
THICKNESS		1-3/8"	1-3/4"	1-3/8"	1-3/4"
Door Sizes					
STANDARD WIDTH	1/0	HC			
	1/2	HC			
	1/3	HC			
	1/4	HC			
	1/6	SC/HC			
	1/8	SC/HC			
	1/10	SC/HC			
	2/0	SC/HC	SC		
	2/2	SC/HC			
	2/4	SC/HC	SC		
	2/6	SC/HC	SC/WC		SC/WC
	2/8	SC/HC	SC/WC		SC/WC
	2/10	SC/HC	SC		
	3/0	SC/HC	SC/WC		SC/WC

6/8	
1-3/8"	
Bi-Fold Sizes	
2 DOOR	
2/0	HC
2/4	HC
2/6	HC
2/8	HC
3/0	HC
4 DOOR	
4/0	HC
4/8	HC
5/0	HC
5/4	HC
6/0	HC

SC = Solid Particle Core Construction
 HC = Hollow Core Construction
 WC = Solid Wood Core Construction

Frames

The frames are the component of a pre-hung unit to which the door is affixed. They are available in a variety of species and either paintable or stainable options to match the door.

Please check with your local dealer for availability.

Frame Profiles

Flat frames are a popular choice and are often accompanied by a stop. Split frames are adjustable to fit a range of frame widths. Frame options are based on your location and market.

Please check with your local dealer for availability.



Fire Door Frames

Fire-rated doors are often used for house-to-garage applications or as entrances to multi-family dwellings. If a fire-rating is desired, it is important to use fire-rated frames. All stock 20 minute fire door frames are available in 4-9/16", 5-1/4", or 6-9/16" widths, and include weatherstrips. Other widths are available upon request.

Clear Pine

Primed

Hinges

Hinges allow the door to open and close. For increased durability and smooth operation, it is recommended to use ball-bearing hinges for heavier doors, such as solid particle core doors.

When using a standard 1-3/8" thick door, a 3-1/2" x 3-1/2" hinge is typically used.

When using a 1-3/4" thick door, a 4" x 4" hinge is typically used.



Non-Ball Bearing Square



Non-Ball Bearing Radius

Non-Ball Bearing Hinges	US1D	US3	US4B	US5	US10B	US15	US26	US26D
3-1/2" x 3-1/2" RSP Square	✓	✓		✓	✓	✓	✓	✓
3-1/2" x 3-1/2" RSP Radius	✓	✓	✓	✓	✓	✓	✓	✓
4" x 4" RSP Square	✓	✓		✓	✓	✓	✓	✓
4" x 4" RSP Radius	✓	✓	✓	✓	✓	✓	✓	✓



Ball Bearing Square



Ball Bearing Radius

Ball Bearing Hinges	US1D	US3	US4B	US5	US10B	US15	US26	US26D
3-1/2" x 3-1/2" RSP Square		✓	✓	✓	✓	✓	✓	✓
3-1/2" x 3-1/2" RSP Radius	✓	✓	✓	✓	✓	✓	✓	✓
4" x 4" RSP Square	✓	✓	✓	✓	✓	✓	✓	✓
4" x 4" RSP Radius	✓	✓	✓	✓	✓	✓	✓	✓

Fire Door Hinges

When completing a fire-rated unit, it is important to utilize self-closing or commercial hinges.



4" x 4"
Self-Closing Hinge

4" Self Closing Hinges	US1D	US3	US4B	US10B	US15	US26	US26D
4" x 4"	✓	✓	✓	✓	✓	✓	✓



4-1/2" x 4-1/2"
Commercial Hinge

4-1/2" Commercial Hinges	US1D	US3	US4B	US10B	US26	US26D
4-1/2" x 4-1/2"	✓	✓	✓	✓	✓	✓
4-1/2" x 4-1/2" Ball Bearing		✓		✓	✓	✓



US1D
Flat Black



US3
Bright Brass



US4B
Bright Satin Brass



US5
Antique Brass



US10B
Oil Rubbed Bronze



US15
Satin Nickel



US26
Bright Chrome



US26D
Satin Chrome

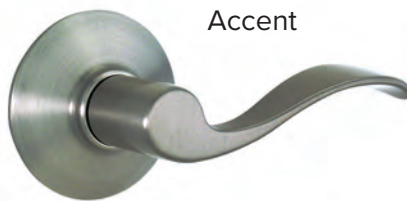
Hardware

Locksets are available in either a knob or lever style and provide tough, reliable performance and enduring style. They are available in multiple finishes to match the hinges used on the door.

Standard Residential Series Locks



Flair



Accent



Plymouth

Builder's Series Locks



LaSalle



Torino



Corona

Fire Door Hardware

Light commercial locksets are recommended to be used on 20 minute doors in public applications. Door closers aid the door in closing and are recommended to be used with 4-1/2" x 4-1/2" commercial ball bearing hinges.



Light Commercial Entry Lock

Recommended to be used with 60 or 90 minute door units.



5300 Series Door Closer

Recommended to be used with 4-1/2" x 4-1/2" commercial ball bearing hinges.

Catches

Catches are an alternative way to close a door and are often used in a closet application. Ball catches and Roller catches are recessed in the top of the door while a Surface Magnetic Catch is installed on the face of the door. A strike is installed on the head jamb and the two keep the door closed without the need of a latch. The Concealed Magnetic Catch is recessed into the top of the door and the head jamb which conceals the catch.

Precision™

Concealed Magnetic Catch



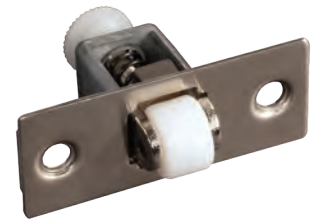
Reeb® Specialty Products Ball Catch

Strike Plate available in:
Bright Brass, Antique Brass, Oil
Rubbed Bronze, Satin Nickel,
Bright Chrome, Satin Chrome



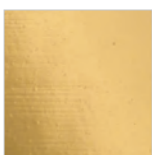
Ives® Surface Magnetic Catch

Magnetic Catch available in:
Bright Brass, Aluminum



Ives® Roller Catch

Roller Catch Face and Strike
available in: Bright Brass, Oil
Rubbed Bronze, Satin Nickel,
Bright Chrome



US3
Bright Brass



US5
Antique Brass



US10B
Oil Rubbed
Bronze



US15
Satin Nickel



US26
Bright Chrome

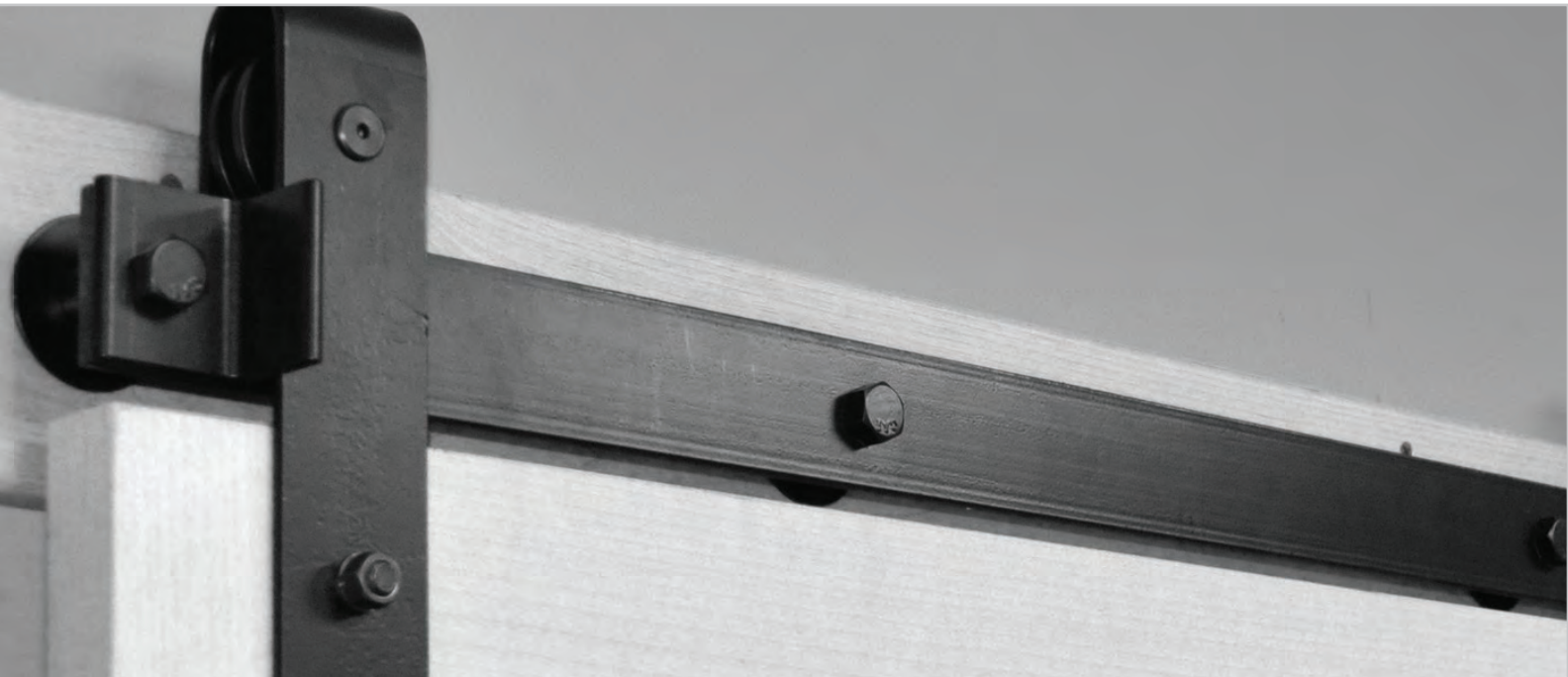


US26D
Satin Chrome



US92
Aluminum

Barn Door Track Hardware



Goldberg® Hardware is a perfect fit for modern, contemporary, and rustic applications and works well with heavier solid particle core doors. Barn doors allow the flexibility to enhance an entire room with a unique accent piece while also adding more functionality to your space.

Available in Black, Silver and Architectural Bronze.

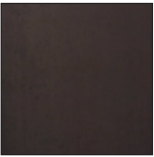
FINISHES



BLACK



SILVER



ARCHITECTURAL
BRONZE

HARDWARE OPTIONS



ROLLER HANGER



7" PULL HANDLE



6" FLUSH PULL



PRIVACY LATCH

Warranty

Handling & Care

Store doors flat on a level surface in a dry, well-ventilated building. Cover to keep clean, but allow air circulation. The utility or structural strength of the door must not be impaired in the fitting of the door, the application of hardware, or cutting and altering the door for lights, louvers, panels or any other special details.

As a general rule, use three hinges for all interior doors. For hollow-core doors weighing less than 50 pounds or under 6/8 in height, two hinges are acceptable. All doors 7/6 or above require four hinges. Allow a fitting clearance of 1/16" on the hinge side and 1/8" on the lock side.

Immediately after fitting or cutting for closure, weatherstrip, and/or threshold and before hanging on the job - any interior or exterior door must receive an application of primer and two coats of high-quality paint, varnish or lacquer on all edges, including the top and bottom. Adequate drying time must be allowed between coats. For job-site finishing, do not use water-thinned paints unless an oil-base prime coat is first applied.

Hanging

If stops and jambs are not set plumb and in a true plane, jambs are not properly squared, or hinges are not set in a straight line, opening and closing the door will result in stress and cause distortion. Three hinges will restrain distortion better than two, but must be set with greater care to have all three in perfect alignment.



Steves Limited 5 Year Warranty

Steves and Sons warrants all doors sold under their warranty to be free from manufacturing defects in material and workmanship for a period of five (5) years from original date of shipment. This warranty is subject to the limitations and conditions of the full warranty which can be found at reeb.com/warranties or www.stevesdoors.com.

Finish Requirements

Finish should be applied immediately after fitting, making certain that all six sides are primed and given two coats of paint, varnish or sealer before hanging. In too many instances, the doors are hung prior to finishing, meaning the bottom edge likely receives no paint or sealer. The bottom edge is the most vulnerable point on the door.

Molded Door Specifications

STYLE	HEIGHT	SURFACE	PAGE	STICKING	TOP RAIL	LOCK RAIL	BOTTOM RAIL	MANUFACTURER
MADDOX - 1 PANEL SQUARE TOP	6/8	SMOOTH	14	CRAFTSMAN	4-3/4"	---	8-1/4"	STEVES
MONTGOMERY - 2 PANEL SQUARE TOP	6/8	SMOOTH	15	CRAFTSMAN	4-3/4"	7"	11-1/8"	STEVES
MONTGOMERY - 2 PANEL SQUARE TOP	8/0	SMOOTH	15	CRAFTSMAN	4-3/4"	7"	11-1/8"	STEVES
CAMBRIAN - 2 PANEL SQUARE TOP	6/8	SMOOTH	16	COVE & BEAD	4-1/4"	7"	8-3/8"	STEVES
CAMBRIAN - 2 PANEL SQUARE TOP	7/0	SMOOTH	16	COVE & BEAD	6-1/4"	7"	10-3/8"	STEVES
CAMBRIAN - 2 PANEL SQUARE TOP	8/0	SMOOTH	16	COVE & BEAD	4-7/16"	7"	8-3/8"	STEVES
CONNELLY - 2 PANEL ROUND TOP	6/8	SMOOTH	17	COVE & BEAD	5-1/4"	4-3/16"	8-3/8"	STEVES
CONNELLY - 2 PANEL ROUND TOP	7/0	SMOOTH	17	COVE & BEAD	7-1/4"	4-3/16"	10-3/8"	STEVES
CONNELLY - 2 PANEL ROUND TOP	8/0	SMOOTH	17	COVE & BEAD	5-1/4"	4-1/4"	8-3/8"	STEVES
SANDHURST - 2 PANEL ROUND TOP PLANK	6/8	SMOOTH	18	OVOLO	4-3/8"	7"	9-7/8"	STEVES
SANDHURST - 2 PANEL ROUND TOP PLANK	7/0	SMOOTH	18	OVOLO	6-3/8"	7"	11-7/8"	STEVES
SANDHURST - 2 PANEL ROUND TOP PLANK	8/0	SMOOTH	18	OVOLO	4-3/8"	7"	9-7/8"	STEVES
CAMDAL - 2 PANEL ARCH TOP	6/8	TEXTURED	19	COVE & BEAD	5"	3-3/4"	9"	STEVES
CRAYBURN - 3 PANEL SQUARE TOP	6/8	SMOOTH	20	CRAFTSMAN	4-5/8"	---	8-15/16"	STEVES
CRAYBURN - 3 PANEL SQUARE TOP	7/0	SMOOTH	20	CRAFTSMAN	6-5/8"	---	10-15/16"	STEVES
KEYSTONE - 4 PANEL SQUARE TOP	6/8	SMOOTH	21	COVE & BEAD	4-1/4"	6-3/4"	8-3/8"	STEVES
KEYSTONE - 4 PANEL SQUARE TOP	7/0	SMOOTH	21	COVE & BEAD	6-1/4"	6-3/4"	10-3/8"	STEVES
KEYSTONE - 4 PANEL SQUARE TOP	8/0	SMOOTH	21	COVE & BEAD	5-1/4"	6-3/4"	8-3/8"	STEVES
ROCHELE - 5 PANEL SQUARE TOP	6/8	SMOOTH	22	COVE & BEAD	4-1/2"	---	8-1/2"	STEVES
ROCHELE - 5 PANEL SQUARE TOP	7/0	SMOOTH	22	COVE & BEAD	6-1/2"	---	10-1/2"	STEVES
ROCHELE - 5 PANEL SQUARE TOP	8/0	SMOOTH	22	COVE & BEAD	4-5/8"	---	10-1/8"	STEVES
CONMIVO - 5 PANEL SQUARE TOP	6/8	SMOOTH	23	STEP	6-1/2"	---	10-3/4"	STEVES
CONMIVO - 5 PANEL SQUARE TOP	7/0	SMOOTH	23	STEP	8-1/2"	---	12-3/4"	STEVES
COLBURN - 6 PANEL SQUARE TOP	6/8	SMOOTH	24	COVE & BEAD	4-1/8"	6-7/8"	8-1/4"	STEVES
COLBURN - 6 PANEL SQUARE TOP	7/0	SMOOTH	24	COVE & BEAD	6-1/8"	6-7/8"	10-1/4"	STEVES
COLBURN - 6 PANEL SQUARE TOP	8/0	SMOOTH	24	COVE & BEAD	5-1/16"	6-7/8"	8-7/16"	STEVES
COLBURN - 6 PANEL SQUARE TOP	6/8	TEXTURED	25	COVE & BEAD	4-1/4"	6-7/8"	8-1/4"	STEVES
COLBURN - 6 PANEL SQUARE TOP	7/0	TEXTURED	25	COVE & BEAD	6-1/4"	6-7/8"	10-1/4"	STEVES
COLBURN - 6 PANEL SQUARE TOP	8/0	TEXTURED	25	COVE & BEAD	4-1/4"	6-7/8"	8-1/4"	STEVES

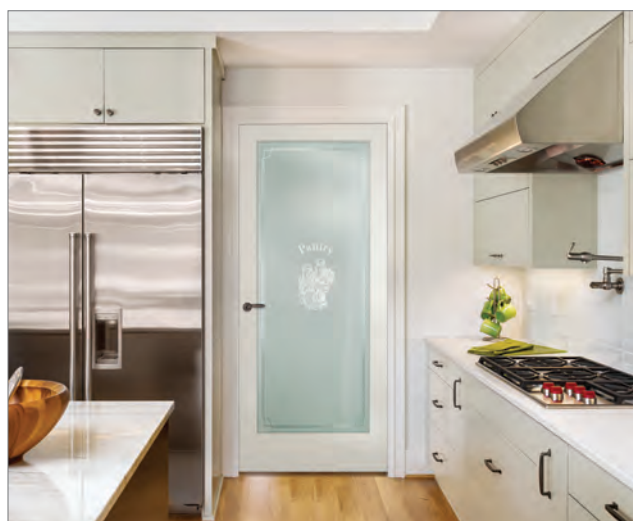


Visit the Reeb® Learning Center for education on choosing the proper door unit, new products, and what product options are available.

Visit the Reeb Learning Center at **learn.reeb.com**



A learning center for everything door related.



Primed Stile & Rail Catalog


For a more authentic look, view our Primed Stile and Rail Doors catalog at **reeb.com/catalogs/**



Interior Stile & Rail Catalog


There is a unique warmth and sophistication that can only be found in real wood. View our interior wood stile and rail options at **reeb.com/catalogs/**

 **Bethlehem, PA**
1000 Maloney Cir.
Bethlehem, PA 18015
(800) 862-8622 voice
(800) 772-7332 fax

 **Barclay, MD**
1315 Goldsboro Rd.
Barclay, MD 21607
(800) 825-8331 voice
(800) 331-9387 fax

 **Mocksville, NC**
346 Bethel Church Rd.
Mocksville, NC 27028
(800) 642-0886 voice
(800) 618-0620 fax

 **Providence, RI**
19 Business Park Dr.
Smithfield, RI 02917
(800) 343-5703 voice
(800) 388-5979 fax

 **Syracuse, NY**
7475 Henry Clay Blvd.
Liverpool, NY 13088
(800) 422-5224 voice
(800) 531-7332 fax



PART# REEBFM21

VERSION 1.1.0