

shilohTM

C A B I N E T R Y





Cabinetry is a significant part of your home. More than just a practical item for storage, cabinets are a key centerpiece in the design of a home. Shiloh Cabinetry features a seemingly endless array of choices in styles and finishes, while offering many innovative accessories to make life simpler. Because we stay ahead of trends, you are sure to find the look that elevates your home to another level.

CONTENTS

2.....	paint finishes
4.....	stain finishes
7.....	gallery
18.....	door styles
22.....	overlay and inset options
24.....	specialty finishes
26.....	decorative wood hoods
27.....	furniture vanities
IBC.....	construction

COVER

color
wood species
door style

EVERGREEN FOG
MAPLE
NEW HAVEN



color
wood species
door style

HARBOR
AMERICAN POPLAR
HARTFORD

PAINT

Color is everything, and painted finishes provide limitless possibilities, which is why Shiloh Cabinetry offers so many choices. Our diverse collection of standard paint colors is only the beginning. For those with a particular color in mind, our custom paint program lets you choose from the entire Sherwin Williams' palette of paint colors. Visit your local retailer for more details.

arctic	polar	eggshell	light french gray
soft white	beige	amazing gray	mindful gray
repose gray	upward	unusual gray	dovetail gray
niebla azul	slate tile	outer space	urbane bronze
clary sage	evergreen fog	naval	hale navy
billiard green	pewter green	iron ore	black

HIGHLIGHT OPTIONS ON PAINT

Shiloh also offers an additional finish technique on paint. Available on most paint colors, our highlight option adds an extra level of character for a more antiqued appearance. Variation of intensity is common and expected with highlight techniques.

café highlight	slate highlight
----------------	-----------------



color
wood species
door style

POLAR & NATURAL
MAPLE & WALNUT
SQUARE FLAT

STAIN

The beauty of wood is showcased with our carefully selected palette of stains. Our staining process enhances the various wood species that we offer, resulting in a beautifully finished piece of furniture for your home. When you add a glaze or highlight to one of our stains, you add an extra layer of depth and a change to the color tone, for even more possibilities. From traditional colors to modern interpretations, you are sure to find the right finish.

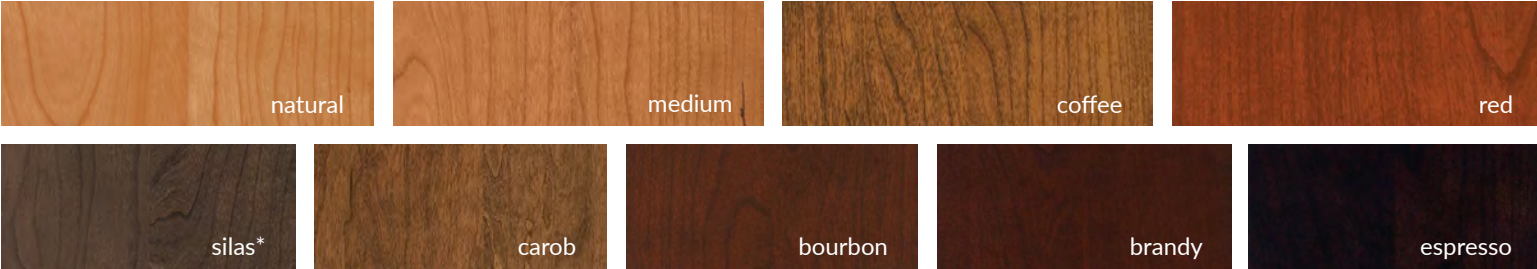
Maple



Alder



Cherry



Walnut



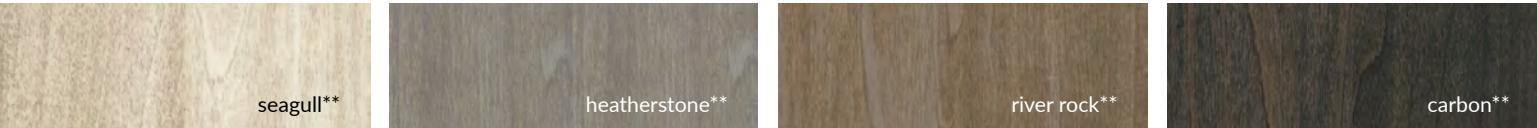
Red Oak



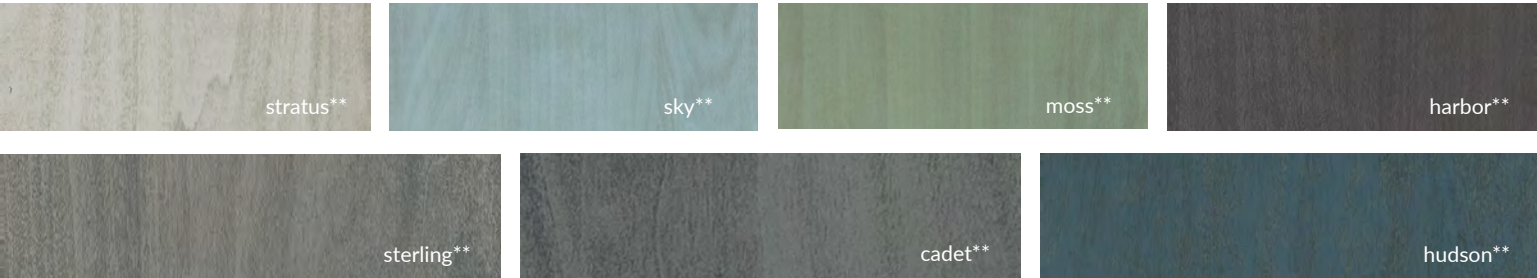
Hickory



Select Poplar



American Poplar



STAIN

White Oak, Rift Cut White Oak & Quarter-Sawn White Oak



GLAZE AND HIGHLIGHT OPTIONS ON STAIN

By choosing a glaze or highlight, you add even more character to the finish. With several options of glaze or a subtle highlight, our hand-wiped process adds a layer of color that changes the underlying stain for a deeper, richer appearance. As this is a hand-applied technique, variation in the amount and location of glaze material will vary from piece to piece and within the same piece. Variation adds to the character and should be expected.





color
wood species
door style

FLAGSTONE (AGED)
QUARTER -SAWN WHITE OAK
GREENSBORO





color
wood species
door style

SOFT WHITE
MAPLE
SAVANNAH



color
wood species
door style

POLAR & NATURAL
MAPLE & QUARTER SAWN WHITE OAK
HANOVER







color
wood species
door style

POLAR W/SLATE H.L. & CADET
MAPLE & AMERICAN POPLAR
SQUARE RAISED





color
wood species
door style

ARCTIC
MAPLE
ASPEN





color
wood species
door style

ARCTIC & NAVAL
MAPLE
HANOVER

DOOR STYLES



Asherville
natural
walnut



Aspen
cashmere w/mocha glaze
maple



Beaded Century
autumn w/black glaze
red oak



Bradford
taupe
maple



Bristol
stratus
american poplar



Charleston
white sands (aged)
alder



Dalton
sterling
american poplar



Essex
dovetail gray
maple



Glenbrook
clary sage (olde world)
maple



Greensboro
arctic w/café highlight
maple



Hamlin
iron ore
maple



Hanover
flagstone
rift cut white oak



Hartford
carbon
select poplar



Heritage
walnut w/black glaze
rustic alder



Kendall
bourbon
cherry



Lancaster
cotton
alder



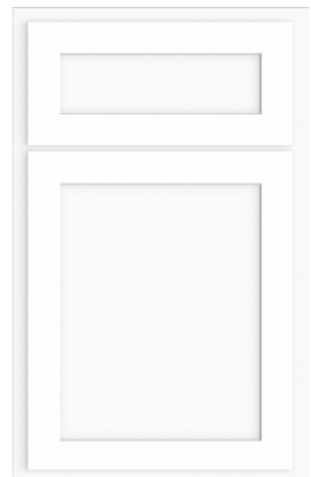
Landes
silas w/graphite highlight
alder



Manchester
spice w/black glaze
maple



Malibu
whitewash
rift cut white oak



Malibu-M1
Arctic
1 Piece MDF



Metropolitan
unusual gray
maple



Montgomery
cayenne
maple



Napa
hudson
maple



Napa-M1
Evergreen Fog
1 Piece MDF

DOOR STYLES



New Haven
braun
quarter sawn white oak



Oxford
beige (olde world)
maple



Oxford w/Sculpted DF
bourbon w/van dyke glaze
cherry



Portland
natural w/mocha glaze
rustic alder



Richmond
polar w/slate h.l.
maple



Savannah
seagull
select poplar



Shelby
eggshell w/slate highlight
maple



Scottsdale
Whitewash
White Oak



Scottsdale-M1
Slate Tile
1 Piece MDF



Somerset
moss
red oak



Square Flat
harbor
red oak



Square Raised
sky
american poplar



Statesville
clay
red oak



Summit
spice w/black glaze
maple



Ward
naval
maple



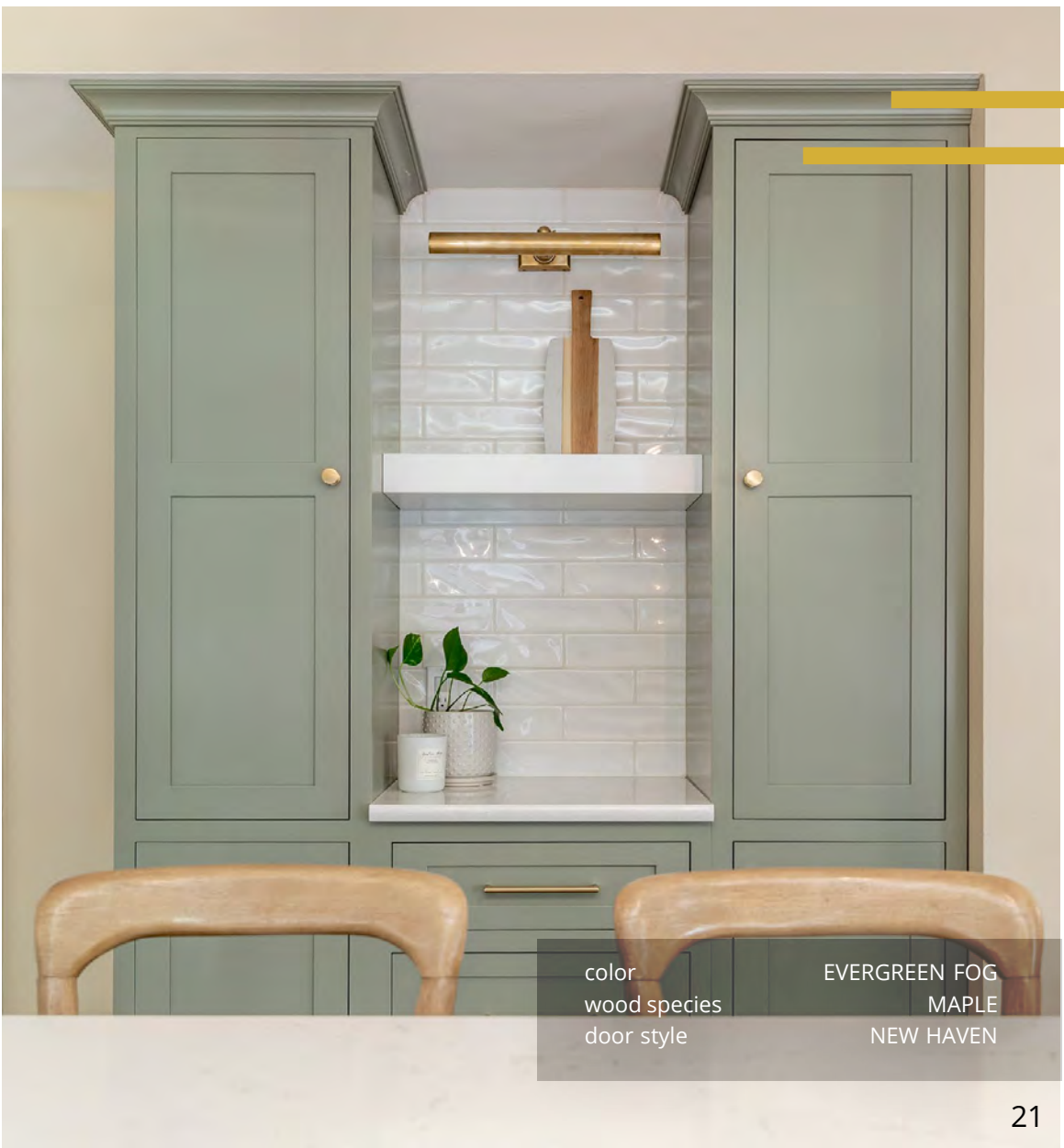
Wilmington
heatherstone
select poplar



Wilmington w/Slab DF
dusk
red oak



Windsor
coffee w/black glaze
cherry



color
wood species
door style

EVERGREEN FOG
MAPLE
NEW HAVEN

DOOR OVERLAYS & INSET OPTIONS

Shiloh Cabinetry offers the ultimate in flexibility with five types of framed cabinetry to combine with our great collection of door styles and finishes. With most Shiloh door styles available in any of the overlay or inset options below, just select your favorite door and finish and combine it with an overlay or inset cabinet style. Whether your kitchen design style suits overlay or inset, Shiloh has you covered.

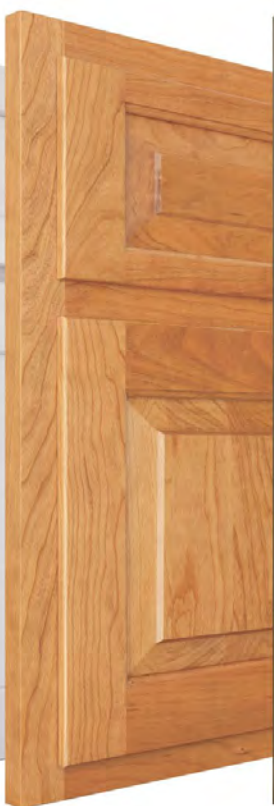
Standard Overlay



Full Overlay



3/8" Inset



Flush Inset



Beaded Inset



VISIT US ONLINE

Visit us at shilohcabinetry.com to view our complete photo gallery featuring Shiloh cabinetry. You can also explore our large selection of finishes, learn about the construction of our cabinets, and find out where to buy Shiloh. All of this and more is just a click away.



color
woodspecies
door style

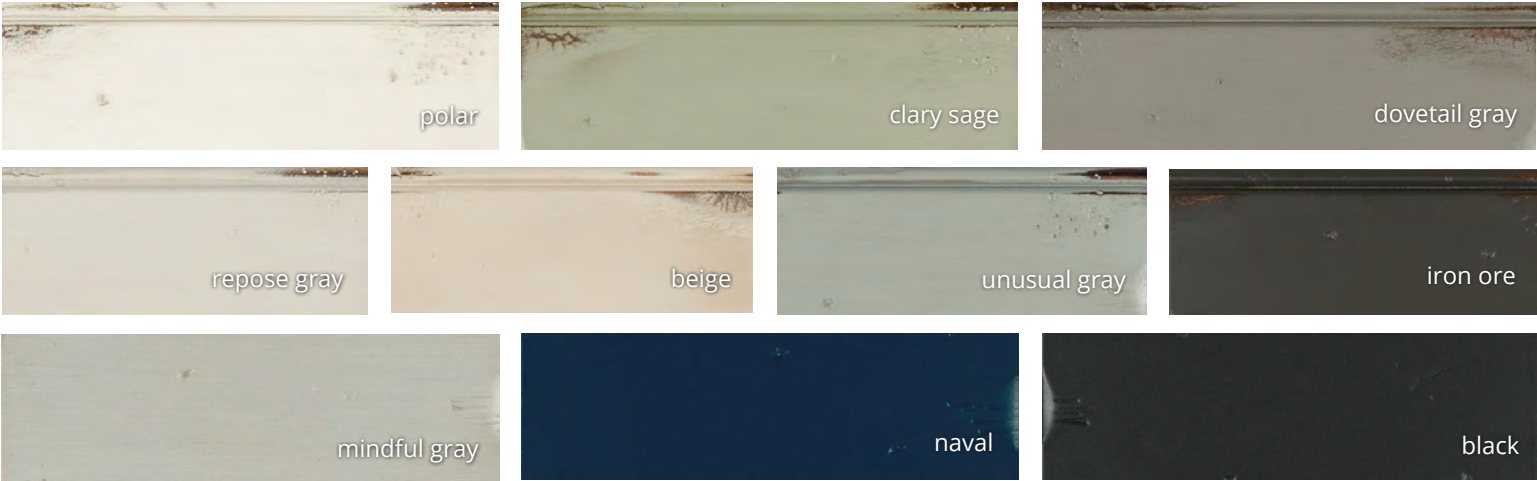
MOSS & COTTON
AMERICAN POPLAR & ALDER
HANOVER

SPECIALTY FINISHES

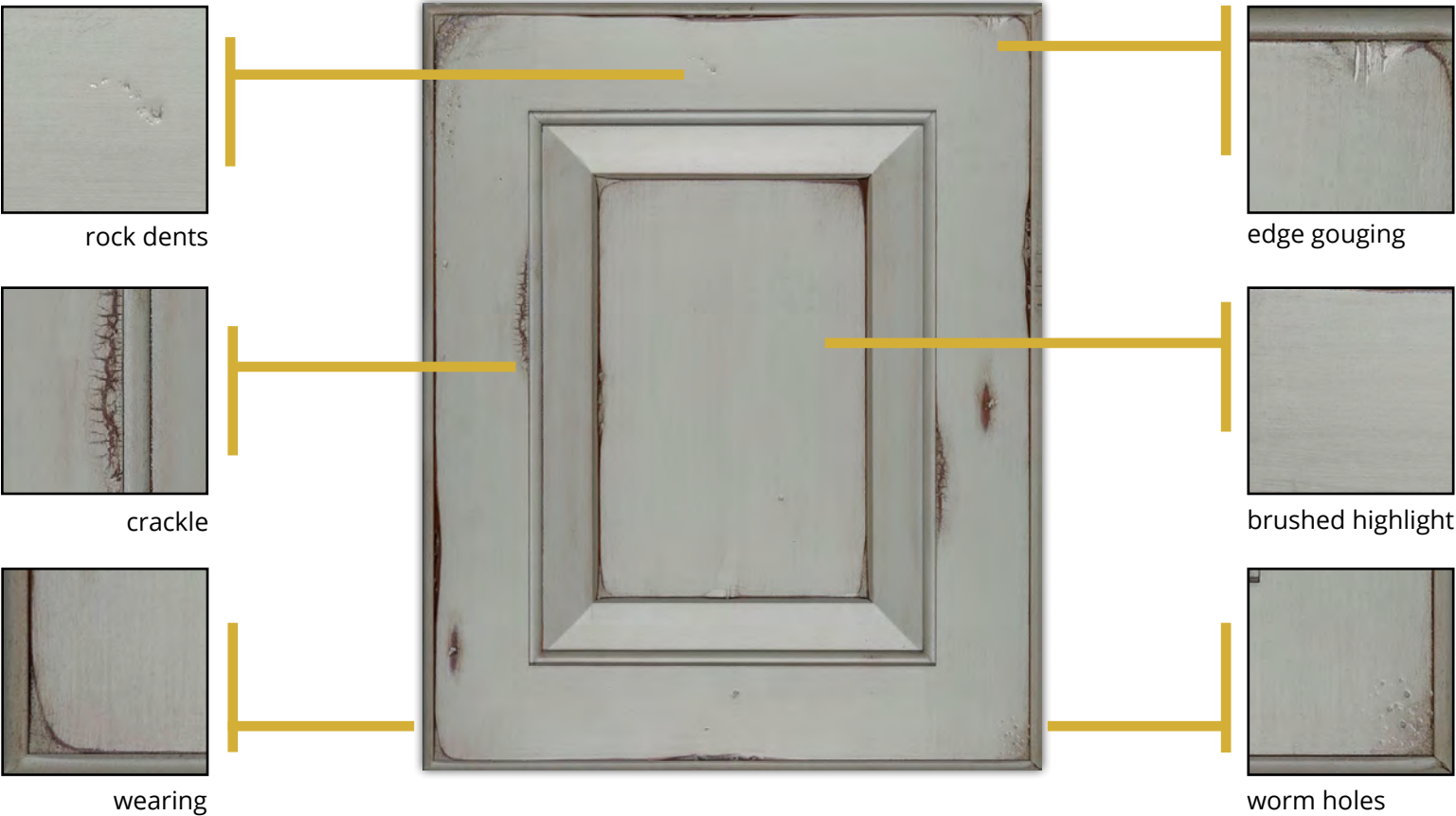
OLDEWORLD

Olde World is a painted finish, hand-distressed to simulate an aged and heavily worn appearance. The Olde World finish features a random combination of some, or all of, the following finish techniques: Worm holes, crackle, edge and panel gouging, rock dents, wearing, brushed highlight and more. Olde World is available on a select number of standard paint colors and on most wood species.

FINISHES



OLDE WORLD FINISH TECHNIQUES



AGED

The Aged Technique is a predetermined selection of numerous finish techniques to create a worn and aged appearance. The techniques possible are: worm holing, edge and panel gouging, wearing, and rock dents. The level of "Aging" is very random and inconsistent from piece to piece. The Aged Technique can be applied to all wood species (excludes Select Poplar) on any stain or paint color.

AGED FINISH TECHNIQUES



DECORATIVE WOOD HOODS

Range Hood 48

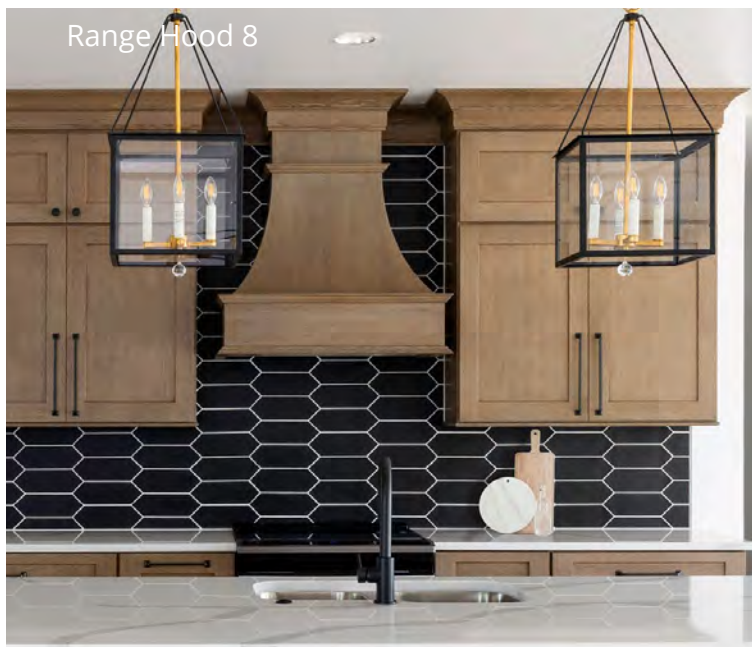


As the centerpiece of most kitchens, the range hood should be functional and beautiful. Shiloh has one of the most extensive wood hood offerings in the industry. With more than 40 unique styles, flexible sizing and all of Shiloh's finish options, our hoods make a statement in any kitchen. Our hoods are built by our own craftsmen and have been carefully engineered for appeal, functionality, and ease of installation.

Range Hood 36



Range Hood 8



Range Hood 57



FURNITURE VANITIES

Shiloh's furniture vanities feature custom styling and access to our wide array of finishes. Each style features a specific construction method and is built by one of our expert craftsmen. Choose from a multitude of unique styles in single or double bowl configurations. With multiple sizes, door styles and finishes available, our furniture vanities are a simple way to customize a bathroom.



Vanity Tall Custom 12



Vanity Tall Custom 5



Vanity Tall Custom 3



Vanity Tall Custom 28

KITCHEN CABINET COMPANIES AREN'T ALL THE SAME. MAKE SURE YOU PICK ONE THAT HAS A POSITIVE IMPACT ON THE ENVIRONMENT.

A recent study by Hanley-Wood found that environmental sustainability is one of the top reasons cited when selecting cabinets



KITCHEN CABINET MANUFACTURERS ASSOCIATION,
ENVIRONMENTAL STEWARDSHIP PROGRAM (ESPI).
ALL PRODUCTS IMPACT THE ENVIRONMENT
FOR ESP PROGRAM CRITERIA, VISIT KCMA.ORG

RESPONSIBLE PROCESS RESOURCE MANAGEMENT:

Cabinet manufacturers are checked to ensure they are dealing with wastes in responsible, sustainable ways and that they have a comprehensive recycling program in place.



ENVIRONMENTAL STEWARDSHIP:

Cabinet manufacturers are checked to ensure they have a written policy stating their commitment to environmental quality and that they attempt to ensure their vendors also engage in environmentally sustainable practices.



COMMUNITY ENGAGEMENT:

Cabinet manufacturers are examined to ensure they demonstrate community involvement and observe all federal, state and local environmental regulations.



AIR QUALITY:

Cabinets are inspected to ensure they meet safe emission standards for formaldehyde and other hazardous air pollutant levels.



SUSTAINABLE PRODUCT RESOURCE MANAGEMENT:

Cabinet manufacturers are investigated to ensure they are purchasing materials from reputable companies with sustainable forestry programs.

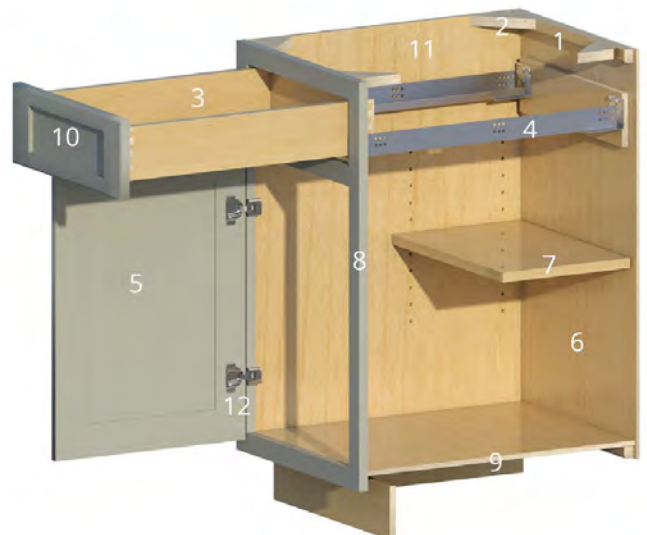


To earn the KCMA Environmental Stewardship Program Certification Seal, companies need to score 80 out of a possible 110 points in these categories:

For more information, visit www.kcma.org.

Shiloh Cabinetry's construction is an example of the commitment to long-term durability. Our cabinets feature quality components and construction methods throughout. We even operate our own testing lab to check the integrity of the finished products used to build our cabinets. Compare our cabinet construction against the competition and you will see why Shiloh stands out against the rest.

1. Solid wood hanging rail for secure fastening to the wall
2. Solid wood corner blocks in base cabinets add strength and stability
3. 5/8" hardwood dovetail drawer standard (3/4" hardwood dovetail available)
4. Guides are Blum TANDEM edge 7/8" extension with integrated BLUMOTION soft closing mechanism (optional Blum TANDEM full extension guides with integrated BLUMOTION soft closing mechanism)
5. Solid wood door (except painted and Metropolitan, which uses partial or full MDF construction)
6. Durable and easy to clean material
7. 3/4" plywood adjustable shelving with solid metal shelf clips
8. 1 1/2" wide solid wood frames
9. 3/8" plywood bottom and top (on wall cabinets)
10. Catalyzed conversion varnish topcoat that is smooth, very durable, and resistant to most household chemicals
11. 1/2" plywood sides with 1/4" wood veneer (stained) or 1/4" MDF (painted) applied on finished ends
12. Blum 6-way adjustable, soft-close, concealed hinges in standard or full overlay and flush or beaded inset (3/8" partial inset uses knife hinge that does not soft-close)



Construction and product specifications subject to change without notice and may vary from information shown above.

Pictured on Back: Polar on Maple and Natural on Quarter Sawn White Oak using Hanover Door

shilohTM

CABINETS

shilohcabinetry.com



Kitchen Cabinet Manufacturers Assoc.
Environmental Stewardship Program
All Products Impact the Environment
For ESP Program Criteria, Visit kcmas.org

Manufactured by W. W. Wood Products, Inc.
A family owned company

Due to limitations in printing or changes in manufacturing, the finishes, products, and/or specifications shown may not be accurately represented or may no longer be available. Visit a retailer to view samples and confirm availability.



LIT-SFLB 1/24