



**KUIKEN BROTHERS COMPANY INC.**  
RESIDENTIAL & COMMERCIAL BUILDING MATERIALS *Since 1912*

# WOOD TRUSS SYSTEMS

EFFICIENT, VERSATILE, AND STRONG SOLUTIONS

FOR RESIDENTIAL & COMMERCIAL APPLICATIONS



[WWW.KUIKENBROTHERS.COM](http://WWW.KUIKENBROTHERS.COM)





# Why Choose Wood Trusses for Your Next Project?

## Efficiency Meets Versatility

Wood trusses provide a powerful combination of efficiency, versatility, and cost-effectiveness, making them an ideal choice for both light commercial and residential projects.


Wood trusses offer the following benefits.

- **Design Freedom:** Wood trusses support complex designs and expansive open spaces without compromising structural integrity.
- **Speed & Precision:** Trusses are pre-engineered and manufactured to precise specifications, allowing for faster installation and reduced labor costs.
- **Cost Savings:** Reduce material waste, lower labor costs, and eliminate on-site cutting errors with preassembled trusses.
- **Proven Strength:** Engineered to national standards, wood trusses are designed to handle a wide range of loads and conditions, ensuring a strong and reliable structure for years to come.
- **Ease of Integration:** The open web design simplifies the installation of plumbing, electrical, and HVAC systems, making trusses a practical choice for any building type.



**KUIKEN BROTHERS COMPANY INC.**  
RESIDENTIAL & COMMERCIAL BUILDING MATERIALS *Since 1912*

WWW.KUIKENBROTHERS.COM



# Kuiken Brothers Will Guide You

through the following critical factors before you order your wood truss system:

- **Accurate Design & Engineering:** We will ensure the truss design aligns with project requirements and is engineered for all load conditions.
- **Site Access & Logistics:** We will confirm site accessibility for delivery and provide adequate space for storing and handling trusses.
- **Installation Crew Review:** Jobsite discussion to ensure your crew is familiar with truss installation, bracing, and safety protocols.
- **Building Code Compliance:** Ensure truss design meets all relevant building codes and obtain necessary permits and approvals.
- **Ease of Integration:** The open web design simplifies the installation of plumbing, electrical, and HVAC systems, making trusses a practical choice for any building type.

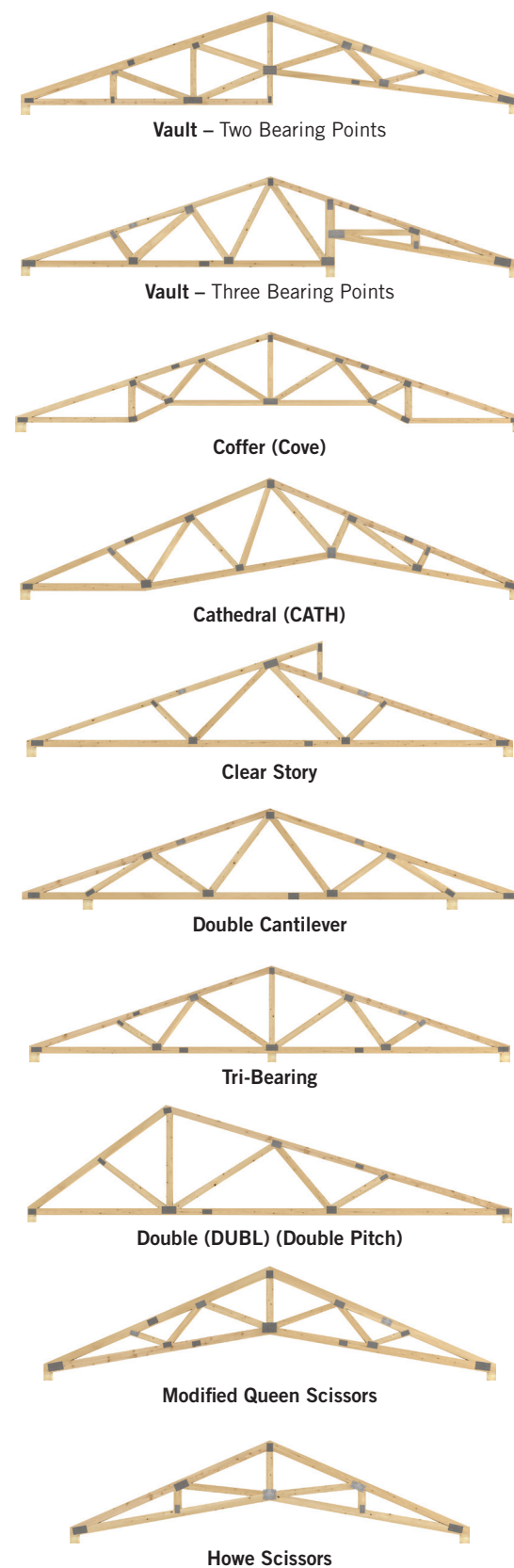
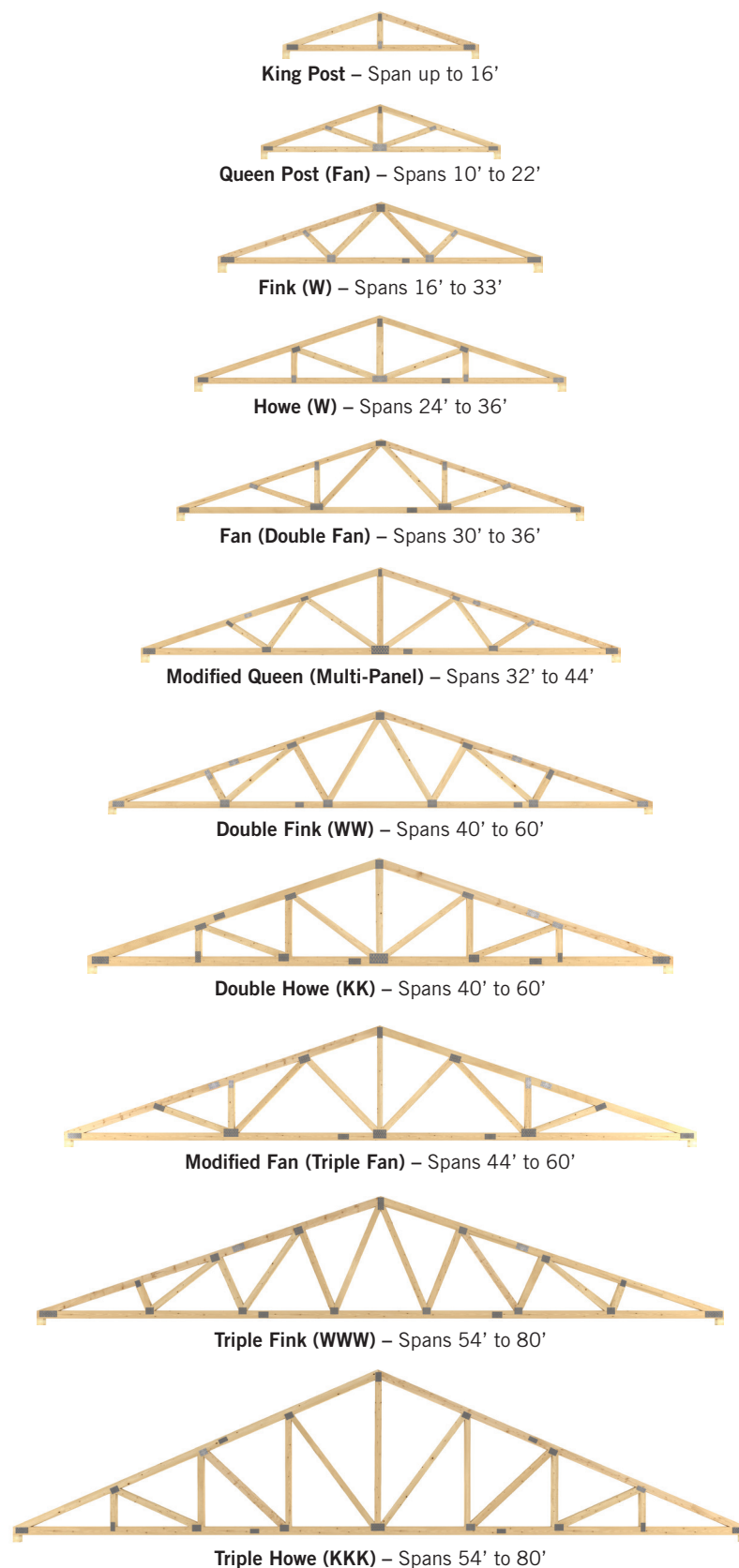


**KUIKEN BROTHERS COMPANY INC.**  
RESIDENTIAL & COMMERCIAL BUILDING MATERIALS *Since 1912*

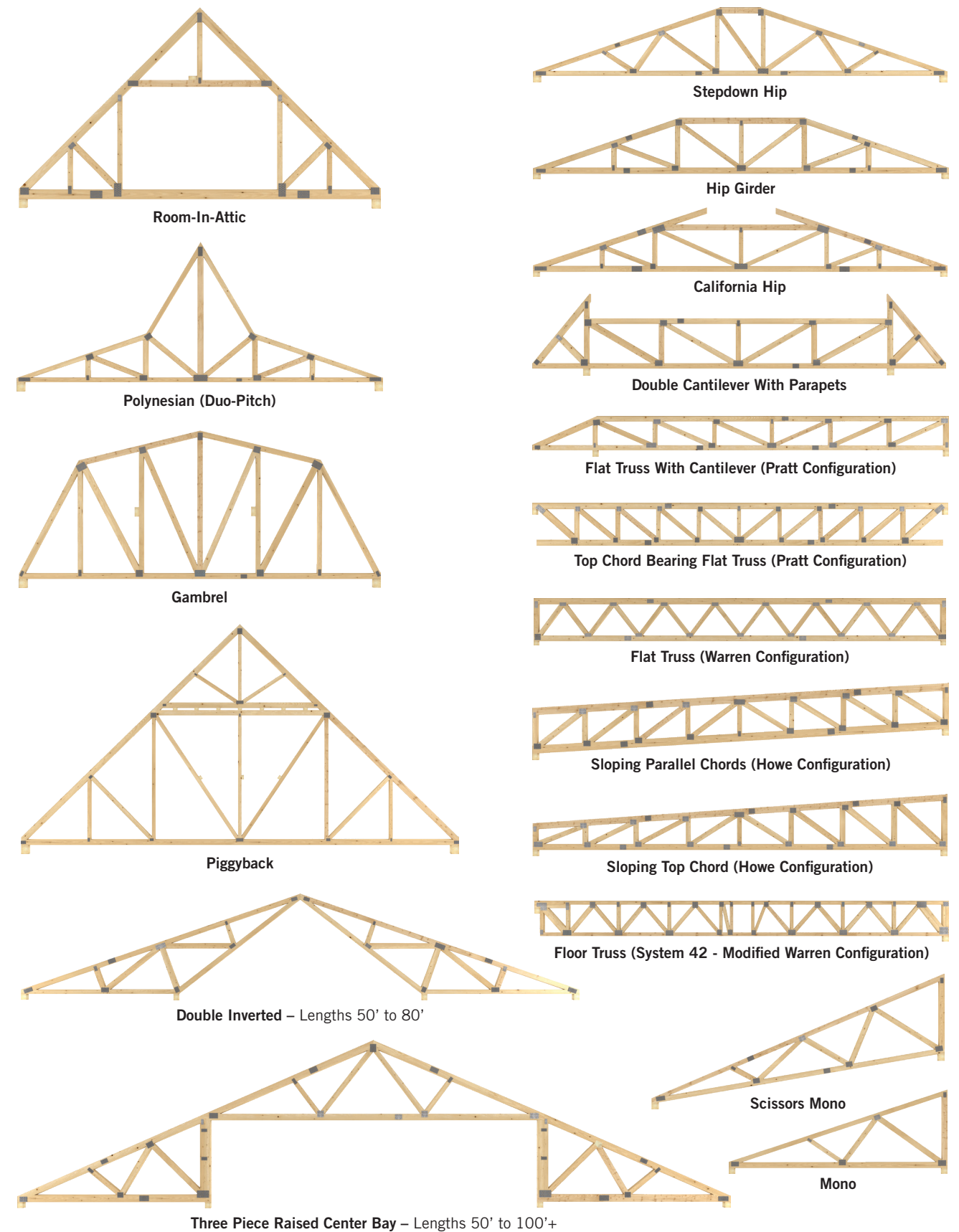
WWW.KUIKENBROTHERS.COM



# TYPICAL TRUSS CONFIGURATIONS

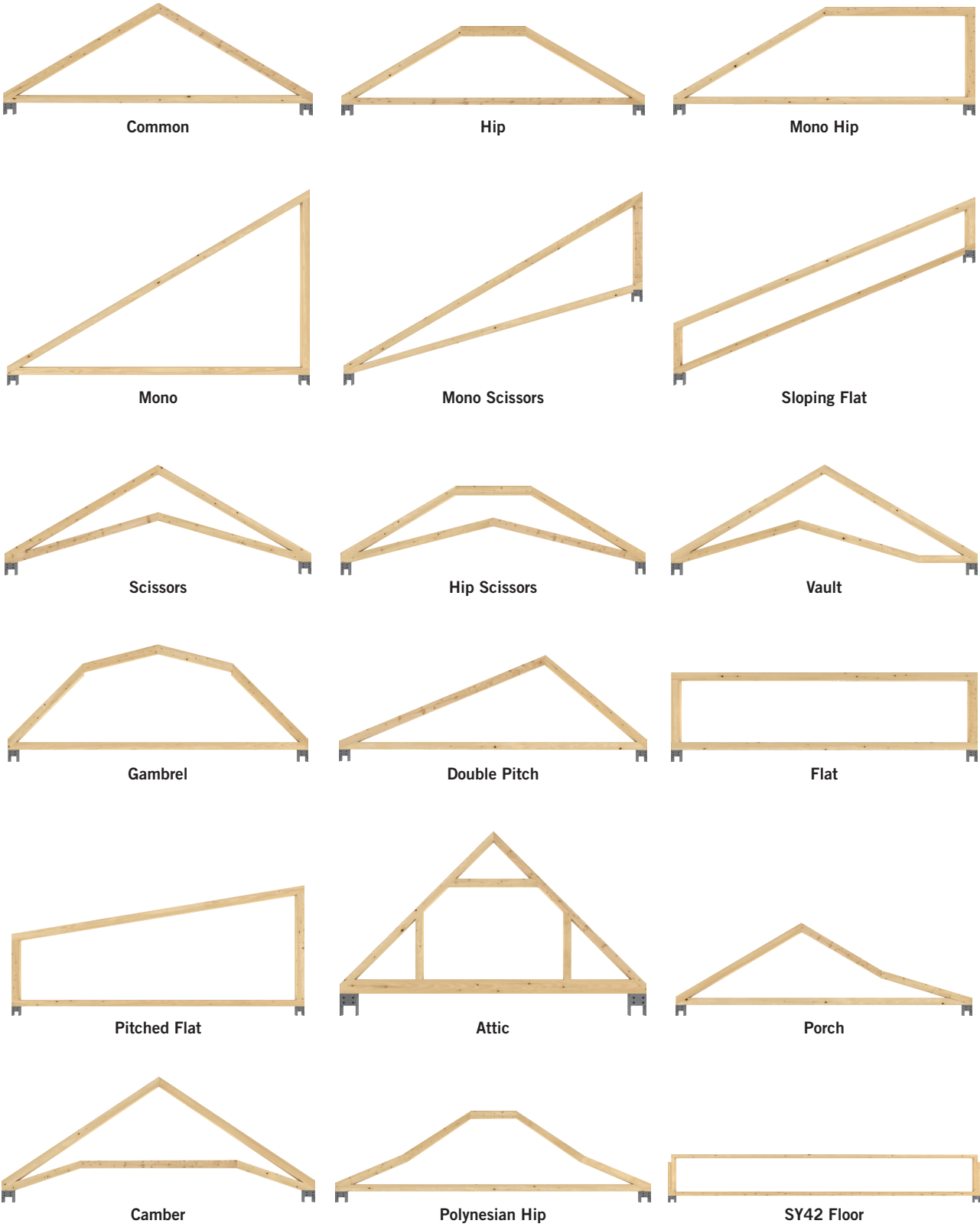


# TYPICAL TRUSS CONFIGURATIONS



# TYPICAL TRUSS SHAPES

The outside profile of your truss can take on just about any shape you can imagine.  
Some of the more common truss shapes appear below.



# ADDITIONAL PRODUCTS & SERVICES

## DIMENSIONAL LUMBER

#2 & Better Green Doug Fir  
Pressure Treated Lumber  
Fire Retardant Lumber

## ENGINEERED LUMBER

Boise Cascade AJS/ BCI I-Joist  
Boise Cascade Versa-Lam  
Boise Cascade Rim Board  
Boise Cascade VersaStud Engineered Studs  
Roof & Floor Trusses  
Wall Panels

## BOARDS, PATTERN & SPECIALTY LUMBER

Kleer PVC Boards  
Windsor One Primed Pine  
TruExterior Trim & Siding  
#2 & C&Btr White Pine  
STD& BTR & A&Btr Cedar  
Utility & Btr Spruce Boards & Bridging  
Oak, Cherry, Poplar, Maple and  
Sapele Mahogany Boards  
Wainscoat, Beadboard, Shiplap Paneling  
Red Cedar Shakes & Shingles  
White Cedar Undercourse  
Primed Fiberboard  
OSHA Approved Scaffold Planks  
Cedar Closet Lining

## PLYWOOD & PANELS

AC Plywood  
AB Marine Plywood  
CD Fir Sheathing  
MDO Panels  
Square Edge Underlayment  
3/4" T&G Fir Underlayment  
Fir T-111 Panels  
SYP Plybead  
MDF Beadboard  
Patriot RevBead Beadboard Panel  
Commodity 7/16" OSB  
Huber BluePlus, Advantech, ZipSystem,  
Zip R & Exacor  
Kleer PVC Panels  
Melamine Shelving  
Lightweight Fiberboard Panels  
Fire Retardant CD  
Pressure Treated Underlayment  
Lauan & Bending Lauan Plywood  
Oak, Cherry, Maple & Sapele Mahogany Plywood,  
Prefinished Maple Plywood  
(Birch Plywood) Domestic & Imported  
Hardboard & Pegboard Panels  
Homasote Panels  
Sound Deadening Boards

## FLOORING

Iron Woods IPE Porch Flooring  
Aeratis PVC Flooring  
Meranti Porch Flooring  
Fir Porch Flooring & Stepping  
Select Oak Flooring & Stepping  
Pine Flooring & Stepping (C Select)

## WINDOWS, DOORS & MISCELLANEOUS MILLWORK

Andersen Windows & Doors  
Andersen Architectural Collection  
(A-Series, E-Series)  
Marvin Signature Windows & Doors  
Marvin Elevate & Essential Windows & Doors  
United Vinyl Windows  
Velux Skylights  
Interior Doors - TruStile, REEB Millwork  
Primed Stile & Rail Doors, Simpson  
Exterior/ Entry Doors - KML, ThermoTru,  
TruStile, Signature Door  
Door Slabs & Prehung Doors  
Commercial Steel & Hollow Metal Doors  
Cavity Slider Pocket Door Frames  
Stair Parts  
Marwin Attic Stairs  
Bessler Fire Rated Attic Stairs  
Shutters  
HB&G Columns & Porch Posts  
Larson Storm Doors

## DECKING PRODUCTS

Trex Decking  
Signature  
Lineage  
Transcend  
Select  
Enhance  
Trex Deck Fasteners  
Trex RainEscape  
Iron Woods Ipe & Garapa Sustainable  
Tropical Hardwoods  
Iron Woods Ipe Deck Tiles  
Meranti Decking  
Cedar Decking  
Premium Pressure Treated Decking  
Lattice Panel

## RAILING SYSTEMS

Trex Transcend Rail  
Trex Signature Rail  
Trex Select Rail  
Trex Select T-Rail  
Trex ADA Rail  
Trex Lighting  
RDI Endurance Rail  
Wild Hog Rail  
Feeney CableRail & DesignRail  
Pressure Treated & Cedar Railing

## EXTERIOR BUILDING MATERIALS

DuPont Tyvek Homewrap /Weatherization  
Henry Blueskin VP100/160  
Henry WeatherSmart D, EaveGuard  
Henry Fortiflash Fusion  
Nichigo G-Tapes  
Quickrete Concrete Mixes  
Lally Columns  
Reinforcing Rods  
Fiber Form Tubes  
Rockwell Window Wells

## MOULDING

KB Classical & Modern Craftsman Poplar Moulding  
Primed Finger Joint Pine Moulding  
Ultralite MDF Moulding  
Flexible, Curved & Radius Moulding  
Custom Hardwood Mouldings  
Kleer PVC Mouldings & Postwraps  
Corner Blocks & Plinth Blocks

## HARDWARE & FASTENERS

Schlage, Baldwin, Emtek, Rocky Mountain  
Commercial Hardware  
Nails, Coil Nails, Screws  
Simpson Strong-Tie  
Starborn Fasteners & ProPlugs  
Caulks, Sealants, Fillers  
Power and Hand Tools  
Jobsite and Surface Protection

## KITCHEN & BATH CABINETRY

Stock, Semi-Custom, Full Custom Options  
In-House Designers  
Countertops

*Kuiken Brothers Cabinetry Showrooms:  
Emerson, NJ, Succasunna, NJ, Wantage, NJ, Warwick, NY*

## INTERIOR BUILDING MATERIALS

Drywall  
Shaftwall Panels  
Certainteed SilentFX  
Permabase Tile Backer  
Gypsum Tile Backer  
Steel Studs 25, 20, 18 Gauge  
Rockwool AFB Comfortbatt & Comfortboard  
XPS Foam & Insulation Panels  
Tuff-R Insulation  
Certainteed Ceiling Tile & Grid  
FRP Panels & Accessories

## COMMERCIAL BUILDING MATERIALS

*In-stock at Garfield, Succasunna, Emerson &  
Newark Locations*

Ceiling Systems  
Suspension Systems  
Drywall  
Joint Compounds  
Metal Studs  
Insulation  
Wall Panels  
Homasote  
Fasteners & Adhesives  
Boom Truck Services (Up to 8 story)

## COMMERCIAL DOORS, FRAMES & HARDWARE

Hollow Metal Doors & Frames  
Wood Doors (Various Veneers & Finishes)  
Commercial Hardware (ASSA ABLOY, Schlage,  
Falcon, Von Duprin)

## SPECIAL ORDERS

If you don't see it here, just ask. We have a  
strong network of suppliers and can source  
just about anything.





**KUIKEN BROTHERS COMPANY INC.**  
RESIDENTIAL & COMMERCIAL BUILDING MATERIALS *Since 1912*



[WWW.KUIKENBROTHERS.COM](http://WWW.KUIKENBROTHERS.COM)

#### HEADQUARTERS

Fair Lawn, NJ  
6-02 Fair Lawn Ave.  
Fair Lawn, NJ 07410  
Tel 201.796.2082  
Office Fax 201.703.9230

#### RESIDENTIAL BUILDING MATERIALS

Fair Lawn, NJ  
Tel 201.796.2082  
Emerson, NJ  
Tel 201.262.6666  
Roseland, NJ  
Tel 973.226.5700

Wantage, NJ  
Tel 973.875.5106  
Succasunna, NJ  
Tel 973.968.7700  
Warwick, NY  
Tel 845.986.2255

Midland Park, NJ  
Tel 201.652.1000  
Newark, NJ  
Tel 973.638.7200

#### KITCHEN & BATH SHOWROOMS

Emerson, NJ  
Tel 201.262.6666  
Succasunna, NJ  
Tel 973.584.2444  
Warwick, NY  
Tel 845.986.2255

#### COMMERCIAL BUILDING MATERIALS

Garfield, NJ  
Tel 973.772.0044  
Succasunna, NJ  
Tel 973.968.7700  
Emerson, NJ  
Tel 201.262.6666  
Newark, NJ  
Tel 973.638.7200