





THE OUTSIDE COMPANY™



## Get outside and live your best life

We realize that inside each of us, there is an Outside Side™ — a side begging to get out there, to be outgoing, to break out of our same old inside routines and to outdo ourselves with our outdoor space. At Barrette Outdoor Living, we help your Outside Side run free with products that constantly beckon you out there. We know there is an Outside Side in everyone and we're firm believers that it's our best side because we're The Outside Company™.

### Your vision

Your home is more than just a space. It's where you raise a family. It's where friends gather, and seasons come and go. It is a living, breathing picture of your life. With our diverse and flexible range of outdoor living solutions, Barrette Outdoor Living can help you bring any vision to life.

### Our mission

Barrette Outdoor Living strives to be the best in product design and innovation, inspired by those who work with and for us to create superior outdoor living solutions both professionals and homeowners demand. At the core of our business is a place where integrity, ingenuity and skill meet.





## Our promise to you

At Barrette Outdoor Living, we believe in making things right. We proudly stand behind our products by providing dedicated support, superior customer service and product warranties that feature some of the most comprehensive coverage in the industry. With decades of experience behind us, we are quite confident in the craftsmanship and quality of our products, but we also realize things happen. If that thing happens, we promise to make it right within the constraints of our warranties.



**Leading the way**



**Crafting quality**



**Making it right**



**Being responsible**

Barrette Outdoor Living can help make your outdoor vision a reality. Proud to be an American manufacturer, we produce and distribute fencing, railing, decking and complementary outdoor products. **To learn more, visit us at [barretteoutdoorliving.com/warranty](https://barretteoutdoorliving.com/warranty)**

# BARRETTE OUTDOOR LIVING RAILING

With versatile options available, Barrette Outdoor Living vinyl, aluminum and steel railing products make a great addition to any deck, patio or porch. Our products offer ease of installation, are designed with style and engineered for long-lasting durability.

Traditional vinyl railing — available in two styles — is easy to maintain and available in several colors to complement any home.

Contemporary, rust-resistant aluminum railing blends naturally into its surroundings — showcasing yards and maintaining open views.

The ultimate in strength and featuring modern finishes, steel railing offers timeless styling and is a great option for both residential and commercial applications.

Our wide selection of options ensure you'll find the perfect complement to any outdoor space and budget.







## Table of Contents

### RAILING

VERSARAIL® ALUMINUM RAILING	6
CONCORD™ STEEL RAILING	12
BELLA PREMIER SERIES VINYL RAILING	16
SELECT SERIES™ VINYL RAILING	22

### COMPLEMENTARY ACCENTS

VINYL ADA HANDRAIL	28
ALUMINUM ADA HANDRAIL	32
LIGHTING	36
DECORATIVE SCREEN PANELS	40
LATTICE	44

# VERSARAIL® ALUMINUM RAILING

Rust-resistant VersaRail Aluminum Railing, with its premium powder coating, features a sleek design that pairs beautifully with any application — residential or commercial. Available with two top rail profiles, VersaRail also offers an adapter that easily allows a deck board to be added to create a flat, "cocktail rail." Optional color matched Post Extensions are available to add 65" of height to existing 2½" railing posts and feature hooks to easily string café lights.





## PRODUCT BENEFITS

- Balusters and rails lock together from the inside out using patented system
- Rust-proof
- Easy to install
- 6' and 8' level rail kit lengths
- 6' and 8' stair rail kit lengths
- 36" and 42" level rail heights
- Code compliant
- Assembled in the USA

## HOMEOWNER BENEFITS

- Premium powder coating provides maximum durability
- Product undergoes advanced weather testing
- Matching gate kit
- Compatible with LED lighting
- Easy to maintain
- Transferrable Limited Lifetime Warranty

## DESIGN VERSATILITY

- Clean, seamless finish
- Deck board adapter easily creates flat, "cocktail rail"
- Adapter available to convert railing from 36" height to 42" height for commercial applications
- 2 top rail profiles
- 3 colors



### PROLOCK®

ProLock is a locking strip that secures railings by connecting them from the inside out to provide a clean design.



### SOLARGUARD®

SolarGuard is a material composition that provides fade resistance\* so that your outdoor living products will look good for years to come.

\*Does not apply to white vinyl products



# VERSARAIL® ALUMINUM RAILING

## CLASSIC TOP ALUMINUM RAIL KITS

Description	Matte Black	Matte Bronze	White
6' x 36" Classic Top Aluminum Rail Kit with Square Balusters	<b>73043025</b>	<b>73043032</b>	<b>73043039</b>
8' x 36" Classic Top Aluminum Rail Kit with Square Balusters	<b>73043026</b>	<b>73043033</b>	<b>73043040</b>
6' x 42" Classic Top Aluminum Rail Kit with Square Balusters	<b>73043027</b>	<b>73043034</b>	<b>73043041</b>
8' x 42" Classic Top Aluminum Rail Kit with Square Balusters	<b>73043028</b>	<b>73043035</b>	<b>73043042</b>
6' x 36" Classic Top Aluminum Rail Stair Kit with Square Balusters	<b>73043029</b>	<b>73043036</b>	<b>73043043</b>
8' x 36" Classic Top Aluminum Rail Stair Kit with Square Balusters	<b>73043030</b>	<b>73043037</b>	<b>73043044</b>
8' x 42" Classic Top Aluminum Rail Stair Kit with Square Balusters	<b>73043031</b>	<b>73043038</b>	<b>73043045</b>

Brackets are included in all kits.

### Dimensions

6' level & stair rails (69½" actual size)

8' level & stair rails (93½" actual size)

36" & 42" finished heights (with 2" bottom space)



Classic Top Rail



¾" Square Balusters

## CLASSIC TOP ALUMINUM RAIL BRACKETS\*

Description	Matte Black	Matte Bronze	White
Classic Top Aluminum Rail Level Bracket Kit (2 top and 2 bottom brackets and covers)**	<b>73043068</b>	<b>73043073</b>	<b>73043077</b>
Classic Top Aluminum Rail Stair Bracket Kit (2 top and 2 bottom brackets and covers)	<b>73043069</b>	<b>73043074</b>	<b>73043078</b>
Classic Top Aluminum Rail Angle Bracket Kit (2 top and 2 bottom brackets and covers)	<b>73043071</b>	<b>73043076</b>	<b>73043079</b>

\*Level and Stair brackets are included in all kits; extra brackets are for use when cutting a rail section to create two shorter sections.

\*\*Support foot included in Level Bracket Kits only.

Brackets shown with Classic Top Rail Covers. Covers will match the top rail profile of the kits.



Level Brackets



Stair Brackets



Angle Brackets

## ALUMINUM DECK BOARD ADAPTER

Description	Matte Black	Matte Bronze	White
6' Aluminum Rail Deck Board Adapter for Classic Top Rail Kits	<b>73043058</b>	<b>73043060</b>	<b>73032045</b>
8' Aluminum Rail Deck Board Adapter for Classic Top Rail Kits	<b>73043059</b>	<b>73043061</b>	<b>73032041</b>



Deck Board Adapter for use with Classic Top Rail Kits



The Deck Board Adapter creates a "cocktail" style rail by allowing a deck board to be mounted to the top rail.



## CAMBRIDGE TOP ALUMINUM RAIL KITS

Description	Matte Black	Matte Bronze	White
6' x 36" Cambridge Top Aluminum Rail Kit with Square Balusters	<b>73043652</b>	<b>73045633</b>	<b>73043650</b>
8' x 36" Cambridge Top Aluminum Rail Kit with Square Balusters	<b>73043657</b>	<b>73045634</b>	<b>73043656</b>
6' x 36" Cambridge Top Aluminum Rail Stair Kit with Square Balusters	<b>73043653</b>	<b>73045636</b>	<b>73043651</b>
8' x 36" Cambridge Top Aluminum Rail Stair Kit with Square Balusters	<b>73045635</b>	<b>73045637</b>	<b>73045638</b>

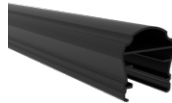
Brackets are included in all kits.

### Dimensions

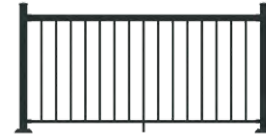
6' level & stair rails (69½" actual size)

8' level & stair rails (93½" actual size)

36" & 42" finished heights (with 2" bottom space)



Cambridge Top Rail



¾" Square Balusters

## CAMBRIDGE TOP ALUMINUM RAIL BRACKETS\*

Description	Matte Black	Matte Bronze	White
Cambridge Top Aluminum Rail Level Bracket Kit (2 top and 2 bottom brackets and covers)**	<b>73045645</b>	<b>73045648</b>	<b>73045651</b>
Cambridge Top Aluminum Rail Stair Bracket Kit (2 top and 2 bottom brackets and covers)	<b>73045646</b>	<b>73045649</b>	<b>73045652</b>
Cambridge Top Aluminum Rail Angle Bracket Kit (2 top and 2 bottom brackets and covers)	<b>73045647</b>	<b>73045650</b>	<b>73045653</b>

\*Level and Stair brackets are included in all kits; extra brackets are for use when cutting a rail section to create two shorter sections.

\*\*Support foot included in Level Bracket Kits only.



Level Brackets



Stair Brackets



Angle Brackets

## 2½" X 2½" ALUMINUM STANDARD POSTS

Description	Matte Black	Matte Bronze	White
2½" x 2½" x 39" Post – Residential	<b>73043046</b>	<b>73043050</b>	<b>73043054</b>
2½" x 2½" x 45" Post – Residential	<b>73043047</b>	<b>73043051</b>	<b>73043055</b>
2½" x 2½" x 45" Heavy-Duty Post – Commercial	<b>73043048</b>	<b>73043052</b>	<b>73043056</b>
2½" x 2½" x 60" Heavy-Duty Post – Commercial	<b>73043049</b>	<b>73043053</b>	<b>73043057</b>
2½" x 2½" x 65" Post Extension	<b>73050520</b>	<b>73050522</b>	<b>73050521</b>

Standard posts include post, connected base plate, sandwich plate, trim ring and post cap.

## 2½" X 2½" ALUMINUM FASCIA POSTS

Description	Matte Black	Matte Bronze	White
2½" x 2½" x 45" Post	<b>73045503</b>	<b>73045505</b>	<b>73045504</b>
2½" x 2½" x 52" Post	<b>73045500</b>	<b>73045502</b>	<b>73045501</b>

Fascia posts include post and post cap. Fascia mounting brackets sold separately.



2½" x 2½" Posts  
(39", 45" and 60" heights)



2½" x 2½"  
Post Extension



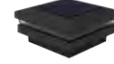
2½" x 2½" Fascia Posts  
(45" and 52" heights)

## ALUMINUM POST CAPS

Description	Matte Black	Matte Bronze	White
2½" x 2½" Contemporary Solar Down Light Post Cap	<b>73044935</b>	<b>73044953</b>	<b>73044936</b>
2½" x 2½" Contemporary Solar Light Post Cap	<b>73044954</b>	<b>73044941</b>	<b>73044955</b>



2½" Contemporary Solar Down Light Post Cap



2½" Contemporary Solar Light Post Cap

## 4¼" X 4¼" ALUMINUM POST/SLEEVES

Description	Matte Black	Matte Bronze	White
4¼" x 4¼" x 39" Post/Sleeve (requires Post Mounting Kit if using as post)	<b>73041378</b>	<b>73041376</b>	<b>73041379</b>
4¼" x 4¼" x 45" Post/Sleeve (requires Post Mounting Kit if using as post)	<b>73041382</b>	<b>73041380</b>	<b>73041383</b>
4¼" x 4¼" x 108" Porch Post (requires 2 Post Mounting Kits for top and bottom)	<b>73041374</b>	<b>73041372</b>	<b>73041375</b>

4¼" x 4¼" x 108" post sleeves can be used as porch columns (5,000 lb load capacity); two mounting kits will be needed in this application.



4¼" x 4¼" Posts  
(39", 45" and 108" heights)

## 4¼" X 4¼" ALUMINUM POST/SLEEVE ACCESSORIES

Description	Matte Black	Matte Bronze	White
4¼" x 4¼" Post Mounting Kit (includes 1 mounting plate and 2-Piece Trim Ring)	<b>73041362</b>	<b>73041360</b>	<b>73041363</b>
4¼" x 4¼" 2-Piece Trim Ring	<b>73041370</b>	<b>73041368</b>	<b>73041371</b>
4¼" x 4¼" Flat Post Cap	<b>73041366</b>	<b>73041364</b>	<b>73041367</b>
4¼" Solar Light Post Cap	<b>73050526</b>	<b>73050528</b>	<b>73050527</b>
4¼" LED Light Post Cap (0.80W)	<b>73050523</b>	<b>73050525</b>	<b>73050524</b>



4¼" Post Mounting Kit



4¼" 2-Piece Trim Ring



4¼" Flat Post Cap



4¼" Solar Light Post Cap



4¼" LED Light  
Post Cap

## ALUMINUM FASCIA BRACKETS

Description	Matte Black	Matte Bronze	White
Fascia Mount Mid Bracket	<b>73045488</b>	<b>73045490</b>	<b>73045489</b>
Fascia Mount Outside Corner Bracket	<b>73045491</b>	<b>73045493</b>	<b>73045492</b>
Fascia Mount Insider Corner Bracket	<b>73045494</b>	<b>73045496</b>	<b>73045495</b>
Fascia Mount Juliette Bracket Kit	<b>73045497</b>	<b>73045499</b>	<b>73045498</b>
Fascia/Juliette Mount Spacer*	<b>73050297</b>		

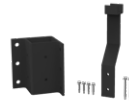
\*Only necessary when Juliette application is using a fascia mid bracket and post.



Fascia Mount Mid Bracket



Fascia Mount Outside  
Corner Bracket



Fascia Mount Inside  
Corner Bracket



Fascia Mount  
Juliette Bracket Kit



Fascia/Juliette  
Mount Spacer



## ALUMINUM 2-TO-3 RAIL ADAPTER

Description	Matte Black	Matte Bronze	White
6' Rail Adapter	<b>73050438</b>	<b>73050442</b>	<b>73050440</b>
8' Rail Adapter	<b>73050439</b>	<b>73050443</b>	<b>73050441</b>



6' Rail Adapter



8' Rail Adapter



¾" Square Balusters with  
2-to-3 Rail Adapter

## ALUMINUM 2-TO-3 RAIL BRACKETS

Description	Matte Black	Matte Bronze	White
2-to-3 Rail Level Bracket Kit (set of 4 – 2 top, 2 bottom)	<b>73050444</b>	<b>73050445</b>	<b>73050446</b>
2-to-3 Rail Angle Bracket Kit (set of 4 – 2 top, 2 bottom)	<b>73050447</b>	<b>73050448</b>	<b>73050449</b>



2-to-3 Rail Level Bracket Kit



2-to-3 Rail Angle Bracket Kit

## ALUMINUM GATE KITS

Description	Matte Black	Matte Bronze	White
36" Aluminum Gate Kit (purchase rail kit separately to complete your gate)	<b>73043062</b>	<b>73043064</b>	<b>73043066</b>
42" Aluminum Gate Kit (purchase rail kit separately to complete your gate)	<b>73043063</b>	<b>73043065</b>	<b>73043067</b>



Gate Kit includes: 2 uprights, cross braces and hardware (2 hinges, 1 latch). Rail kit sold separately.

## ACCESSORIES

Description	
NEW! BracketPro™ Installation Jig – for use with 2½" and 4¼" posts	<b>73053555</b>

Easily locates holes on posts to install brackets and provides level railing without having to measure or center brackets manually. For use with 2", 2½" and 4¼" posts.

**NEW!**



BracketPro



## ALUMINUM TOUCH-UP PAINT

Description	Matte Black	Matte Bronze	White
Aerosol Can	<b>73044481</b>	<b>73044482</b>	<b>73022328</b>
Bottle & Brush	<b>73044483</b>	<b>73044484</b>	<b>N/A</b>
Paint Pen	<b>N/A</b>	<b>N/A</b>	<b>73022351</b>

# CONCORD™ STEEL RAILING

Offering the strength of steel in a traditional and timeless style, Concord Steel Railing is a good choice for both residential and commercial installations. Available in textured matte black and hammered bronze finishes and with adapters that easily allows a deck board to be added to create a flat, "cocktail rail."





## PRODUCT BENEFITS

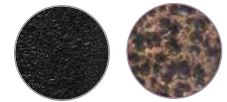
- Panels with square balusters are factory welded
- Pre-attached brackets on posts make level installation easy and ensure consistent bottom spacing
- 6', 8' and 10' level rail kit lengths
- 6' and 8' stair rail kit lengths
- 36" and 42" level rail heights
- Code compliant

## HOMEOWNER BENEFITS

- Premium powder coating provides maximum durability
- 15 Year Limited Warranty

## DESIGN VERSATILITY

- Deck board adapter easily creates flat, "cocktail rail"
- New Horizontal Rod Rail option
- 2 colors



Matte Black    Hammered Bronze



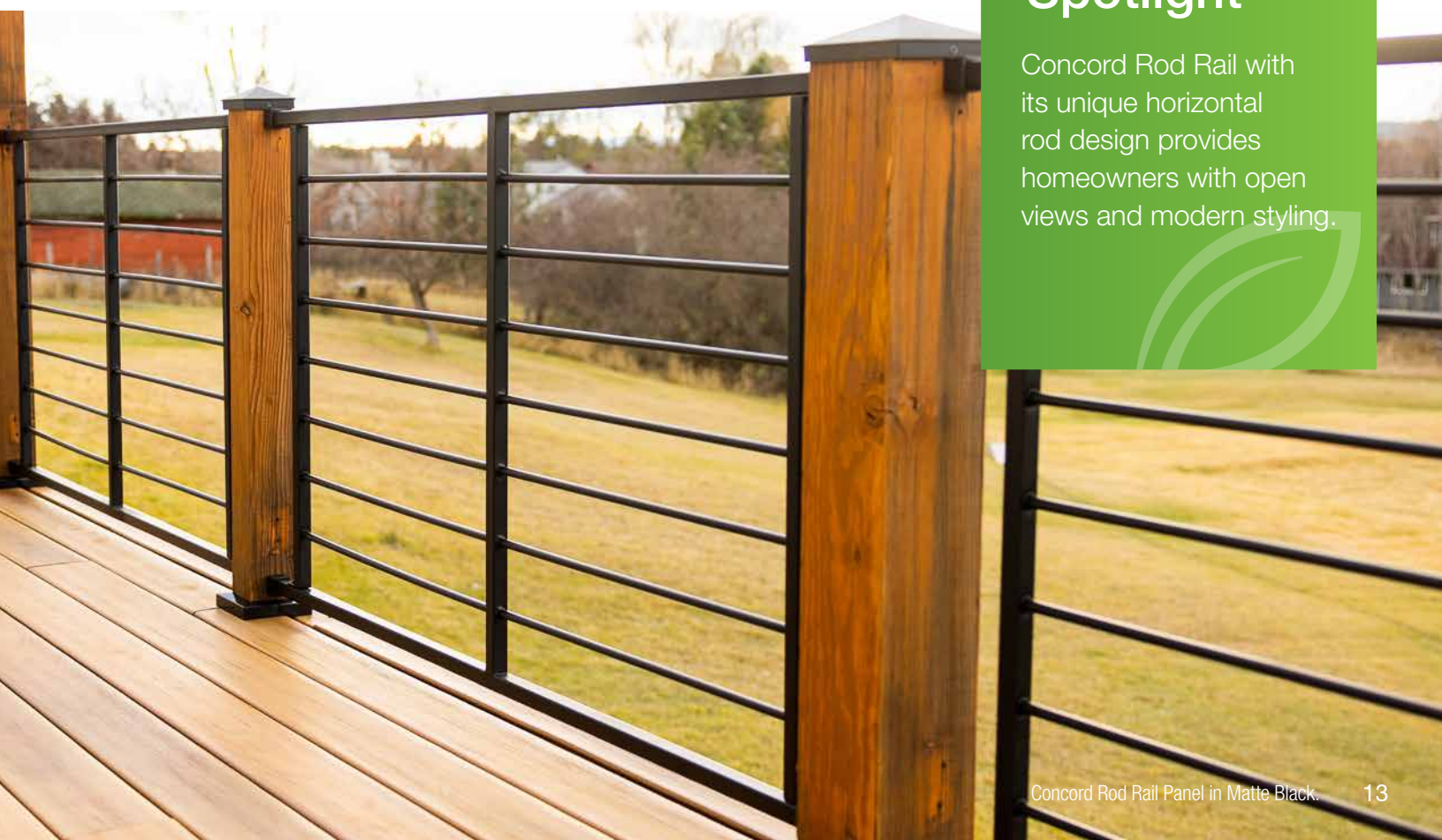
## SOLARGUARD®

SolarGuard is a material composition that provides fade resistance\* so that your outdoor living products will look good for years to come.

\*Does not apply to white vinyl products

## Product Spotlight

Concord Rod Rail with its unique horizontal rod design provides homeowners with open views and modern styling.



## STEEL RAIL LEVEL PANELS

Description	Matte Black	Hammered Bronze
6' x 34" Level Rail Panel (for finished rail height 36" to 38")	<b>73045375</b>	<b>73045380</b>
8' x 34" Level Rail Panel (for finished rail height 36" to 38")	<b>73045376</b>	<b>73045381</b>
10' x 34" Level Rail Panel (for finished rail height 36" to 38")	<b>73045377</b>	<b>73045382</b>
6' x 40" Level Rail Panel (for finished rail height 42" to 44")	<b>73045378</b>	<b>73045383</b>
8' x 40" Level Rail Panel (for finished rail height 42" to 44")	<b>73045379</b>	<b>73045384</b>

## STEEL RAIL STAIR PANELS

Description	Matte Black	Hammered Bronze
6' x 34" Stair Rail Panel (for finished rail height 36" to 38")	<b>73045385</b>	<b>73045388</b>
8' x 34" Stair Rail Panel (for finished rail height 36" to 38")	<b>73045386</b>	<b>73045389</b>
8' x 40" Stair Rail Panel (for finished rail height 42" to 44")	<b>73045387</b>	<b>73045390</b>

## ROD RAIL PANELS

Description	Matte Black	Hammered Bronze
6' x 34" Rod Rail Level Panel	<b>73050621</b>	<b>N/A</b>
8' x 34" Rod Rail Level Panel	<b>73050623</b>	<b>N/A</b>
6' x 34" Rod Rail Stair Panel	<b>73050625</b>	<b>N/A</b>
6' x 40" Rod Rail Level Panel	<b>73050622</b>	<b>N/A</b>
8' x 40" Rod Rail Level Panel	<b>73050624</b>	<b>N/A</b>
6' x 40" Rod Rail Stair Panel	<b>73050626</b>	<b>N/A</b>

### Dimensions

6' level/stair rails (71¾" actual size)

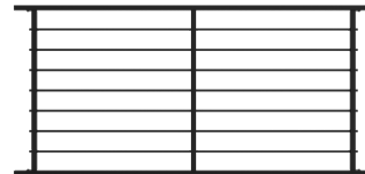
8' level/stair rails (95¾" actual size)

10' level panels (119¾" actual size)

36" (34" actual height) to 42" (40" actual height) finished heights



Level Rail Panel



Rod Rail Panel

## 2" STEEL RAIL POSTS

Description	Matte Black	Hammered Bronze
2" x 2" Mid Post (for 36" finished rail height with 2" bottom space)	<b>73045391</b>	<b>73045406</b>
2" x 2" End Post (for 36" finished rail height with 2" bottom space)	<b>73045392</b>	<b>73045407</b>
2" x 2" Corner Post (for 36" finished rail height with 2" bottom space)	<b>73045393</b>	<b>73045408</b>
2" x 2" Mid Post (for 42" finished rail height with 2" bottom space)	<b>73045394</b>	<b>73045409</b>
2" x 2" End Post (for 42" finished rail height with 2" bottom space)	<b>73045395</b>	<b>73045410</b>
2" x 2" Corner Post (for 42" finished rail height with 2" bottom space)	<b>73045396</b>	<b>73045411</b>
2" x 2" Mid Post (for 38" finished rail height with 4" bottom space)	<b>73045397</b>	<b>73045412</b>
2" x 2" End Post (for 38" finished rail height with 4" bottom space)	<b>73045398</b>	<b>73045413</b>
2" x 2" Corner Post (for 38" finished rail height with 4" bottom space)	<b>73045399</b>	<b>73045414</b>
2" x 2" x 38" Blank Post	<b>73045400</b>	<b>73045415</b>
2" x 2" x 40" Blank Post	<b>73045401</b>	<b>73045416</b>
2" x 2" x 44" Blank Post	<b>73045402</b>	<b>73045417</b>
2" x 2" x 46" Blank Post	<b>73045403</b>	<b>73045418</b>
2" x 2" x 48" Blank Post	<b>73045404</b>	<b>73045419</b>
2" x 2" x 52" Fascia Post	<b>73045405</b>	<b>73045420</b>

2" Steel Rail Posts include welded base plate, pre-mounted post top, bracket covers, 2-piece trim ring and shims.



### 3" STEEL RAIL POSTS

Description	Matte Black	Hammered Bronze
3" x 3" End Post (for 36" finished rail height with 2" bottom space)	<b>73045421</b>	<b>73045429</b>
3" x 3" Mid Post (for 36" finished rail height with 2" bottom space)	<b>73045422</b>	<b>73045430</b>
3" x 3" Corner Post (for 36" finished rail height with 2" bottom space)	<b>73045423</b>	<b>73045431</b>
3" x 3" End Post (for 36" finished rail height with 4" bottom space)	<b>73045424</b>	<b>73045432</b>
3" x 3" Mid Post (for 36" finished rail height with 4" bottom space)	<b>73045425</b>	<b>73045433</b>
3" x 3" Corner Post (for 36" finished rail height with 4" bottom space)	<b>73045426</b>	<b>73045434</b>
3" x 3" x 40" Blank Post	<b>73045427</b>	<b>73045435</b>
3" x 3" x 46" Blank Post	<b>73045428</b>	<b>73045436</b>

3" Steel Rail Posts include welded base plate, pre-mounted post top, bracket covers, 2-piece trim ring and shims.



Mid Post



Corner Post



End Post



Blank Post



Fascia Post



Fascia Post shown with brackets

### STEEL BRACKETS\*

Description	Matte Black	Hammered Bronze
Level Rail Bracket Kit (includes 2 top and 2 bottom brackets, 4 bracket covers and hardware)	<b>73045437</b>	<b>73045444</b>
Stair or Level-Angle Bracket Kit (includes 2 top and 2 bottom brackets and hardware)	<b>73045438</b>	<b>73045445</b>
Deck Top Flush Mount Bracket Kit (includes 4 flush mount brackets and hardware)	<b>73045439</b>	<b>73045446</b>
Fascia Post Brackets (includes 2 fascia post brackets)	<b>73045440</b>	<b>73045447</b>

\*If using bracketed posts, level brackets do not need to be purchased. Stair brackets are NOT included with rail panels and must be purchased separately.



Level Rail Brackets



Stair or Level-Angle Brackets



Deck Top Flush Mount Brackets



Fascia Post Brackets

### STEEL GATE OPTIONS

Description	Matte Black	Hammered Bronze
34½" W x 34" H Welded Gate Panel	<b>73045441</b>	<b>N/A</b>
Gate Ends for 34" H Panel	<b>73045442</b>	<b>73045448</b>
Gate Ends for 40" H Panel	<b>73045443</b>	<b>73045449</b>
Compact Butterfly Hinge Pair (Black aluminum)	<b>73024441</b>	
Gravity Latch (Black steel)	<b>73024440</b>	



Pre-assembled Gate Panel



Gate Ends



Compact Butterfly Hinges



Gravity Latch

### STEEL TOUCH-UP PAINT

Description	Matte Black
Aerosol Can	<b>73044481</b>
Bottle & Brush	<b>73044483</b>

# BELLA PREMIER SERIES VINYL RAILING

Bella Premier Series Vinyl Railing is made from Compositore® — a material that contains no wood or organic fibers — and provides superior resistance to moisture, mold and warping. Featuring a lightly textured, durable finish, Bella Premier Series offers a deck board adapter that creates a flat "cocktail rail." Brackets conceal fasteners for a clean finish and multiple infill styles are available.





## PRODUCT BENEFITS

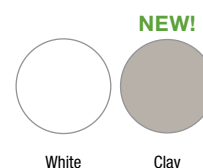
- Innovative dovetail level rail brackets allow for easy assembly
- 6', 8' and 10' level rail kit lengths
- 6' and 8' stair rail kit lengths
- 36" and 42" level rail heights
- Multiple post options available — 4" x 4", 5" x 5" and 6" x 6"
- Code compliant
- Made in the USA

## HOMEOWNER BENEFITS

- Does not warp, splinter or rot
- Matching gate kit
- Compatible with LED lighting
- Easy to maintain
- Long lasting color retention
- Transferrable Limited Lifetime Warranty

## DESIGN VERSATILITY

- Decorative detail on rails
- Bracket design hides unsightly fasteners to provide a clean, finished look
- Deck board adapter easily creates flat, "cocktail rail"
- 3 infill options
- 2 colors



### COMPOSICORE®

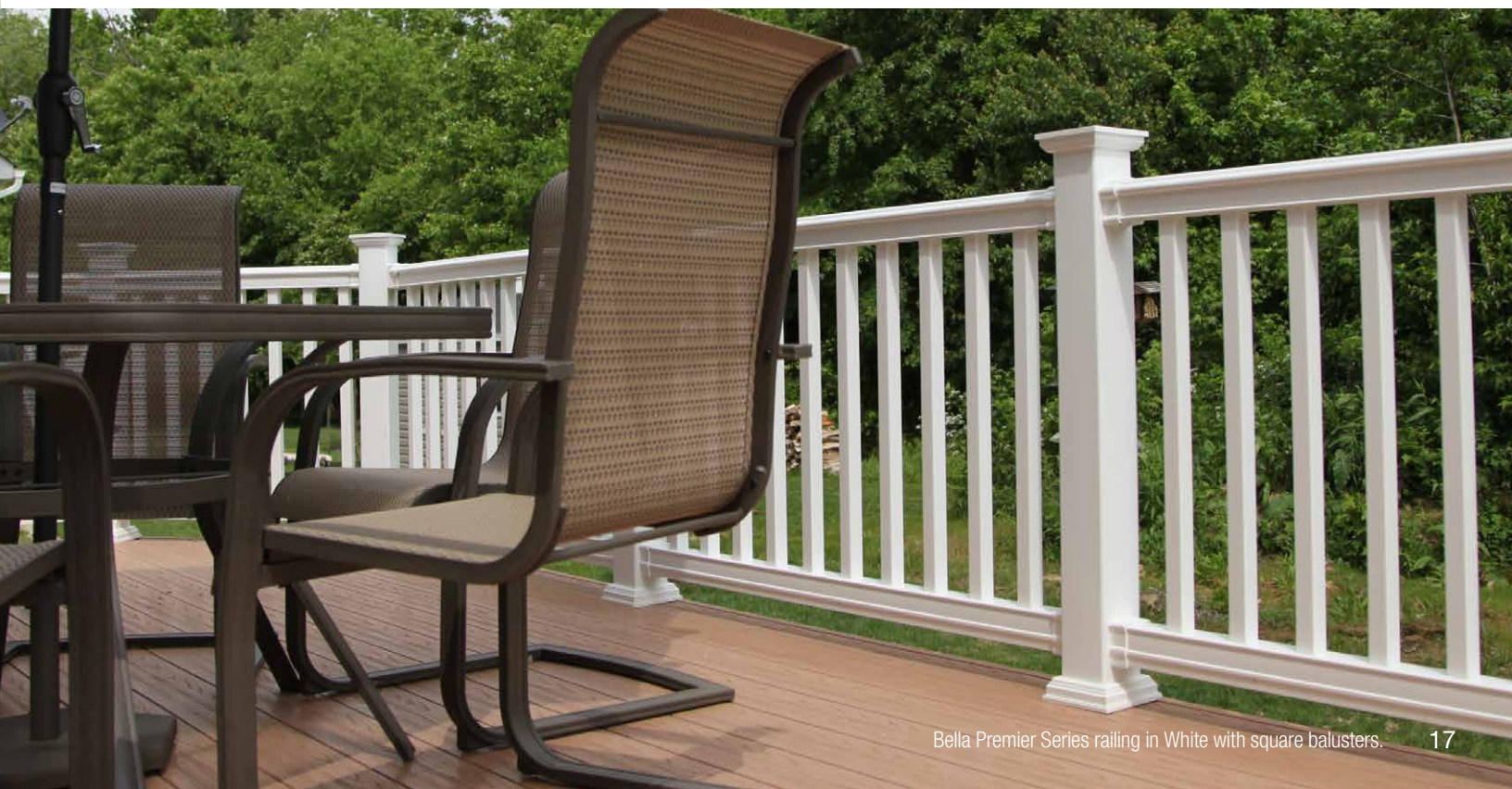
Composicore used in our railing products, contains no wood fibers, making it water resistant meaning it will not rot, splinter, warp or stain and is resistant to mold — keeping your railing beautiful for years to come.



### SOLARGUARD®

SolarGuard is a material composition that provides fade resistance\* so that your outdoor living products will look good for years to come.

\*Does not apply to white vinyl products



# BELLA PREMIER SERIES VINYL RAILING

## LEVEL RAIL KITS

Description	White	Clay
Bella Premier Series 6' x 36" Rail Kit with Square Balusters	<b>73012442</b>	<b>73053658</b>
Bella Premier Series 6' x 36" Rail Kit with Turned Balusters	<b>73012444</b>	<b>N/A</b>
Bella Premier Series 6' x 36" Rail Kit with 3/4" Black Round Aluminum Balusters	<b>73012446</b>	<b>73053659</b>
Bella Premier Series 8' x 36" Rail Kit with Square Balusters	<b>73012448</b>	<b>73053660</b>
Bella Premier Series 8' x 36" Rail Kit with Turned Balusters	<b>73012450</b>	<b>N/A</b>
Bella Premier Series 8' x 36" Rail Kit with 3/4" Black Round Aluminum Balusters	<b>73012452</b>	<b>73053661</b>
Bella Premier Series 10' x 36" Rail Kit with Square Balusters	<b>73013195</b>	<b>73053662</b>
Bella Premier Series 10' x 36" Rail Kit with Turned Balusters	<b>73013183</b>	<b>N/A</b>
Bella Premier Series 10' x 36" Rail Kit with 3/4" Black Round Aluminum Balusters	<b>73013178</b>	<b>73053663</b>
Bella Premier Series 6' x 42" Rail Kit with Square Balusters	<b>73012454</b>	<b>N/A</b>
Bella Premier Series 8' x 42" Rail Kit with Square Balusters	<b>73012456</b>	<b>N/A</b>
Bella Premier Series 10' x 42" Rail Kit with Square Balusters	<b>73013184</b>	<b>N/A</b>

Level rail kits include top and bottom rails, brackets, balusters and support feet.  
8' and 10' kits include top rail aluminum stiffener.

## STAIR RAIL KITS

Description	White	Clay
Bella Premier Series 6' x 36" Stair Kit with Square Balusters	<b>73053495</b>	<b>73053503</b>
Bella Premier Series 6' x 36" Stair Kit with Turned Balusters	<b>73053496</b>	<b>N/A</b>
Bella Premier Series 6' x 36" Stair Kit with 3/4" Black Round Aluminum Balusters	<b>73053497</b>	<b>73053504</b>
Bella Premier Series 8' x 36" Stair Kit with Square Balusters	<b>73053498</b>	<b>73053505</b>
Bella Premier Series 8' x 36" Stair Kit with Turned Balusters	<b>73053499</b>	<b>N/A</b>
Bella Premier Series 8' x 36" Stair Kit with 3/4" Black Round Aluminum Balusters	<b>73053500</b>	<b>73053506</b>
Bella Premier Series 6' x 42" Stair Kit with Square Balusters	<b>73053501</b>	<b>N/A</b>
Bella Premier Series 8' x 42" Stair Kit with Square Balusters	<b>73053502</b>	<b>N/A</b>

Stair rail kits include top and bottom rails, brackets and balusters.

### Dimensions

6' length rails (67<sup>1</sup>/<sub>8</sub>" actual size)

8' length rails (91<sup>1</sup>/<sub>8</sub>" actual size)

10' length rails (115<sup>1</sup>/<sub>8</sub>" actual size)

6' length stairs (67<sup>1</sup>/<sub>8</sub>" actual size)

8' length stairs (91<sup>1</sup>/<sub>8</sub>" actual size)

36" & 42" finished heights (with 3" bottom space)



1<sup>3</sup>/<sub>8</sub>" Square Balusters



1<sup>3</sup>/<sub>8</sub>" Turned Balusters



3/4" Black Round Aluminum Balusters

## BRACKETS\*

Description	White	Clay
Bella Premier Series Level Bracket – 4 Pc. (2 top and 2 bottom brackets)	<b>73012494</b>	<b>73053682</b>
Bella Premier Series Stair Bracket – 4 Pc. (non-adjustable – 2 top and 2 bottom brackets)	<b>73053493</b>	<b>73053494</b>
Bella Premier Series Angle Bracket – 4 Pc. (adjustable to a level angle of 45° – 2 top and 2 bottom brackets)	<b>73012498</b>	<b>73053684</b>

\*Level and Stair brackets are included in all kits; extra brackets are for use when cutting a rail section to create two shorter sections.



## DECK BOARD TOP ADAPTER

Description	White	Clay
Bella Premier Series 8' Deck Board Adapter (2 pack)	<b>73028079</b>	<b>73053685</b>

Deck board top adapters include top rail and top bracket adapters and hardware.

Bella Premier Series Deck Board Adapter fits on top of the top rail creating a flat mounting surface for your deck board.



## GATE KITS

Description	White	Clay
36" Gate Kit (for gates up to 48" wide) – 1 1/4" Square Balusters	<b>73045025</b>	<b>73053675</b>
42" Gate Kit (for gates up to 48" wide) – 1 1/4" Square Balusters	<b>73045035</b>	<b>N/A</b>
36" Gate Kit (for gates up to 48" wide) – 3/4" Black Round Aluminum Balusters	<b>73045031</b>	<b>73053677</b>
36" Gate Kit (for a gate up to 48" wide) – 1 3/8" Turned Balusters	<b>73050566</b>	<b>N/A</b>

Gate kits include top and bottom rail, seven balusters and two uprights with caps and glue.



1 1/4" Square Balusters



1 3/8" Turned Balusters

Bella Premier Series Gate Kits provide safety and containment to your project and can accommodate 36" to 48" wide openings between posts. Hinges and latches sold separately.

## GATE HARDWARE

Description	Black	White
Standard Wrap Hinge Pair	<b>73028117</b>	<b>73025512</b>
Two-Sided Locking Latch	<b>73050187</b>	<b>73050188</b>
Gravity Latch	<b>73002252</b>	<b>73025491</b>

## STRUCTURAL POSTS

Description	36"	42"
Flush Mount Post (includes steel post, post inserts, mounting plate, vinyl shims and hardware)	<b>73019022</b>	<b>73019024</b>
Thru/Fascia Mount Post (includes steel post, post inserts, mounting plate, vinyl shims and hardware)	<b>73019023</b>	<b>73019025</b>



Flush Mount Post



Thru/Fascia Mount Post

# BELLA PREMIER SERIES VINYL RAILING

## VINYL POST SLEEVES & WRAPS

Description	White	Clay
4" x 4" x 39" Traditional Post Sleeve (unit pack of 84)	<b>61109087</b>	<b>73053601</b>
4" x 4" x 39" Traditional Post Sleeve (unit pack of 22)	<b>73019260</b>	<b>N/A</b>
4" x 4" x 45" Traditional Post Sleeve	<b>61109088</b>	<b>73053602</b>
4" x 4" x 100" Traditional Post Sleeve	<b>73012479</b>	<b>N/A</b>
4" x 4" x 108" Traditional Post Sleeve	<b>61109090</b>	<b>73053603</b>
4" x 4" x 96" 4-Piece Post Wrap	<b>73018473</b>	<b>73053604</b>
4" x 4" x 120" 4-Piece Post Wrap	<b>73018007</b>	<b>73053605</b>
5" x 5" x 39" Traditional Post Sleeve	<b>73043921</b>	<b>N/A</b>
5" x 5" x 45" Traditional Post Sleeve	<b>73043922</b>	<b>N/A</b>
5" x 5" x 108" Traditional Post Sleeve	<b>73043923</b>	<b>N/A</b>
Post Inserts (for use with 5" sleeves on structural or wood 4" x 4" posts)	<b>73019139</b>	
6" x 6" x 54" Post Sleeve	<b>73018734</b>	<b>N/A</b>
6" x 6" x 108" Post Sleeve	<b>73018731</b>	<b>73053608</b>
6" x 6" x 96" 4-Piece Post Wrap	<b>73018478</b>	<b>73053606</b>
6" x 6" x 120" 4-Piece Post Wrap	<b>73018008</b>	<b>73053607</b>

4" x 4" Post Wraps work on posts  $3\frac{3}{8}" - 4\frac{1}{8}"$ .

6" x 6" Post Wraps work on posts  $5\frac{7}{16}" - 6\frac{1}{8}"$ .



Traditional Post Sleeve  
(4", 5" or 6" options)



4-Piece Post Wrap

## VINYL PORCH POSTS

Description	White	Clay
4" x 4" x 108" Square Porch Post (2,500 lbs.)*	<b>73018767</b>	<b>N/A</b>
4" x 4" x 108" Turned Porch Post (2,500 lbs.)*	<b>73018752</b>	<b>N/A</b>
5" x 5" x 108" Turned Porch Post (5,000 lbs.)*	<b>73018010</b>	<b>73053609</b>
5" x 5" x 108" Square Porch Post (5,000 lbs.)*	<b>73018769</b>	<b>N/A</b>
5" x 5" x 108" Premiere Square Porch Post (4,500 lbs.) (includes Base Mounting Kit)	<b>73047642</b>	<b>N/A</b>
5" x 5" x 108" Premiere Turned Porch Post (4,500 lbs.) (includes Base Mounting Kit)	<b>73047641</b>	<b>N/A</b>

\*Requires Base Mounting Kit (sold separately)



Square Porch Post



Premiere Square Porch Post



Turned Porch Post



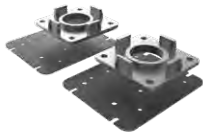
Premiere Turned Porch Post



## MOUNTING KITS FOR PORCH POSTS

Description	4" x 4"	5" x 5"
Standard Base Mounting Kit	<b>73018005</b>	<b>73018006</b>
Wind Uplift Base Mounting Kit (prevents wind uplift of up to 2,800 lbs.)	<b>73018089</b>	<b>73018090</b>

Base Mounting Kit includes top and bottom mounting plates.



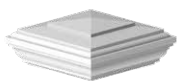
Standard Base  
Mounting Kit



Wind Uplift Base  
Mounting Kit

## VINYL POST ACCESSORIES

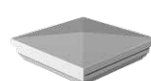
Description	White	Clay
4" x 4" Heritage Post Cap	<b>73012500</b>	<b>N/A</b>
4" x 4" Flat Post Cap	<b>73018076</b>	<b>73053668</b>
4" x 4" Elite Post Cap	<b>73018073</b>	<b>N/A</b>
4" x 4" New England Post Cap	<b>73044950</b>	<b>73053673</b>
4" x 4" Contemporary Post Cap	<b>73019233</b>	<b>N/A</b>
4" x 4" Contemporary Solar Post Cap	<b>73019234</b>	<b>73045510</b>
5" x 5" New England Post Cap	<b>73045003</b>	<b>N/A</b>
5" x 5" Flat Post Cap	<b>73003093</b>	<b>N/A</b>
5" x 5" Contemporary Post Cap	<b>73013124</b>	<b>N/A</b>
5" x 5" Contemporary Solar Post Cap	<b>73013110</b>	<b>N/A</b>
6" x 6" Elite Post Cap	<b>73018105</b>	<b>N/A</b>
6" x 6" New England Post Cap	<b>73018108</b>	<b>73018106</b>
4" x 4" Heritage Trim Ring	<b>73012503</b>	<b>73053674</b>
5" x 5" 2-Piece Trim Ring	<b>73043929</b>	<b>N/A</b>
3½" to 6½" 4-Piece Trim Ring	<b>73018131</b>	<b>73018066</b>
4½" Paintable Round Column Adapters (2 pieces for 8" columns)	<b>73019453</b>	<b>N/A</b>



Heritage Post Cap



Flat Post Cap



New England Post Cap



4" Elite Post Cap



Contemporary Post Cap



Contemporary Solar  
Post Cap



6" Elite Post Cap



4" Heritage Trim Ring



3½" to 6½" 4-Piece  
Trim Ring



5" 2-Piece Trim Ring



4½" Paintable Round  
Column Adapters

# SELECT SERIES™ VINYL RAILING

Engineered with many features that are found in more expensive professional products, Select Series Vinyl Railing is a high-quality, budget-conscious choice that is easy to install and maintain. Featuring brackets that conceal hardware and with available upgrades like LED lighting, Select Series provides a simple, yet sophisticated railing option.





## PRODUCT BENEFITS

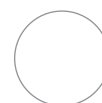
- Aluminum stiffeners reinforce rails for added strength and support
- 6', 8' and 10' level rail kit lengths
- 6' and 8' stair rail kit lengths
- 36" and 42" level rail heights
- Multiple post options available — 4" x 4", 5" x 5" and 6" x 6"
- Code compliant
- Made in the USA

## HOMEOWNER BENEFITS

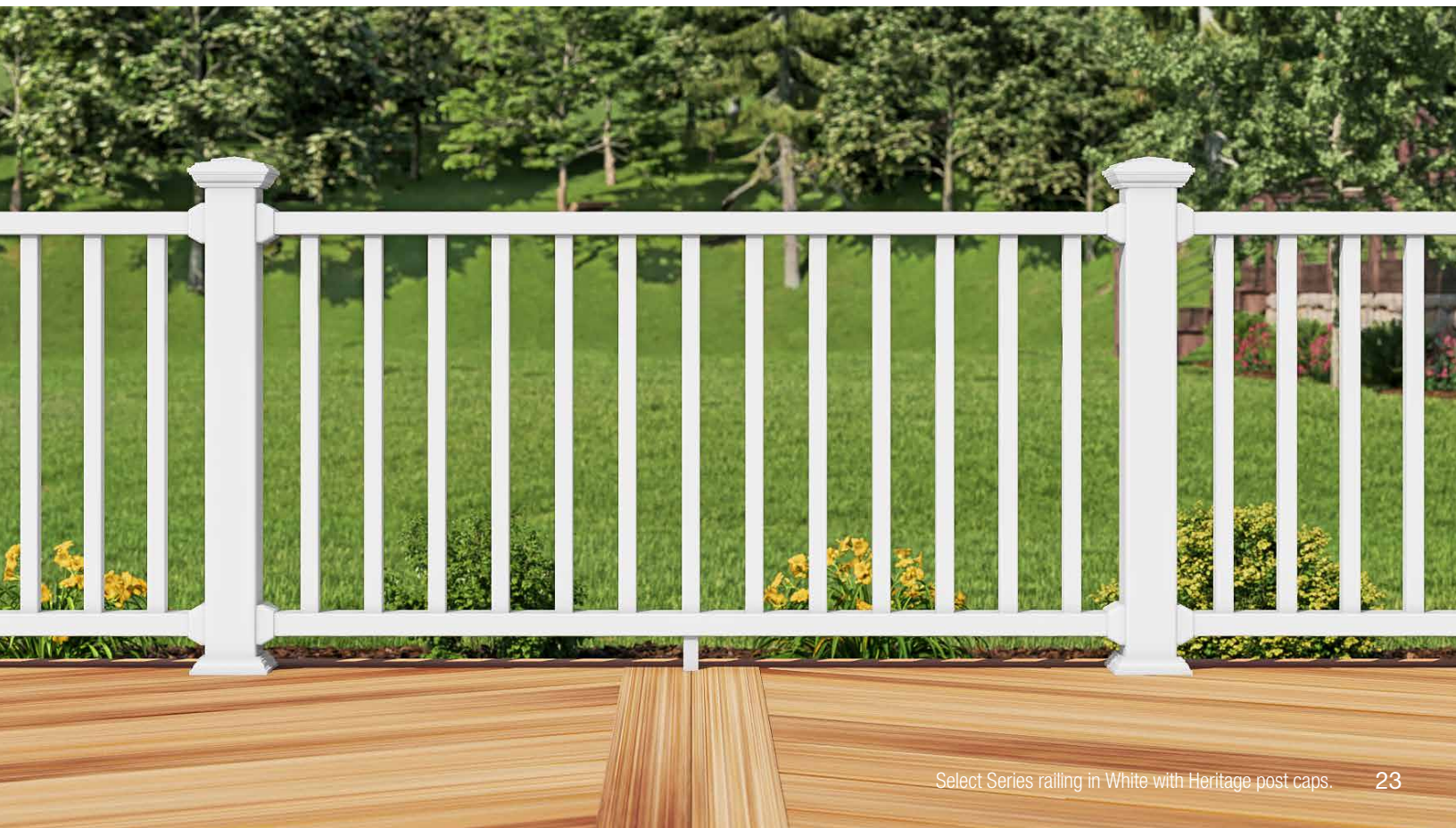
- Does not warp, splinter or rot
- Matching gate kit
- Compatible with LED lighting
- Easy to maintain
- Long lasting color retention
- Transferrable Limited Lifetime Warranty

## DESIGN VERSATILITY

- Bracket design hides unsightly fasteners to provide a clean, finished look
- 1 color



White



# SELECT SERIES™ VINYL RAILING

LEVEL RAIL KITS	
Description	White
Select Series 6' x 36" Rail Kit with Square Balusters	73012418
Select Series 8' x 36" Rail Kit with Square Balusters	73012424
Select Series 10' x 36" Rail Kit with Square Balusters	73012430
Select Series 6' x 42" Rail Kit with Square Balusters	73012436
Select Series 8' x 42" Rail Kit with Square Balusters	73012438
Select Series 10' x 42" Rail Kit with Square Balusters	73012440

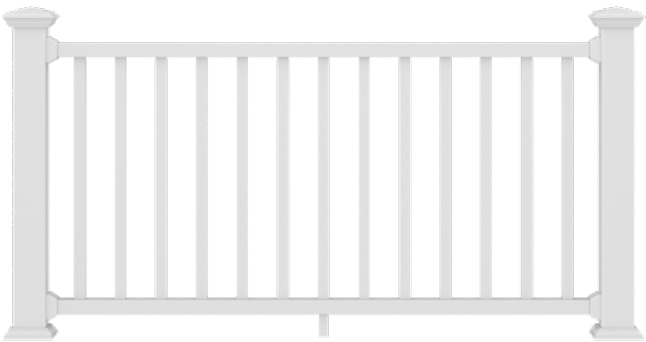
Level rail kits include top and bottom rail, brackets, balusters and support feet.

STAIR RAIL KITS	
Description	White
Select Series 6' x 36" Stair Kit with Square Balusters	73024862
Select Series 8' x 36" Stair Kit with Square Balusters	73024863
Select Series 8' x 42" Stair Kit with Square Balusters	73024865

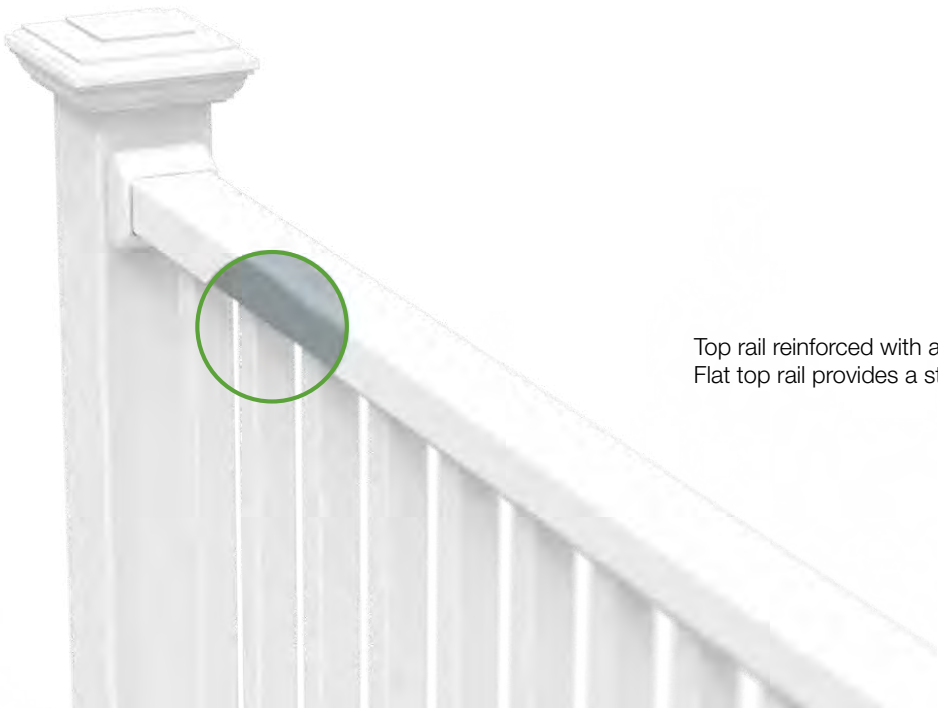
Stair rail kits include top rail with aluminum stiffener, bottom rail, brackets and balusters.

### Dimensions

- 6' length rails (67½" actual size)
- 8' length rails (91½" actual size)
- 10' length rails (115½" actual size)
- 6' length stairs (67½" actual size)
- 8' length stairs (91½" actual size)
- 36" & 42" finished heights (with 3" bottom space)



1⅜" Square Balusters



Top rail reinforced with an aluminum core.  
Flat top rail provides a sturdy surface for drinks.

## BRACKETS\*

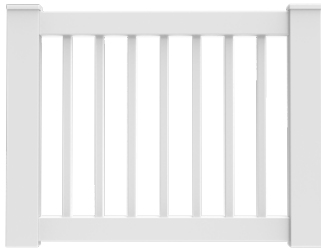
Description	White
Select Series Level Bracket – 4-Piece (2 top and 2 bottom brackets)	<b>73012488</b>
Select Series Stair Bracket – 4-Piece (non-adjustable — 2 top and 2 bottom brackets)	<b>73024867</b>
Select Series Angle Bracket – 4-Piece (adjustable to a level angle of 45 — 2 top and 2 bottom brackets)	<b>73012492</b>

\*Level and Stair brackets are included in all kits; extra brackets are for use when cutting a rail section to create two shorter sections.

## GATE KITS

Description	White
36" Gate Kit (for gates up to 48" wide)	<b>73045025</b>
42" Gate Kit (for gates up to 48" wide)	<b>73045035</b>

Gate kits include top and bottom rails, seven 1¼" square balusters, and two uprights with caps and glue.



Select Series Gate Kits provide safety and containment to your project and can accommodate 36" to 48" wide openings between posts. Hinges and latches sold separately.

## GATE HARDWARE

Description	Black	White
Standard Wrap Hinge Pair	<b>73028117</b>	<b>73025512</b>
Two-Sided Locking Latch	<b>73050187</b>	<b>73050188</b>
Gravity Latch	<b>73002252</b>	<b>73025491</b>

## STRUCTURAL POSTS

Description	36"	42"
Flush Mount Post (includes steel post, post inserts, mounting plate, vinyl shims and hardware)	<b>73019022</b>	<b>73019024</b>
Thru/Fascia Mount Post (includes steel post, post inserts, mounting plate, vinyl shims and hardware)	<b>73019023</b>	<b>73019025</b>



Flush Mount Post



Thru/Fascia Mount Post



## SELECT SERIES™ VINYL RAILING

### VINYL POST SLEEVES & WRAPS

Description	White
4" x 4" x 39" Traditional Post Sleeve (unit pack of 84)	<b>61109087</b>
4" x 4" x 39" Traditional Post Sleeve (unit pack of 22)	<b>73019260</b>
4" x 4" x 45" Traditional Post Sleeve	<b>61109088</b>
4" x 4" x 100" Traditional Post Sleeve	<b>73012479</b>
4" x 4" x 108" Traditional Post Sleeve	<b>61109090</b>
4" x 4" x 96" 4-Piece Post Wrap	<b>73018473</b>
4" x 4" x 120" 4-Piece Post Wrap	<b>73018007</b>
5" x 5" x 39" Traditional Post Sleeve	<b>73043921</b>
5" x 5" x 45" Traditional Post Sleeve	<b>73043922</b>
5" x 5" x 108" Traditional Post Sleeve	<b>73043923</b>
Post Inserts (for use with 5" sleeves on structural or wood 4" x 4" posts)	<b>73019139</b>
6" x 6" x 54" Post Sleeve	<b>73018734</b>
6" x 6" x 108" Post Sleeve	<b>73018731</b>
6" x 6" x 96" 4-Piece Post Wrap	<b>73018478</b>
6" x 6" x 120" 4-Piece Post Wrap	<b>73018008</b>

4" x 4" Post Wraps work on posts  $3\frac{3}{8}" - 4\frac{1}{8}"$ .

6" x 6" Post Wraps work on posts  $5\frac{7}{16}" - 6\frac{1}{8}"$ .



Traditional Post Sleeve  
(4", 5" or 6" options)



4-Piece Post Wrap

### VINYL PORCH POSTS

Description	White
4" x 4" x 108" Square Porch Post (2,500 lbs.)*	<b>73018767</b>
4" x 4" x 108" Turned Porch Post (2,500 lbs.)*	<b>73018752</b>
5" x 5" x 108" Turned Porch Post (5,000 lbs.)*	<b>73018010</b>
5" x 5" x 108" Square Porch Post (5,000 lbs.)*	<b>73018769</b>
5" x 5" x 108" Premiere Square Porch Post (4,500 lbs.) (Includes Base Mounting Kit)	<b>73047642</b>
5" x 5" x 108" Premiere Turned Porch Post (4,500 lbs.) (Includes Base Mounting Kit)	<b>73047641</b>

\*Requires Base Mounting Kit (sold separately).



Square Porch Post



Premiere Square Porch Post



Turned Porch Post

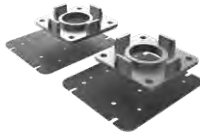


Premiere Turned Porch Post

## MOUNTING KITS FOR PORCH POSTS

Description	4" x 4"	5" x 5"
Standard Base Mounting Kit	<b>73018005</b>	<b>73018006</b>
Wind Uplift Base Mounting Kit (prevents wind uplift of up to 2,800 lbs.)	<b>73018089</b>	<b>73018090</b>

Base Mounting Kit includes top and bottom mounting plates.



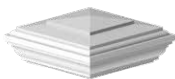
Standard Base  
Mounting Kit



Wind Uplift Base  
Mounting Kit

## POST ACCESSORIES

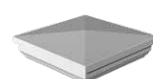
Description	White
4" x 4" Heritage Cap	<b>73012500</b>
4" x 4" Flat Post Cap	<b>73018076</b>
4" x 4" Elite Post Cap	<b>73018073</b>
4" x 4" New England Post Cap	<b>73044950</b>
4" x 4" Contemporary Post Cap	<b>73019233</b>
4" x 4" Contemporary Solar Cap	<b>73019234</b>
5" x 5" New England Post Cap	<b>73045003</b>
5" x 5" Flat Post Cap	<b>73003093</b>
6" x 6" Elite Post Cap	<b>73018105</b>
6" x 6" New England Post Cap	<b>73018108</b>
5" x 5" Contemporary Post Cap	<b>73013124</b>
5" x 5" Contemporary Solar Post Cap	<b>73013110</b>
4" x 4" Heritage Trim Ring	<b>73012503</b>
3½" to 6½" 4-Piece Trim Ring	<b>73018131</b>
5" x 5" 2-Piece Trim Ring	<b>73043929</b>
4½" Paintable Round Column Adapters (2 pieces for 8" columns)	<b>73019453</b>



Heritage Post Cap



Flat Post Cap



New England Post Cap



4" Elite Post Cap



Contemporary Post Cap



Contemporary Solar  
Post Cap



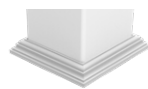
6" Elite Post Cap



4" Heritage Trim Ring



3½" to 6½" 4-Piece  
Trim Ring



5" 2-Piece Trim Ring



4½" Paintable Round  
Column Adapters

# VINYL ADA HANDRAIL

Vinyl ADA Handrail is a code compliant graspable handrail that provides added safety and security to stairs and ramps. Featuring versatile components and metal-to-metal connections for maximum strength, this system can be joined in many different configurations.





## PRODUCT BENEFITS

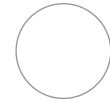
- Metal-to-metal connections for maximum strength
- Versatile components that can accommodate angles up to 90°
- Code compliant

## HOMEOWNER BENEFITS

- Easy to maintain
- Transferrable Limited Lifetime Warranty

## DESIGN VERSATILITY

- Available in 2 colors



White

**NEW!**



Clay



## SOLARGUARD®

SolarGuard® is a material composition that provides fade resistance\* so that your outdoor living products will look good for years to come.

\*Does not apply to white vinyl products



# VINYL ADA HANDRAIL

VINYL ADA HANDRAIL - LINEALS		
Description	White	Clay
120" Vinyl Clad Aluminum Handrail	73018380	73018808
104" Vinyl Clad Aluminum Handrail	73018377	73018806
80" Vinyl Clad Aluminum Handrail	73018381	73018810
180° Return Loop	73018392	73018818



Vinyl Clad Aluminum Handrail



180° Return Loop

VINYL ADA HANDRAIL - MOUNTING BRACKETS		
Description	White	Clay
Mounting Bracket	73018384	73018812
Inside Corner Mounting Bracket	73018394	73018820
90° Post Return	73018398	73018824
Straight Wall Return	73018402	73018826

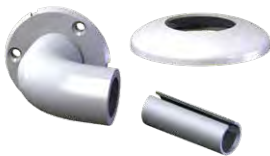
A mounting bracket is required every 6' of Handrail lineal. Hardware to attach mounting brackets to lineals included; hardware to attach to posts not included.



Mounting Bracket



Inside Corner Mounting Bracket



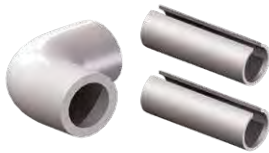
90° Post Return



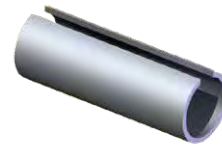
Straight Wall Return

## VINYL ADA HANDRAIL - JOINERS

Description	White	Clay
90° Corner	<b>73018386</b>	<b>73018814</b>
Internal Adjustable Joiner (no color)	<b>73018382</b>	
Internal Straight Joiner (no color)	<b>73018399</b>	



90° Corner

Internal Adjustable  
JoinerInternal Straight  
Joiner

## VINYL ADA HANDRAIL - ACCESSORIES

Description	White	Clay
Joint Ring	<b>73018396</b>	<b>73018822</b>
End Cap	<b>73018390</b>	<b>73018816</b>



Joint Ring



End Cap



# ALUMINUM ADA HANDRAIL

Aluminum ADA Handrail is the perfect solution for applications where durable, low-maintenance, graspable metal handrail is desired. Strong, metal-to-metal connections ensure dependable safety and security for any stair or ramp that requires ADA code compliance.



## PRODUCT BENEFITS

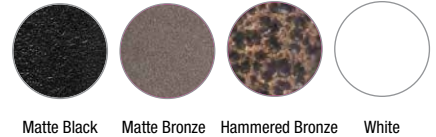
- Metal-to-metal connections for maximum strength
- Versatile components that can accommodate angles up to 90°
- Code compliant

## HOMEOWNER BENEFITS

- Premium powder coating meets and exceeds AAMA 2604 specifications
- Advanced weather testing, including 10,000 hours of salt spray testing
- Easy to maintain
- Transferrable Limited Lifetime Warranty

## DESIGN VERSATILITY

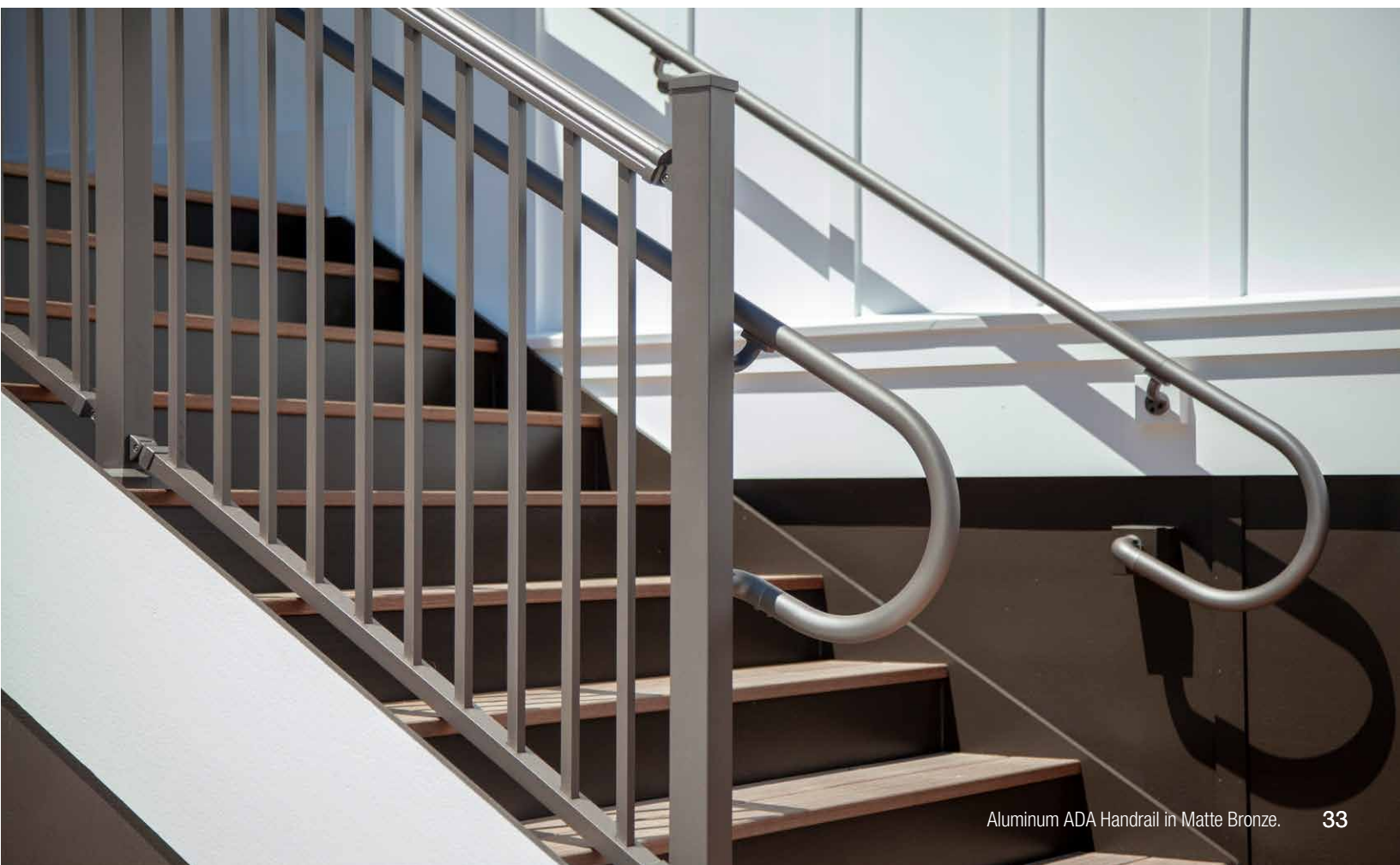
- Powder coated colors match and complement both VersaRail Aluminum Railing and Concord Steel Railing
- Available in 4 colors



## SOLARGUARD®

SolarGuard® is a material composition that provides fade resistance\* so that your outdoor living products will look good for years to come.

\*Does not apply to white vinyl products



# ALUMINUM ADA HANDRAIL

ALUMINUM ADA HANDRAIL – LINEALS				
Description	White	Matte Black	Hammered Bronze	Matte Bronze
1½" x 80" Aluminum Lineal	73019171	73019169	73019170	73041311
1½" x 104" Aluminum Lineal	73019175	73019173	73019174	73041309
1½" x 120" Aluminum Lineal	73019179	73019177	73019178	73041310
180° Return Loop	73019227	73019229	N/A	73041325



Aluminum Handrail



180° Return Loop

ALUMINUM ADA HANDRAIL – MOUNTING BRACKETS				
Description	White	Matte Black	Hammered Bronze	Matte Bronze
Mounting Bracket	73019151	73019149	73019150	73041323
Mounting Bracket for Vinyl Posts	N/A	73042847	N/A	N/A
Inside Corner Mounting Bracket	73041318	73041317	N/A	73041315
90° Post Return	73019147	73019145	73019146	73041324
90° Post Return for Vinyl Posts	N/A	73042848	N/A	N/A
Straight Wall Return	73019155	73019153	73019154	73041326

A mounting bracket is required every 6' of Handrail lineal. Hardware to attach mounting brackets to steel or aluminum posts included and hardware for vinyl posts included in brackets indicating use for vinyl posts.



Mounting Bracket



Mounting Bracket  
for Vinyl Posts



Inside Corner  
Mounting Bracket



90° Post Return



90° Post Return for  
Vinyl Posts



Straight Wall Return



## ALUMINUM ADA HANDRAIL – JOINERS

Description	White	Matte Black	Hammered Bronze	Matte Bronze
External Adjustable Joiner	<b>73019167</b>	<b>73019165</b>	<b>73019166</b>	<b>73041314</b>
Internal Straight Joiner (no color)	<b>73018399</b>			
90° Corner	<b>73019163</b>	<b>73019161</b>	<b>73019162</b>	<b>73041312</b>



External Adjustable  
Joiner



Internal Straight  
Joiner



90° Corner

## ALUMINUM ADA HANDRAIL – ACCESSORIES

Description	White	Matte Black	Hammered Bronze	Matte Bronze
End Cap	<b>73019159</b>	<b>73019157</b>	<b>73019158</b>	<b>73041313</b>
Joint Ring	<b>73041322</b>	<b>73041321</b>	<b>N/A</b>	<b>73041319</b>
Spacer Block	<b>73041469</b>	<b>73042849</b>	<b>N/A</b>	<b>73043094</b>



End Cap



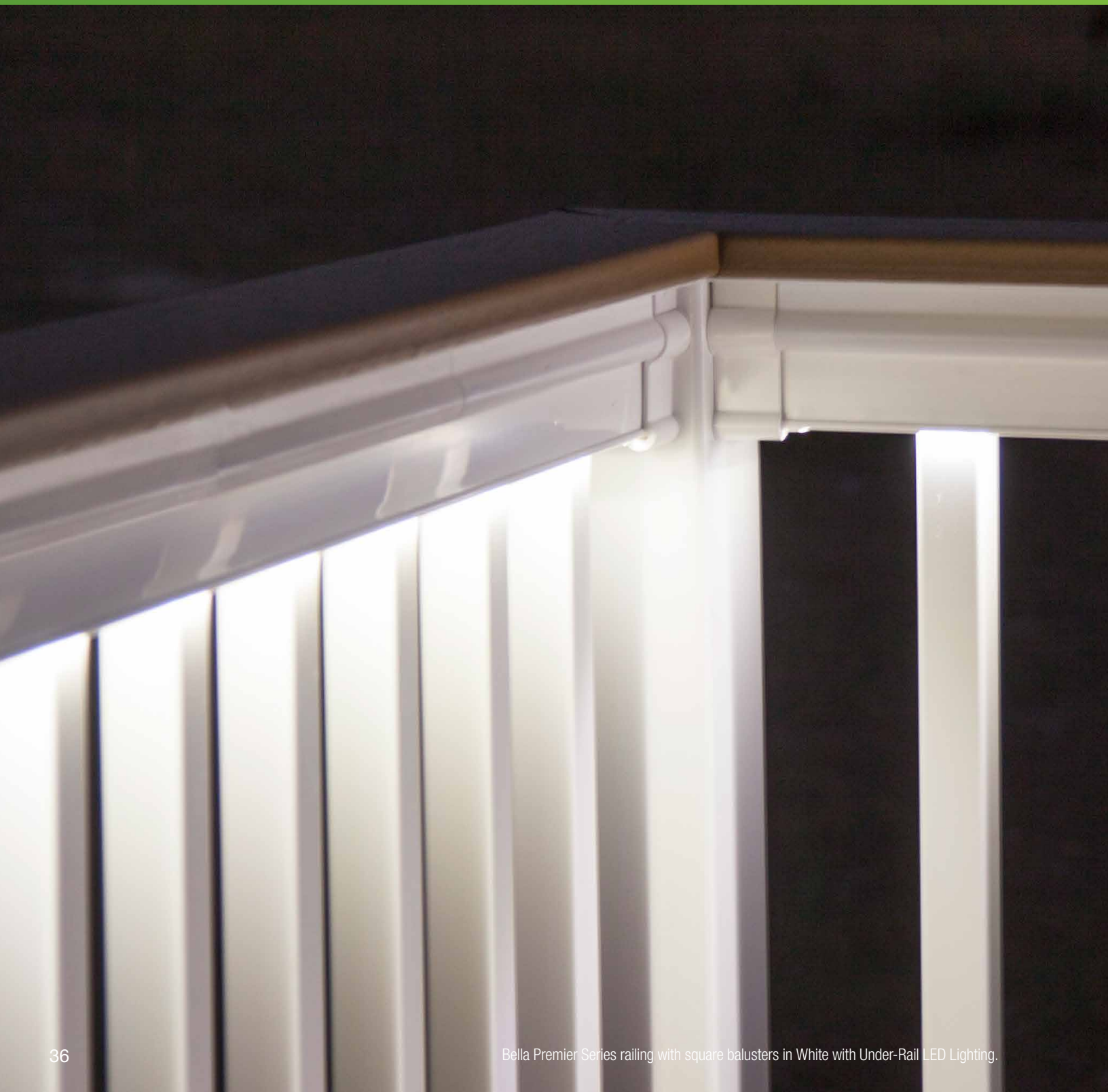
Joint Ring



Spacer Block

# LIGHTING

Solar Post Caps and a full LED Lighting system are available for use with all Barrette Outdoor Living vinyl, aluminum and steel railing products. Under-rail LED lighting strips feature an adhesive backing and easily connect with a 50W Bluetooth compatible transformer. Additional LED accessories include post caps, dome lights, flush deck and side/stair lights.



## PRODUCT BENEFITS

- LED plug-and-play lighting system does not require cutting or splicing of wires
- Under-rail light channel available for certain railing styles
- 2- and 5-way splitters and additional lighting wire available

## HOMEOWNER BENEFITS

- Long-lasting, true white LED lights — rated at 50,000 hours
- Adjust and control lighting with smartphone\*
- Limited Warranty

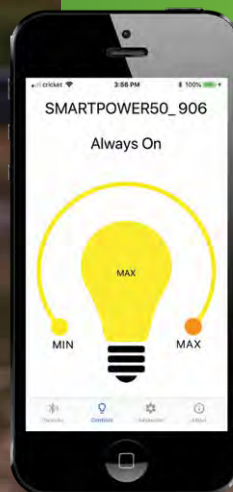
*\*available only with transformer*

## DESIGN VERSATILITY

- Post cap and/or under-rail LED lighting options
- Color matched post caps available for most railing styles
- Solar post caps with down lighting available for dramatic lighting effect

## Product Spotlight

Bluetooth compatible transformer for LED lighting can be controlled on your smartphone!





## ALUMINUM RAIL – LIGHTED ACCESSORIES

Description	White	Matte Black	Matte Bronze
2½" 3-in-1 LED Light Post Cap (1.6W)	<b>73021946</b>	<b>73021947</b>	<b>73021948</b>
2½" Solar Light Post Cap	<b>73044955</b>	<b>73044954</b>	<b>73044941</b>
2½" Solar Down Light Post Cap	<b>73044936</b>	<b>73044935</b>	<b>73044953</b>
4¼" Solar Light Post Cap	<b>73050527</b>	<b>73050526</b>	<b>73050528</b>
4¼" LED Light Post Cap (0.80W)	<b>73050524</b>	<b>73050523</b>	<b>73050525</b>
92" Under-Rail LED Lighting (3W for 92" length)	<b>73019376</b>		
Flush Deck Light (0.40W)	<b>73019403</b>		



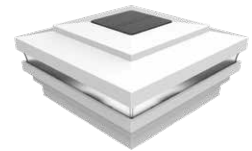
3-in-1 LED Light Post Cap



Solar Light Post Cap



Solar Down Light Post Cap



4¼" Solar Light Post Cap



4¼" LED Light Post Cap



92" Under-Rail LED Lighting (3W)



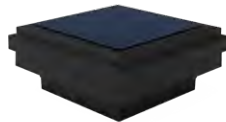
Flush Deck Light (0.40W)

## STEEL RAIL – LIGHTED ACCESSORIES

Description	Matte Black
2" LED Post Cap (0.80W)	<b>73043000</b>
3" LED Post Cap (0.80W)	<b>73043001</b>
2" Solar Down Light Post Cap	<b>73044933</b>
3" Solar Down Light Post Cap	<b>73044934</b>
Flush Deck Light (0.40W)	<b>73019403</b>



LED Lighted Post Cap (2" or 3")



Solar Down Light Post Cap (2" or 3")



Flush Deck Light (0.40W)

## VINYL RAIL – LIGHTED ACCESSORIES

Description	White	Clay
4" x 4" Contemporary Solar Post Cap	<b>73019234</b>	<b>73045510</b>
4" x 4" Contemporary LED Post Cap (0.80W)	<b>73019377</b>	<b>73045506</b>
5" x 5" New England LED Post Cap (0.80W)	<b>73043928</b>	<b>N/A</b>
5" x 5" Contemporary Solar Post Cap	<b>73013110</b>	<b>N/A</b>
Dome Light (0.80W)	<b>73019404</b>	<b>73045508</b>
Stair/Side Light (0.40W)	<b>73019411</b>	<b>N/A</b>
92" Under-Rail LED Lighting (3W for 92" length)	<b>73019376</b>	
Flush Deck Light (0.40W)	<b>73019403</b>	



Contemporary  
Post Cap (Solar or LED)



New England LED  
Post Cap (0.80W)



Dome Light (0.80W)



Side/Stair Light (0.40W)



92" Under-Rail LED Lighting  
(3W)



Flush Deck Light (0.40W)

## LED LIGHTING – COMPONENTS

Description	SKU
Bluetooth Transformer for LED Lighting System	<b>73041277</b>
2-Way Splitter	<b>73019370</b>
5-Way Splitter	<b>73019371</b>
2' Electrical Lighting Wire	<b>73032449</b>
5' Electrical Lighting Wire	<b>73019375</b>
7' Electrical Lighting Wire	<b>73019373</b>
9' Electrical Lighting Wire	<b>73019374</b>
92" Under-Rail Light Channel (10 pack for use with Select Series Vinyl Railing) — WHITE	<b>73024866</b>

Transformer is 50W. Includes photocell, built-in dimmer, timer, and remote. Transformer is Bluetooth capable; "SmartPower50" app available from the App Store and Google Play.



Transformer (50W)  
with Bluetooth capability



2-Way Splitter



Lighting Wire – available  
in 2', 5', 7' or 9' lengths.



5-Way Splitter



Under-Rail Light Channel  
(92" length)

# DECORATIVE SCREEN PANELS

Decorative Screen Panels offer a unique and attractive way to customize an indoor or outdoor setting. Allowing for creativity with privacy screening, Decorative Screen Panels are the perfect home accent to enhance a room, patio, garden or a stylish solution for under a deck. Panels can also be installed up to three high in our aluminum frame kit — creating a divider screen for increased privacy wherever it is needed.





## PRODUCT BENEFITS

- Low-maintenance, impact resistant material ensures stability in extreme climates
- Select designs feature a dimensional effect for added realism
- Made in the USA

## HOMEOWNER BENEFITS

- Resists warping, rot, twisting, splitting, discoloration and scratching
- Limited Lifetime Warranty

## DESIGN VERSATILITY

- Available in 8 designs and 2 sizes
- Paintable
- Wide variety of color options



Black



Gray



White



Brazilian Walnut



Umber



Saddle

## Product Spotlight

8' x 8' Pergola Kit incorporates Decorative Screen Panels — providing privacy and shade.



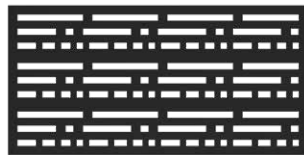
## DECORATIVE SCREEN PANELS

2' X 4' DECORATIVE SCREEN PANELS				
Description	Boardwalk	Morse	Fretwork	Sprig
2' x 4' x 0.3" – White	73042821	73004795	73004785	73004790
2' x 4' x 0.3" – Gray	73050384	73050383	73050381	73050382
2' x 4' x 0.3" – Saddle	73042824	73004798	73004788	73004793
2' x 4' x 0.3" – Brazilian Walnut	N/A	N/A	N/A	73004687
2' x 4' x 0.3" – Black	73042822	73004796	73004786	73004791
Description	Sanibel		Slate	
2' x 4' x 0.3" – Umber	73050359		N/A	
2' x 4' x 0.3" – Black	73050358		73050082	

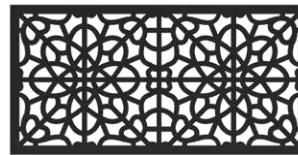
Actual size: 23.88" x 47.88" x 0.3".



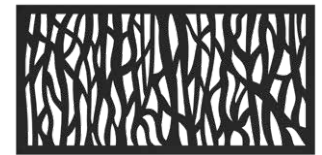
Boardwalk  
US Des. Pat. No. D889,142



Morse  
US Des. Pat. No. D843,607



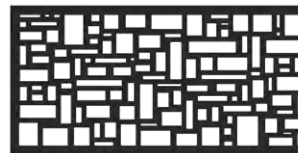
Fretwork  
US Des. Pat. No. D843,608



Sprig  
US Des. Pat. No. D843,605



Sanibel  
Design Patent Pending



Slate

3' X 6' DECORATIVE SCREEN PANELS				
Description	Boardwalk	Sanibel	River Rock	Optic
3' x 6' x 0.3" – White	73045664	N/A	73045668	N/A
3' x 6' x 0.3" – Gray	73045665	N/A	73045669	N/A
3' x 6' x 0.3" – Saddle	73045666	N/A	N/A	N/A
3' x 6' x 0.3" – Black	73030561	73050460	73045667	73050083

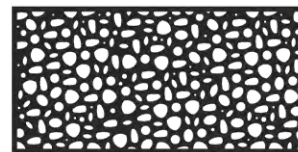
Actual size: 36" x 68" x 0.3".



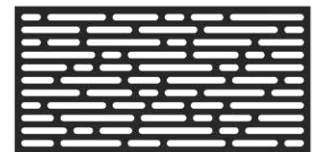
Boardwalk



Sanibel  
Design Patent Pending



River Rock



Optic

Decorative Screen Panels are designed with a matte, textured finish to allow them to be painted for complete customization.

DECORATIVE SCREEN PANEL HARDWARE	
Description	
Fastener Kit (12 stainless steel screws and 12 color matched screw covers) – White	73025526
Fastener Kit (12 stainless steel screws and 12 color matched screw covers) – Gray	73050385
Fastener Kit (12 stainless steel screws and 12 color matched screw covers) – Saddle	73025529
Fastener Kit (12 stainless steel screws and 12 color matched screw covers) – Brazilian Walnut	73004820
Fastener Kit (12 stainless steel screws and 12 color matched screw covers) – Umber	73050380
Fastener Kit (12 stainless steel screws and 12 color matched screw covers) – Black	73025527

## DECORATIVE SCREEN PANEL FRAME KIT

Description	Matte Black
2' x 4' Horizontal Frame Kit (holds up to three 2' x 4' Decorative Screen Panels — sold separately)	<b>73050431</b>
2' x 4' Line Post Kit (use with Frame Kit to create a continuous section)	<b>73050432</b>
2' x 4' Corner Post Kit (use with Frame Kit to create a corner section)	<b>73050433</b>
3' x 6' Horizontal Frame Kit (holds up to two 3' x 6' Decorative Screen Panels — sold separately)	<b>73050434</b>
3' x 6' Vertical Frame Kit (holds one 3' x 6' Decorative Screen Panel — sold separately)	<b>73050437</b>
3' x 6' Line Post Kit (use with Horizontal or Vertical Frame Kit to create a continuous section)	<b>73050435</b>
3' x 6' Corner Post Kit (use with Horizontal or Vertical Frame Kit to create a corner section)	<b>73050436</b>

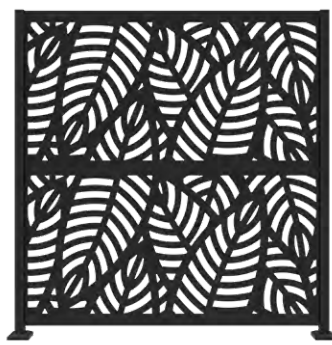
2' x 4' Decorative Screen Panel Frame Kits contain two 2" aluminum end posts, two top/bottom U-channels, two mid H-channels, surface mounting kit, post caps and hardware.

3' x 6' Decorative Screen Panel Frame Kits contain two 2" aluminum end posts, two top/bottom U-channels, one mid H-channel, surface mounting kit, post caps and hardware.

Line and Corner Post Kits contain one 2" aluminum post (for either line or corner orientation), two top/bottom U-channels, two mid H-channels (1 for a 3' x 6'), surface mounting kit, post cap and hardware.



2' x 4' Frame Kit  
(Decorative Screen  
Panels sold separately)



3' x 6' Horizontal Frame Kit  
(Decorative Screen Panels  
sold separately)



3' x 6' Vertical Frame Kit  
(Decorative Screen  
Panels sold separately)



Line Post Kit



Corner Post Kit

## PERGOLA

Description	Matte Black
8' x 8' Pergola – Uses eight 2' x 4' Decorative Screen Panels (sold separately)	<b>73050386</b>
Pergola Side Wall Add-on – Uses four 2' x 4' Decorative Screen Panels (sold separately)	<b>73050387</b>



8' x 8' Pergola  
(Decorative Screen Panels  
sold separately)



Side Wall Add-on  
(Shown with Pergola. Pergola and  
Decorative Screen Panels sold separately)



# LATTICE

Lattice panels are the perfect way to add privacy and conceal unsightly outdoor areas. Easy to maintain and install, durable plastic lattice is resistant to termites and other wood-eating pests. Lattice maintains its classic look without the need for sanding, staining or painting. Available in classic diamond, privacy diamond and privacy square patterns.





## PRODUCT BENEFITS

- Low-maintenance
- Impact resistant plastic
- Matching screws, cap molding and divider molding available
- Made in the USA

## HOMEOWNER BENEFITS

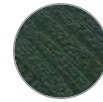
- Resists warping and twisting
- Limited Lifetime Warranty

## DESIGN VERSATILITY

- Available in 3 patterns
- Wide variety of color options



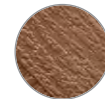
White



Woodland Green



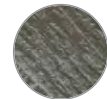
Sierra Cedar



Redwood



Brazilian Walnut



Nantucket Gray



Better Than  
Treated



Black

**NEW!**

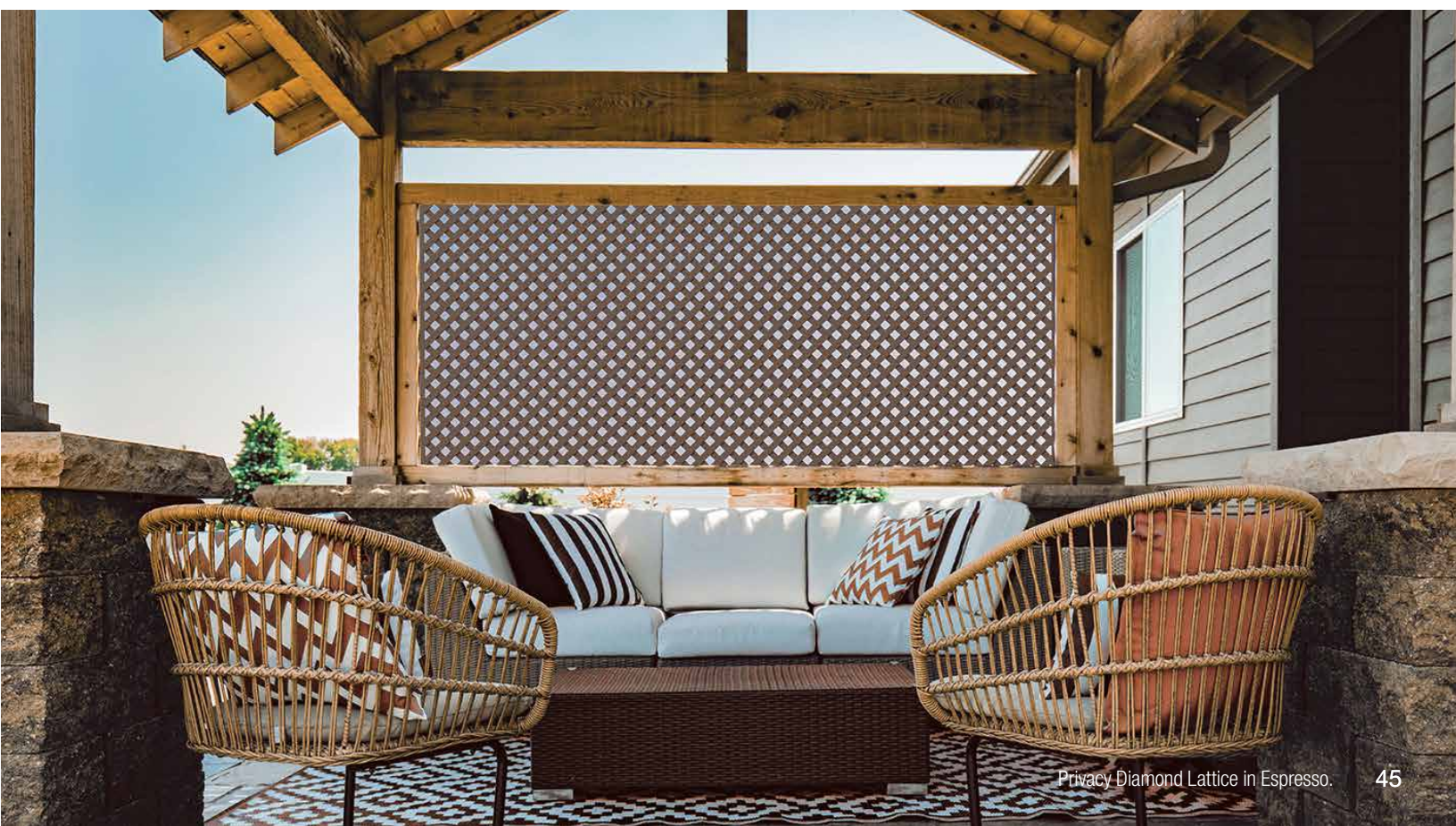


Espresso

**NEW!**

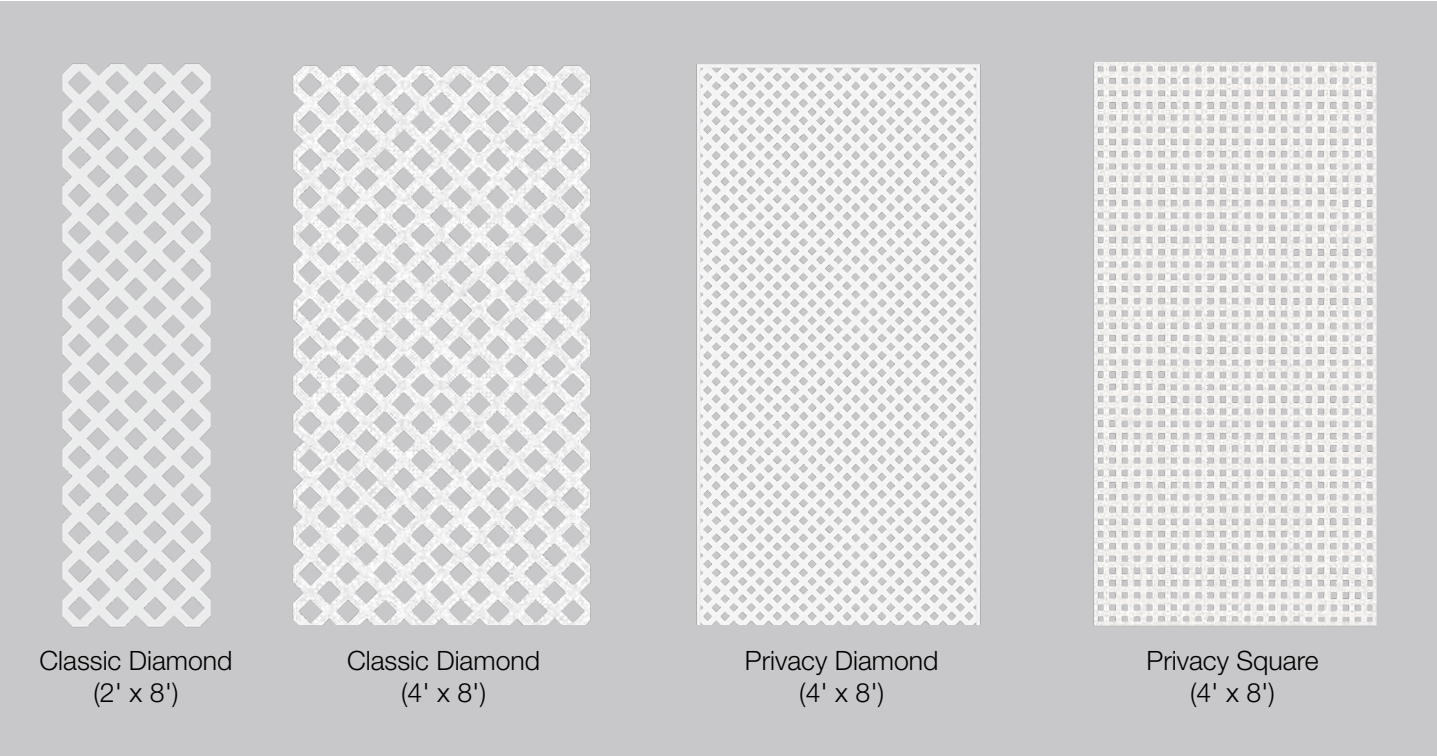


Clay



LATTICE				
Color	Classic Diamond (2' x 8')	Classic Diamond (4' x 8')	Privacy Diamond (4' x 8')	Privacy Square (4' x 8')
White	73004010	73004026	73004042	73004051
Woodland Green	N/A	73004020	73004037	N/A
Sierra Cedar	N/A	73004021	73004038	N/A
Redwood	N/A	73004023	73004040	N/A
Clay	N/A	73054359	73054360	N/A
Brazilian Walnut	N/A	73004144	73004142	N/A
Nantucket Gray	N/A	73004145	73004143	N/A
Better Than Treated	N/A	73004027	73004108	N/A
Black	N/A	73004497	73004479	73053435
Espresso	N/A	73053436	73053437	N/A

Lattice comes in a variety of color options and is NOT intended to be painted.

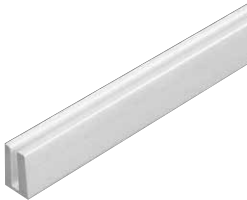




LATTICE ACCESSORIES

Color	Cap Molding	Divider Molding	1½" Color-Matched Screws*
White	73004058	73004066	73003464
Woodland Green	73004057	73004079	73003466
Sierra Cedar	73004059	73004067	73003467
Redwood	73004061	73004069	73003470
Clay	73054361	73054362	73003469
Brazilian Walnut	73004140	73004138	73003999
Nantucket Gray	73004141	73004139	73013281
Better Than Treated	73004064	73004081	73003472
Black	73004496	73004477	73014290
Espresso	73053438	73053439	73053440

\*Color-Matched Screws are stainless steel and come in packs of 12.



Cap Molding



Divider Molding



1½" Color-Matched  
Screws



SCAN ME