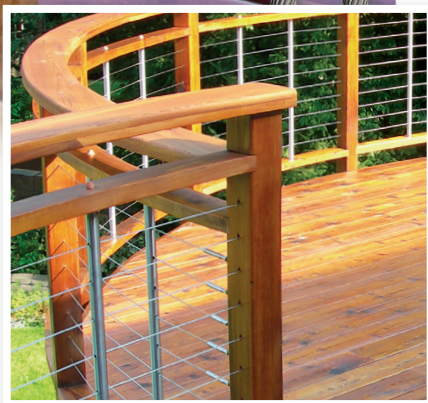


Create cable
assemblies to
fit your style

CABLE·RAIL®
by feeney®



Quick-Connect®
Solutions Guide



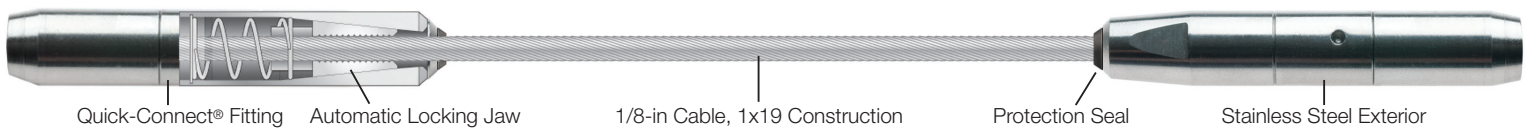
feeney® *makes it easy*

The fast and easy way to create your own CableRail assemblies!

Our *CableRail* Standard Assemblies are an easy to use option for most railing installations, but some projects have construction or design needs that require a different solution. We've taken our patented automatic-locking-jaw technology and applied it to a full range of sleek and swage-less cable end fittings that offer you the opportunity to use CableRail stainless steel cable infill to create virtually any assembly you need.

Quick-Connect® makes it easy

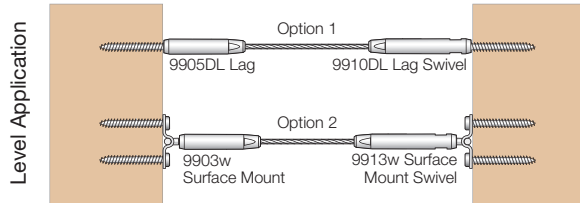
- Versatile - Use Quick-Connect® fittings to attach CableRail to: ■ Post or wall surfaces ■ Angled terminations ■ And more
- Automatic-Locking-Jaw Technology - Just insert the cable into the fitting, and it locks automatically. No cumbersome crimp tools or difficult to use compression fittings.
- Easy Cable Tensioning - Swivel fittings adjust cable tension with just a spin of the compact turnbuckle body.
- Fast and Easy Field Assembly - No need to pre-measure cable lengths.
- Made from high quality 316 marine grade stainless steel for long lasting beauty and easy maintenance.



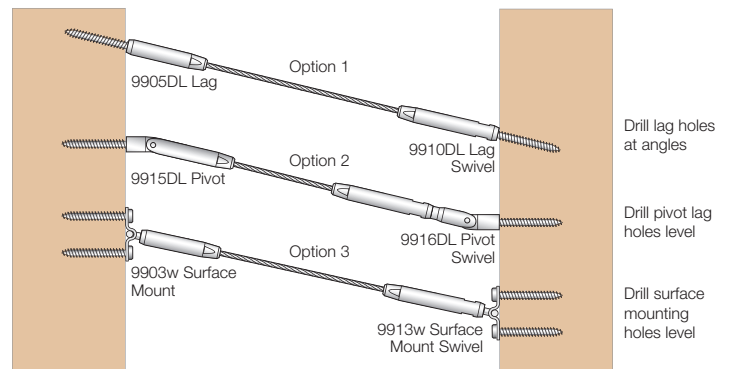
STEP 1 Find Your Solution

A. Wood Posts - Outside to Outside Attachment: **See *CableRail Standard Assemblies brochure***

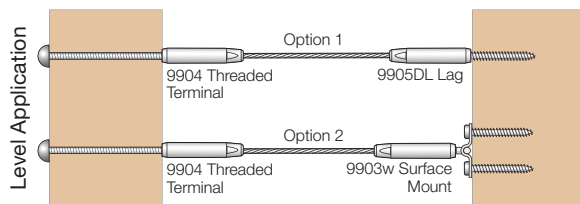
B. Wood Posts - Inside to Inside Attachment



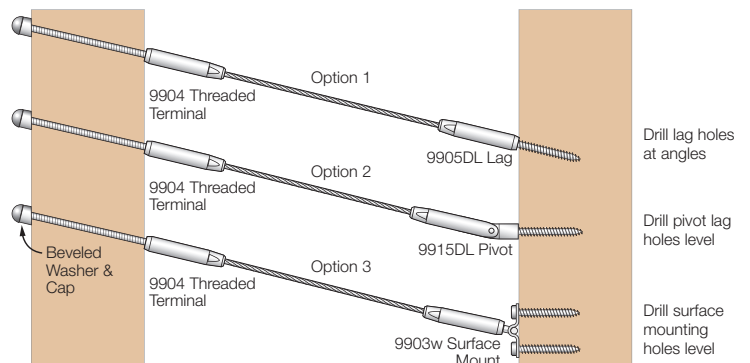
Angled Application



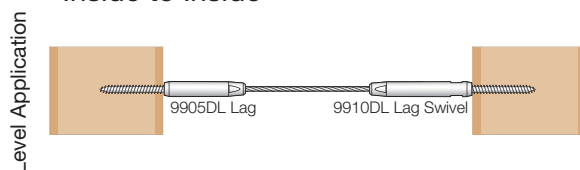
C. Wood Posts - Outside to Inside Attachment



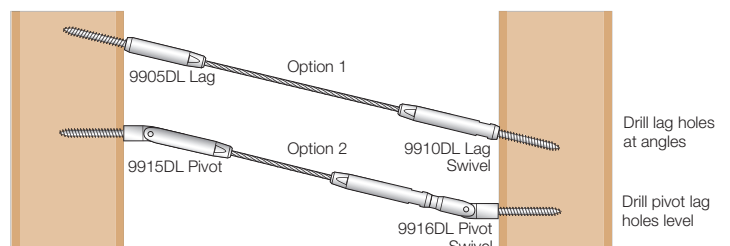
Angled Application



D. Composite Wrapped/Sleeved Wood Posts - Inside to Inside



Angled Application



STEP 2 Select Your Fittings

Fixed Ends are fittings that have no tensioning capabilities. Tension Adjustment Fittings are used to tighten the cable lines. Every cable assembly must be paired with a Tension Adjustment Fitting. For use with 1/8-in diameter CableRail cable only.

Fixed Ends (For 1/8-in CableRail)

QUICK-CONNECT® FIXED LAG

- Screws into the face of a post or wall using a hanger bolt with 1/4-in lag thread (included)
- Typically paired with a QC Lag Swivel Turnbuckle
- Includes 2 Hanger Bolts: One with 2-in of lag thread for wood posts and one with 2-1/2-in of lag thread for wrapped/sleeved wood posts

Part# 9905DL-pkg Take Up 3/4-in



Great for Composite sleeved wood posts!

QUICK-CONNECT® FIXED SURFACE MOUNT

- Attaches to the face of a wall or post (wood screws included)
- 130° pivoting allows for angled stair terminations
- Typically paired with a QC Surface Mount Swivel Turnbuckle

Part# 9903w-pkg



QUICK-CONNECT® PIVOT

- Screws into the face of a post or wall using a hanger bolt with 1/4-in lag thread (included)
- 180° pivoting allows for angled stair terminations
- Typically paired with a QC Pivot Swivel Turnbuckle
- Includes 2 Hanger Bolts: One with 2-in of lag thread for wood posts and one with 2-1/2-in of lag thread for wrapped/sleeved wood posts

Part# 9915DL-pkg



Great for Composite sleeved wood posts!

Tension Adjustment Fittings (For 1/8-in CableRail)

QUICK-CONNECT® LAG SWIVEL TURNBUCKLE

- Screws into the face of a post or wall using a hanger bolt with 1/4-in lag thread (included)
- Tension adjusted by spinning the special swiveling body
- Typically paired with a QC Lag or another QC Lag Swivel Turnbuckle
- Includes 2 Hanger Bolts: One with 2-in of lag thread for wood posts and one with 2-1/2-in of lag thread for wrapped/sleeved wood posts

Part# 9910DL-pkg Take Up 3/4-in



Great for Composite sleeved wood posts!

QUICK-CONNECT® SURFACE MOUNT SWIVEL TURNBUCKLE

- Attaches to the face of a wall or post (wood screws included)
- Tension adjusted by spinning the special swiveling turnbuckle body
- 130° pivoting allows for angled stair terminations
- Typically paired with a QC Fixed Surface Mount or another QC Surface Mount Swivel Turnbuckle

Part# 9913w-pkg Take Up 3/4-in



QUICK-CONNECT® PIVOT SWIVEL TURNBUCKLE

- Screws into the face of a post or wall using a hanger bolt with 1/4-in lag thread (included)
- Tension adjusted by spinning the special swiveling turnbuckle body
- 180° pivoting allows for angled stair terminations
- Typically paired with a QC Pivot or another QC Pivot Swivel Turnbuckle
- Includes 2 Hanger Bolts: One with 2-in of lag thread for wood posts and one with 2-1/2-in of lag thread for wrapped/sleeved wood posts

Part# 9916DL-pkg Take Up 3/4-in

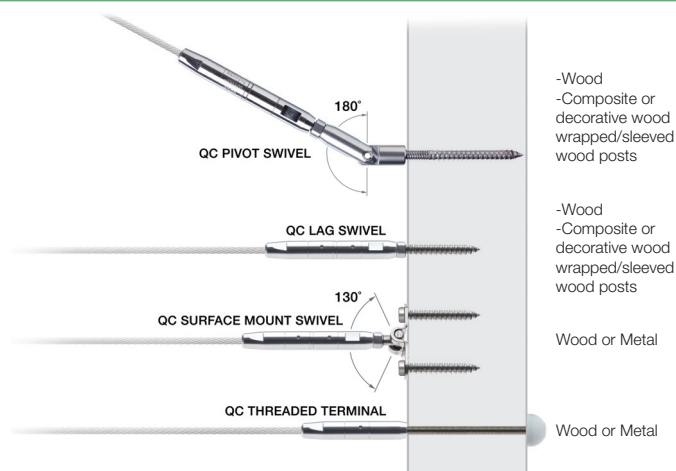
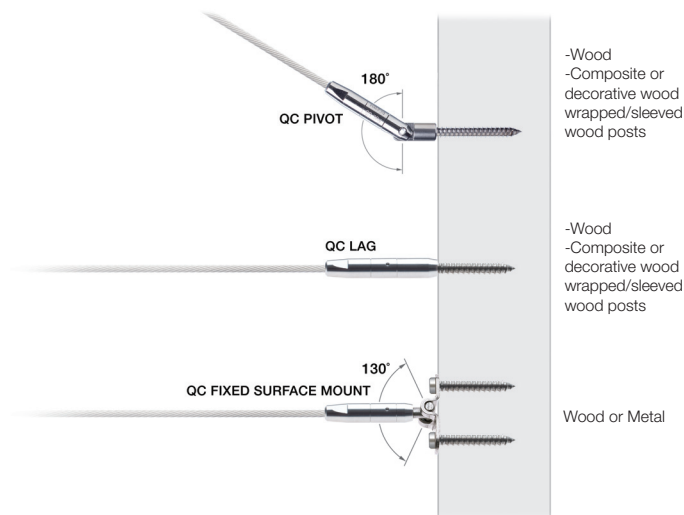


Great for Composite sleeved wood posts!

QUICK-CONNECT® THREADED TERMINAL

- Inserts through a drill hole in the post and is secured and adjusted with a flat washer and washer-nut (included). Trim excess threads and finish with decorative caps (sold separately, see accessories)
- Use beveled washers for angled terminations and flat washers for added bearing surface on wood posts

Part# 9904-pkg Take Up 5-in



STEP 3 Select Your Cable

BULK CABLERAIL CABLE 1/8-in

- For use with all Quick-Connect® fittings

Part#	Cable Length
5100	100-ft
5250	250-ft
5500	500-ft

GENERAL TOOL CHECKLIST

- Safety Glasses
- Work Gloves
- Pencil
- Measuring Tape
- Electric Drill
- Drill Bits
- Hammer
- Cable Cutters or Cut-Off Disk
- Vice-Grip® Pliers
- 7/16-in Wrench
- Electric Grinder & Disk
- Hacksaw
- Cable Lacing Needle
- Quick-Connect® Release Tool
- Hanger Bolt Installation Tool
- Tension Gauge
- 3/8-in Open End Wrenches

STEP 4 Select Your Tools

CABLE CUTTERS

- For shearing excess cable
- Coated handles, hardened jaws

Part#
2972-pkg



CABLE LACING NEEDLE

- For quickly lacing cable ends through posts

Part#
3221-pkg



HANGER BOLT INSTALLATION TOOL

- For easily installing hanger bolts
- Used on pivot fittings

Part#
3988-pkg



QUICK-CONNECT® RELEASE TOOL

- For releasing the cable from the jaws of the QC fitting to remove or adjust the position

Part#
3128-pkg



FEENEY STEELRENEWAL™ + STEELPROTECT™

- For cleaning and protecting CableRail cable and hardware

Part#
5064-pkg

Description
Stainless steel cleaner + protectant combination pack

FEENEY TENSION GAUGE

- Easy to use tool for checking cable tension

Part#
6004-pkg



STEP 5 Select Your Accessories

COLORED END CAPS

- Decorative option for covering and finishing Quick-Connect® Threaded Terminal fittings
- Sold 10 per package

Part#	Color
7071-pkg	Black
7072-pkg	White
7073-pkg	Brown
7074-pkg	Gray
7077-pkg	Bronze



STAINLESS END CAPS

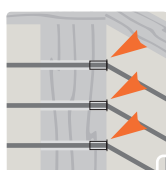
- Decorative option for covering and finishing Quick-Connect® Threaded Terminal fittings
- Sold 4 per package

Part#	Style
3372-pkg	Dome
3373-pkg	Crown
3374-pkg	Chamfer

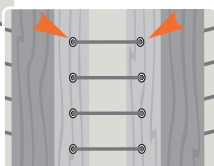
STAINLESS PROTECTOR SLEEVES

- For protecting corner and stairway transition posts from cable abrasion (wood posts only)
- Sold 10 per package

Part#
3210-pkg
(fits 1/4-in diameter holes)



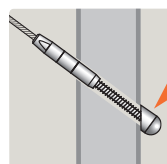
Protector Sleeves prevent abrasion at angled transitions on wood posts (e.g. stair transition posts or outside faces of double corner posts).



STAINLESS BEVELED WASHERS

- For providing a flat bearing surface when attaching fittings at angled stair terminations (for use with Threaded Terminal)
- Sold 4 per package

Part#
3799-pkg



Use Beveled Washers for stair termination posts with angled holes.

FEENEY ALUMINUM INTERMEDIATE PICKETS

- Non-structural pickets for maintaining cable spacings
- Pre-drilled for cables
- Powder coated aluminum, available in Silver, Black and White
- Includes base plates and screws

Part#	Description
7648 SLV-pkg	Level installations; Silver
7649 SLV-pkg	Stair installations; Silver
7648 BLK-pkg	Level installations; Black
7649 BLK-pkg	Stair installations; Black
7648 WHT-pkg	Level installations; White
7649 WHT-pkg	Stair installations; White



Frame Requirements

Frames need to support the tension of properly installed cables.

They need to be designed and built strong enough for the end and corner posts to support a load of approximately 300-lbs for each cable. Here are some basic guidelines to help you prepare your railing frames for cable infill.

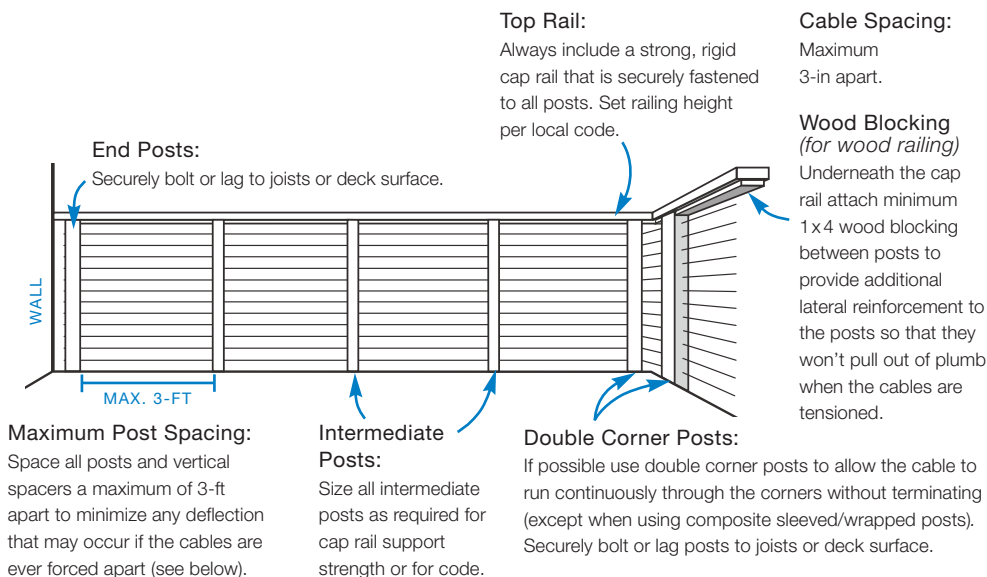
Posts

End and Corner Posts: The end and corner posts are the cable termination/transition posts and support the full load of the taut cables. They should be sized accordingly.

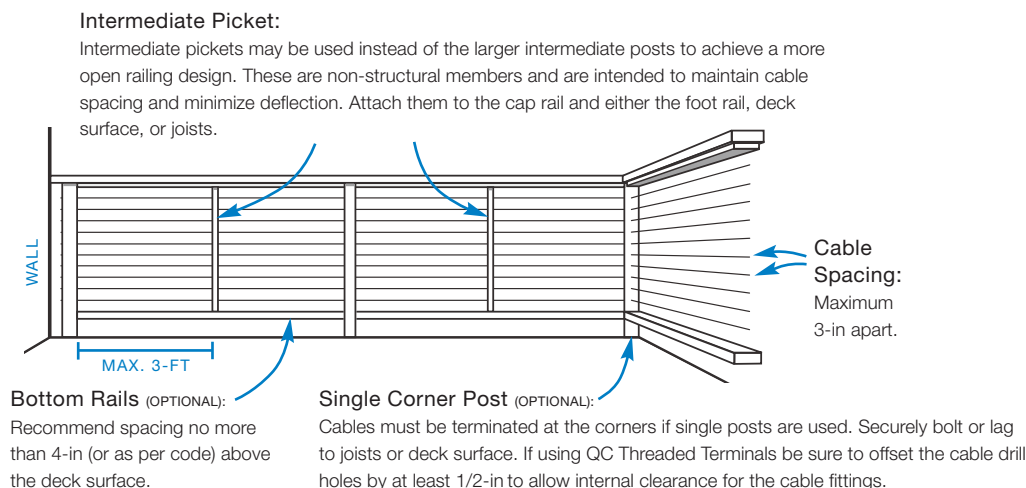
Intermediate Posts: The remaining intermediate posts do not support any tension load since the cables pass straight through, so they can be sized as required for cap rail support or for code.



The Basic Frame Design



And Some Other Options



For complete details on railing frame requirements, please visit www.feeneyinc.com/QCInstall

IMPORTANT NOTES

- Since building codes vary by state, county, and city, following these guidelines may not ensure code compliance in all areas. Please consult with your local building department before starting your cable project.
- CableRail cable assemblies and fittings are designed for use on railings, fences, and trellises only. They should never be used for lifting, hanging, or high load applications.
- Please check with composite material manufacturer and your contractor for recommendations regarding use with CableRail.

CONSTRUCTION CHECKLIST

- Space cables maximum 3-in apart
- Space posts/verticals maximum 3-ft apart
- Securely fasten all posts and cap rails
- Carefully plan all termination and corner posts for proper clearance, positioning, and maximum cable run lengths
- Straight runs of cable (no turns/dips) should not exceed 50-ft
- Runs with corner bends (2 corner bends at most) should not exceed 40-ft
- Use minimum 4x6 size wood for all end and corner posts in wood railings

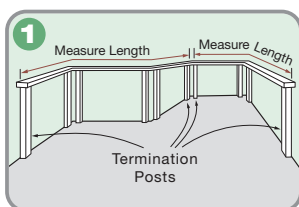
Design Ideas!

DesignRail® Aluminum Rail Kits: These easy-to-use kits come with top and bottom rails, an intermediate picket pre-drilled for CableRail, and the hardware needed to connect the rails to your wood posts. Kits are available for both stair and level railings and are made of high quality aluminum for long lasting beauty with low maintenance.

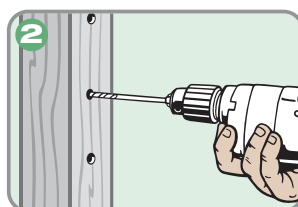
Feeney Intermediate Pickets: Pre-drilled and pre-packaged aluminum intermediate pickets are ready to be installed.



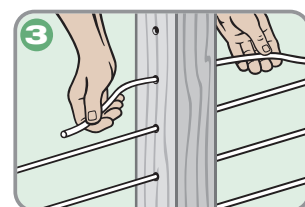
Quick-Connect® Assemblies Are Easy To Install



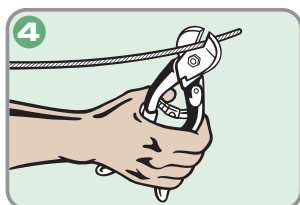
Review your railing frame. Determine which posts or walls will be used for terminating the cable assemblies. Select your cable and fittings.



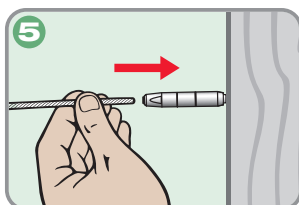
Mark and drill holes in all posts. Hole sizes will vary depending on the size and style of cable fittings used.



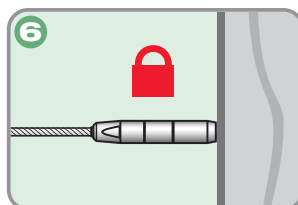
Lace the cable assemblies through your intermediate posts and attach the fittings to the termination posts.



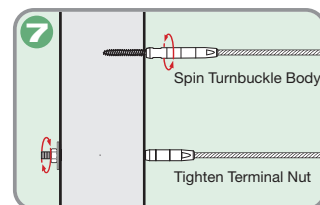
Trim cable to length.



Insert cable into fitting with protection seal in place.



Jaws lock automatically.



Tighten the cables using the Tension Adjustment Fittings. The Feeney Tension Gauge may be used to check cable tension. If using QC Threaded Terminals, trim any excess threads and apply caps to finish the ends.

CABLE ASSEMBLY CARE & MAINTENANCE

The protective chromium oxide film on the surface of stainless steel gives it superior corrosion resistance. Properly maintained stainless steel provides excellent luster, strength, and durability. In most applications stainless steel will not rust or stain even after many years of service, but it is NOT rust or stain proof. When stainless comes in contact with chloride salts, sulfides, or other rusting metals, it can discolor or even rust and corrode. With proper care and maintenance, however, stainless steel can remain beautiful and functional for years to come.

- Clean stainless with soap and warm water. Never clean with mineral acids or bleaches.
- Never use coarse abrasives like sandpaper or steel wool on stainless. Use synthetic Scotch pads instead.
- Never leave stainless in contact with iron, steel, or other metals. This can cause rust spots or corrosion.
- Always remove stains or rust spots as soon as possible with either soap and water or a brass, silver, stainless, or chrome cleaner.
- Periodically inspect cable assemblies for proper tension and re-tension as necessary. **This is important.**
- Protection Seals are pre-inserted into the nose of each fitting to provide added protection against the entry of dirt and dust into the fitting.



Looking for more information, detailed installation instructions, or technical documentation? Please scan the QR code.

AVAILABLE AT:

DETERMINING WHAT YOU'LL NEED

- **Carefully Review:** Read all of the product descriptions, installation instructions, and frame recommendations in this brochure. For additional details, visit www.feeneyinc.com
- **Section Frames:** Divide your railing frame into sections by determining which walls or posts will be the cable termination points. Remember that straight runs should not exceed 50-ft and runs with bends (2 corner bends at most) should not exceed 40-ft.
- **Calculate Quantities:** The number of assemblies depends on your railing design. Please note: each horizontal cable is a separate assembly and cables should not be spaced further than 3-in apart. Calculate the number of fittings, 2 per assembly, including at least 1 tension adjustment fitting, and total cable needed for the project.
- **Check Accessories & Tools:** Count up all the end caps, protector sleeves, beveled washers, cutters, lacing needles, drills, saws, and abrasive disks you may need.
- **Fill Your Order:** Visit your local CableRail dealer and pick up your required items.